



Cycle 3

HA 26A Upper Shannon (Lough Allen) Catchment Report, May 2024

Introduction

Water Quality Summary

High Status Objectives

Water Quality Changes

WFD Risk

Significant Pressures

Action

Summary Information

Introduction

This report provides an overview of the water quality in the Upper Shannon (Lough Allen) Catchment and the pressures impacting on water quality. This report is based on data up to 2021. The latest water quality data, dashboards and maps throughout this report are available on catchments.ie and [EPA Water Map](#).

The Upper Shannon (Lough Allen) Catchment covers an area of 604km² and is characterised by the Brefine upland areas including the karst area of the Geevagh Hills, location of the Arigna Coalfield, the karstic southern slopes of Cuilcagh Mountain and the western flanks of Slieve Anierin (literally The Iron Mountain) and rich in iron ore) which surround the lowland area containing the large source of the River Shannon (Shannon Pot) and Lough Allen.

The Upper Shannon (Lough Allen) Catchment is divided into six subcatchments and has 33 surface water bodies and 18 groundwater bodies.

[View the Upper Shannon \(Lough Allen\) Catchment on the EPA Water Map](#)

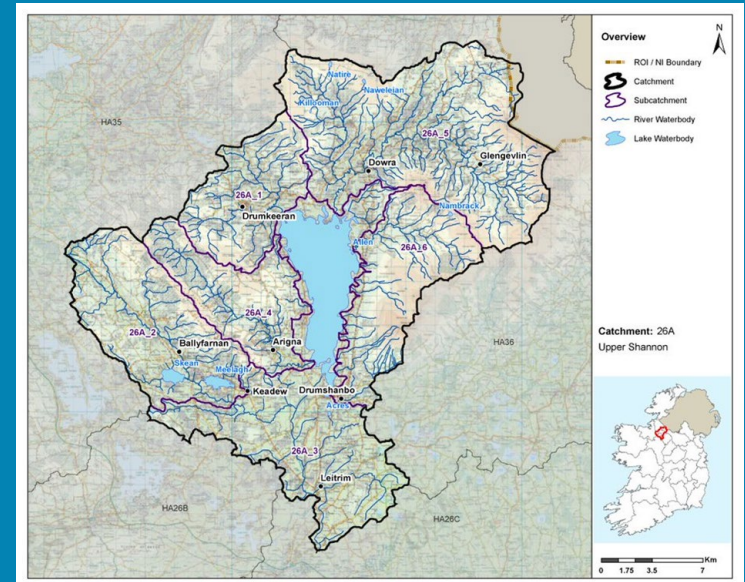
Previous Catchment Assessments

Previous catchment assessments, which provide additional historic context and information, are archived on catchments.ie:

- [Cycle 2 Catchment Assessments – published September 2018](#)
- [Cycle 3 Draft Catchment Assessments – published September 2021](#)

Online Dashboards

Links to online dashboards are provided in this report – these numbers may vary from those in this document as time progresses and the online dashboards are updated based on the latest data and scientific assessments.



Overview of Subcatchments in the Upper Shannon (Lough Allen) Catchment

Water Quality Summary

Introduction

Water Quality Summary

High Status Objectives

Water Quality Changes

WFD Risk

Significant Pressures

Action

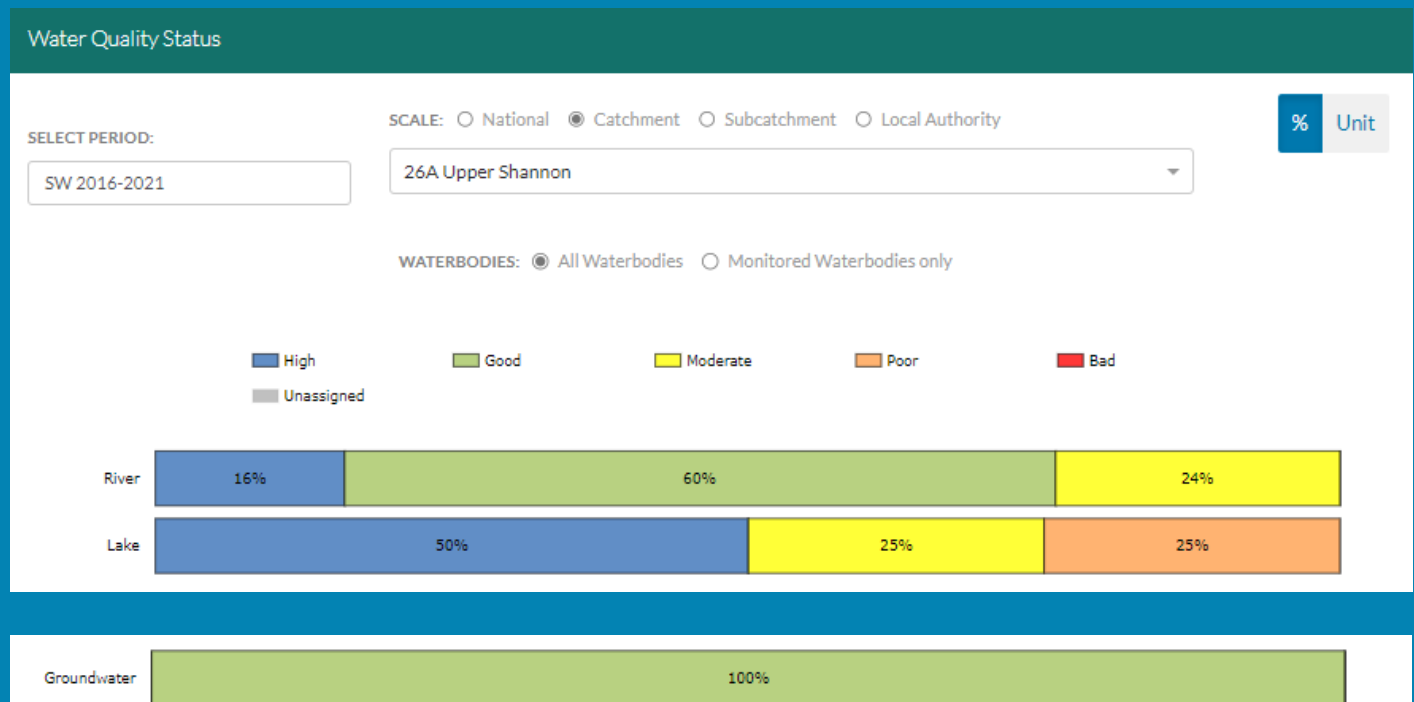
Summary Information

The dashboard below provides a breakdown of water quality status for surface and groundwater bodies in the Upper Shannon (Lough Allen) Catchment.

A total of 70% of surface waterbodies were at Good or High Ecological Status in the 2016-2021 monitoring period. One hundred percent of groundwater bodies were at Good status.

Go to EPA Water Maps for WFD Status

[EPA Water Map](#)



Water quality status 2016-2021 for the Upper Shannon (Lough Allen) Catchment. Note canals are also included under the river category. **View Online Dashboard:** <https://www.catchments.ie/data/#/dashboard/waterquality>

High Status Objective Waterbodies

Introduction

High status waters are prioritised for protection and action.

There are two waterbodies with a **High Ecological Status Objective (HSO)** in the Upper Shannon (Lough Allen) Catchment, with one currently not meeting its environmental objective of High.

Water Quality Summary

Grants for septic tank upgrades may be available in high status objective catchment areas - you can learn more and check your Eircode for eligibility here: <https://www.gov.ie/en/publication/6cc1e-domestic-waste-water-treatment-systems-septic-tanks>

[View HSO river waterbodies in this catchment.](#)

See *Status and Risk / High Status Objective* for other waterbody types.

High Status Objectives

Water Quality Changes

Water Quality Status - High Status Objective Waterbodies

SELECT TYPE: SCALE: Catchment Local Authority

	SW 2007-2009	SW 2010-2012	SW 2010-2015	SW 2013-2018	SW 2016-2021
BELLAVALLY STREAM_010 (River)	High	High	High	High	High
FEORISH (BALLYFARNON)_020 (River)	High	Good	High	Good	Good

WFD Risk

Significant Pressures

Water quality status for High Ecological Status Objective waterbodies.

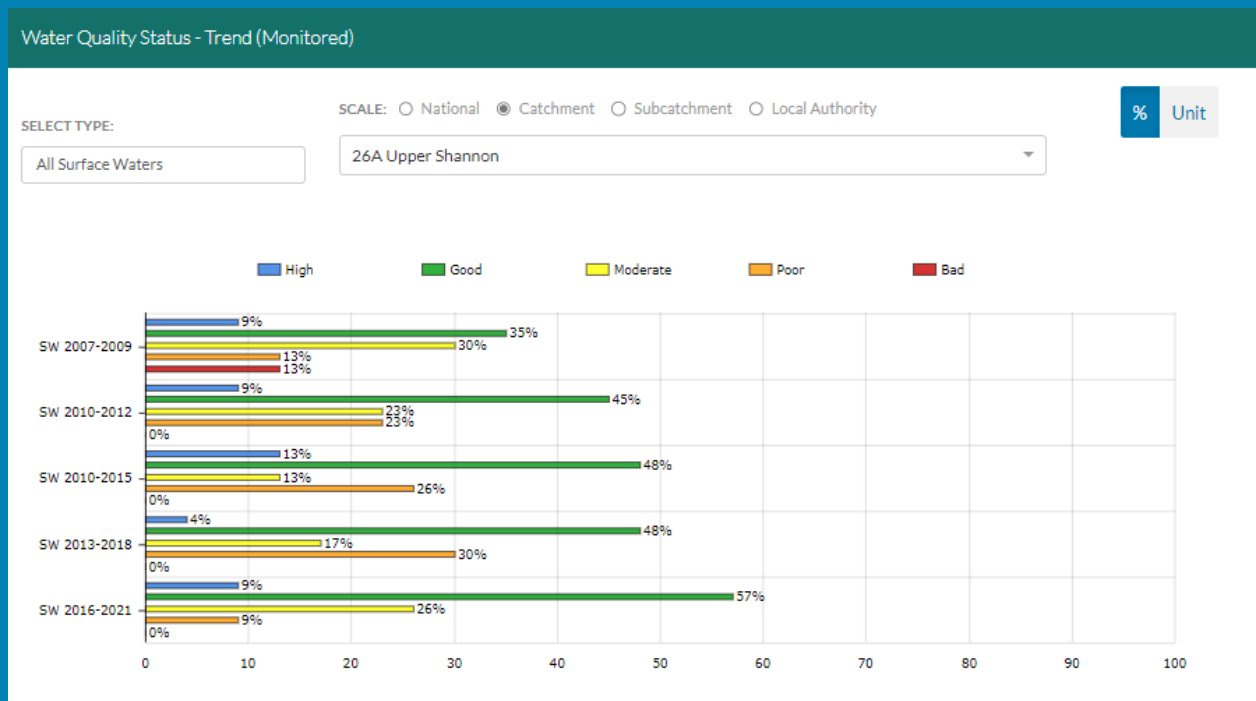
View Online Dashboard: <https://www.catchments.ie/data/#/dashboard/waterquality>

Action

Summary Information

Water Quality Changes

Below illustrates the changes in ecological status in monitored surface waterbodies over the last five monitoring cycles in the Upper Shannon (Lough Allen) Catchment. Nationally while there have been improvements in some waterbodies, these have been offset by declines elsewhere.



Ecological status trends for monitored surface waterbodies over the last five monitoring cycles in the Upper Shannon (Lough Allen) Catchment. **View online dashboard:** <https://www.catchments.ie/data/#/dashboard/waterquality>

A total of 40 (78%) waterbodies are currently meeting their environmental objective of Good or High Ecological Status, and Good Ecological Potential for canals.

	Total	Achieving Environmental Objectives (2016-2021)	High Status Environmental Objectives Waterbodies	Achieving High Status Environmental Objectives (2016-2021)
Rivers	24	17 (71%)		0 (0%)
Canals	1	1 (100%)	-	-
Lakes	8	4 (50%)	-	-
Transitional	-	-	-	-
Coastal	-	-	-	-
Groundwater	18	18 (100%)	-	-

Introduction

Water Quality Summary

High Status Objectives

Water Quality Changes

WFD Risk

Significant Pressures

Action

Summary Information

WFD Risk

Introduction

Water Quality Summary

High Status Objectives

Water Quality Changes

WFD Risk

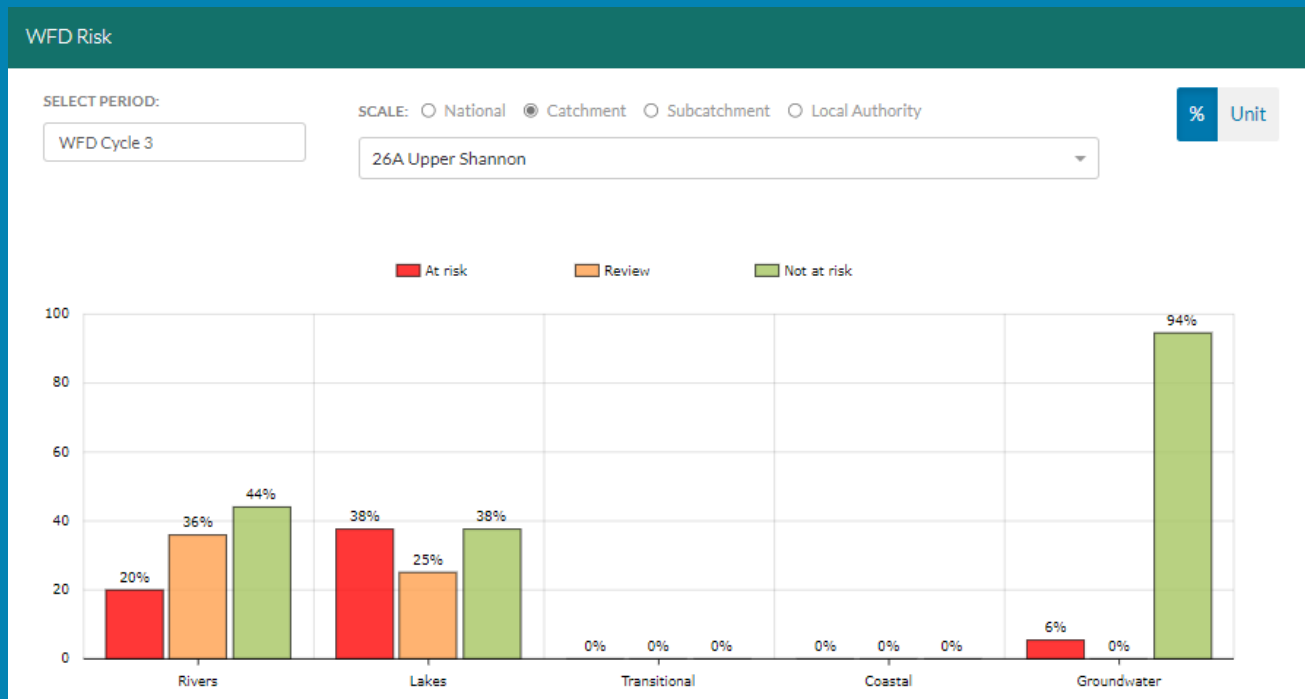
Significant Pressures

Action

Summary Information

A total of 9 (18%) waterbodies are *At Risk* of not meeting their environmental objective in the Upper Shannon (Lough Allen) Catchment, while 11 (22%) are under *Review* and 31 (61%) are *Not At Risk*.

[Go to EPA Water Map to see WFD Risk for this catchment](#)



WFD Risk for the Upper Shannon (Lough Allen) Catchment based on 2016-2021 data.
View Online Dashboard: <https://www.catchments.ie/data/#/dashboard/waterquality>

There are currently no heavily modified water bodies (HMWBs) in the Upper Shannon (Lough Allen) Catchment.

There is one artificial waterbody in the Upper Shannon (Lough Allen) Catchment; It is currently under *Review*.

- *Shannon Erne (Upper Shannon A)*

The [EPA's characterisation outcome report](#) has more information on WFD Risk

Introduction

Water Quality
Summary

High Status
Objectives

Water Quality
Changes

WFD Risk

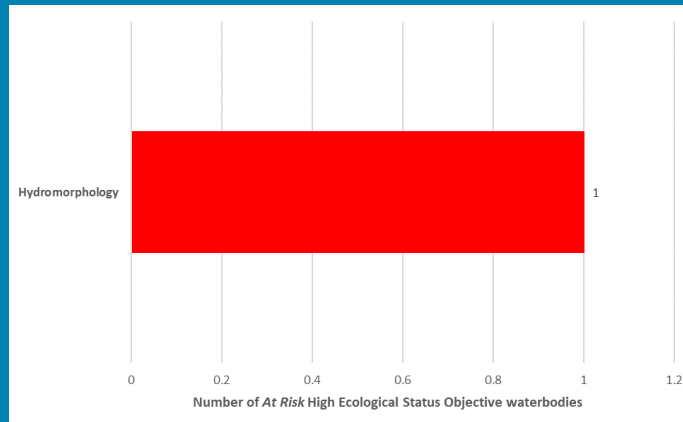
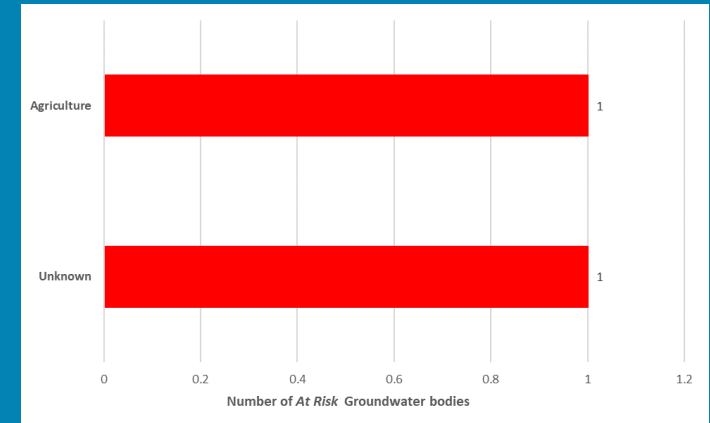
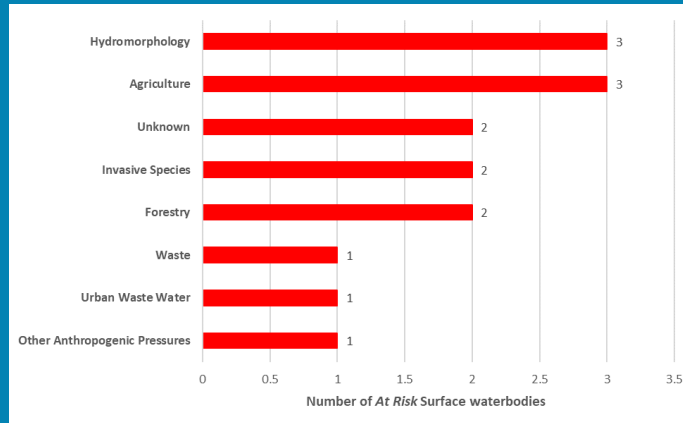
Significant
Pressures

Action

Summary
Information

Significant Pressures driving risk

Significant pressure types impacting the eight *At Risk* surface waterbodies and one groundwater body are broken down in the figures below, including significant pressure information for the one *At Risk* High Ecological Status Objective waterbody.



The issues driven by these pressures are mainly altered morphological condition (habitat), nutrient pollution and sediment impacts for surface water and chemical quality diminution for surface water and nutrient pollution for groundwaters. For more information, see <https://www.catchments.ie/data/#/dashboard/pressure?k=i351zs>.

Go to the Summary Information section to get significant pressure and issue data for At Risk waterbodies within the Upper Shannon (Lough Allen) Catchment.

Introduction

Water Quality
Summary

High Status
Objectives

Water Quality
Changes

WFD Risk

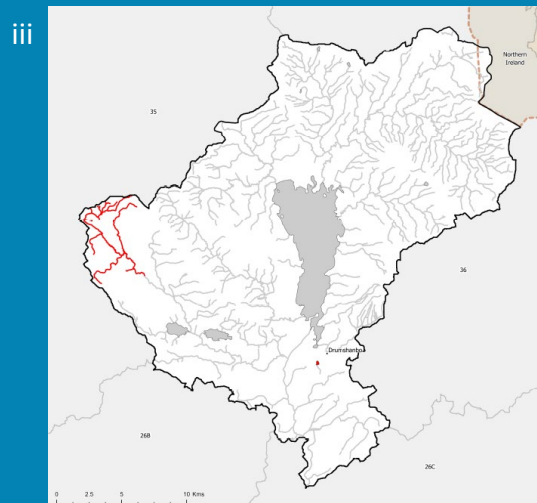
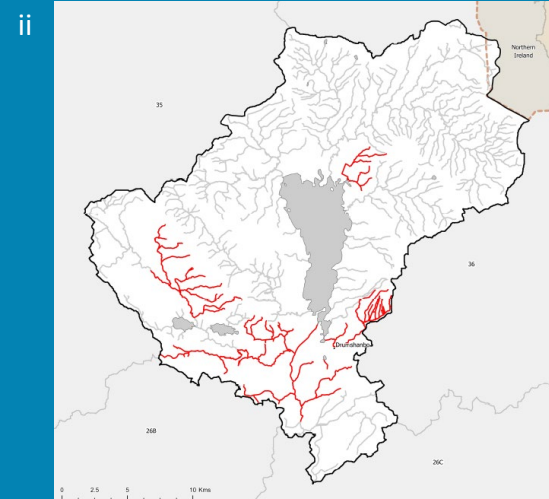
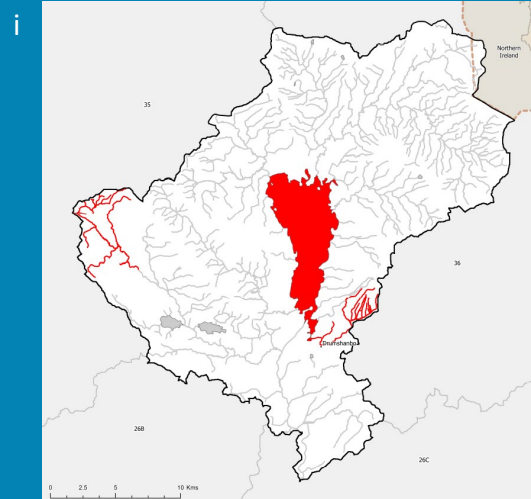
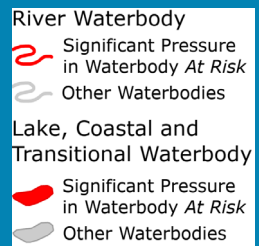
Significant
Pressures

Action

Summary
Information

Significant Pressures

Agriculture is the top significant pressure impacting 44% of the nine *At Risk* waterbodies within the Upper Shannon (Lough Allen) Catchment, followed by 33% impacted by Hydromorphological Pressures and 22% by Forestry.



The catchments.ie dashboards will show all significant pressures identified for this catchment.

www.catchments.ie/data/#/dashboard/pressure

Go to the [EPA Water Maps](#) for the locations of all significant pressure types identified for this catchment

Locations of At Risk surface waterbodies impacted by i) Agriculture, ii) Hydromorphological Pressures and iii) Forestry.

Introduction

Water Quality
Summary

High Status
Objectives

Water Quality
Changes

WFD Risk

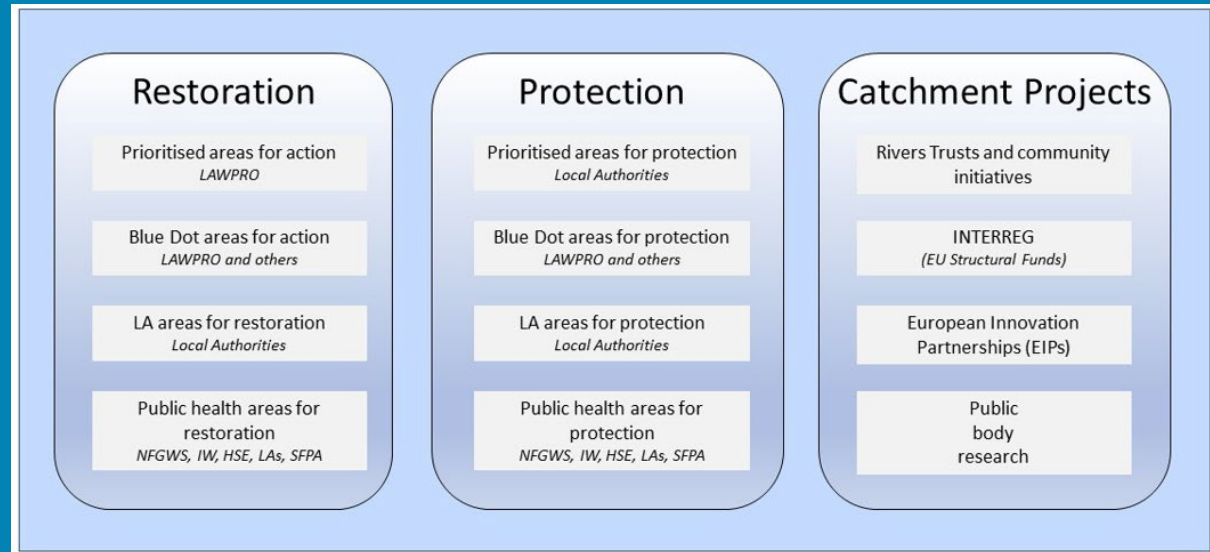
Significant
Pressures

Action

Summary
Information

Priority Areas for Action

A number of waterbodies have been prioritised through the selection of Areas for Action. There was one Priority Area for Action identified for the second river basin management planning cycle in the Upper Shannon (Lough Allen) Catchment. This has increased to a total of two Areas for Restoration and three Areas for Protection for the third cycle. **Go to the summary information section to get Area for Action information for waterbodies within the Upper Shannon (Lough Allen) Catchment.**



Types of Areas for Action under the third cycle River Basin Management Plan

- View the current progress of Areas for Action and Summary Reports completed by LAWPRO, on catchments.ie and the EPA Water Map:
 - <https://www.catchments.ie/data/#/areaforaction>
 - https://gis.epa.ie/EPAMaps/default?easting=?&northing=?&lid=EPA:WFD_AreasForAction
- LAWPRO have also published detailed desktop studies on Prioritised Areas for Action (PAAs) which are available their website: <https://lawaters.ie/desktop-studies/>
- Information on Areas for Action for the second cycle is available in Cycle 2 Catchment Assessments which have been archived on catchments.ie: <https://www.catchments.ie/download/cycle-2-catchment-assessments-published-september-2018/>

Introduction

Water Quality
Summary

High Status
Objectives

Water Quality
Changes

WFD Risk

Significant
Pressures

Action

Summary
Information

Summary information for all waterbodies in the Upper Shannon (Lough Allen) Catchment

The next page provides a table with a breakdown of key information for all waterbodies in this catchment. The key is provided below. Additional information for each waterbody is available on <https://www.catchments.ie/data>, including a breakdown of status, a monitoring schedule for monitored waterbodies and downloadable chemistry results, where available.

Protected Area categories	BW: Bathing Water DW: Drinking Water Fish: Salmonid Waters NSA: Nutrient Sensitive Areas SAC: Special Area of Conservation, Natura 2000 (water dependent habitats and species) SF: Shellfish Area SPA: Special Area of Protection, Natura 2000 (water dependent habitat and species)
Significant pressure* types categories <i>* For At Risk waterbodies only</i>	Ab: Abstractions Ag: Agriculture Aq: Aquaculture At: Atmospheric DWW: Domestic Wastewater For: Forestry HPS: Historically polluted sites HYMO: Hydromorphology Ind: Industry IS: Invasive Species M+Q: Mines and Quarries Peat: Peat Drainage and Extraction UR: Urban Run-Off UWW: Urban Wastewater Was: Waste WT: Water Treatment

Catchment Code	Waterbody (WB) Code	WB Name	WB Type	Local Authority	Protected Area	Status 10-15	Status 13-18	Status 16-21	Environmental Objective	Environmental Objective Date	WFD Risk 16-21	Significant Issue(s)	Significant Pressure(s)	Area for Action (AFA)	AFA (lead, type)	Link to WB page on catchments.ie	Link to WB on EPA Water Map
26A	IE_26A_AWB_SEW	Shannon Erne (Upper Shannon A)	Canal	Roscommon County Council		Poor	Poor	Moderate	Good	2021 or earlier	Review					View WB Page	View WB on EPA Water Map
26A, 35, 36	IE_NW_G_042	Glenfarne	Groundwater	Leitrim County Council	DWPA; SAC	Good	Good	Good	Good	2021 or earlier	Not at risk					View WB Page	View WB on EPA Water Map
26A, 26B, 26C, 26D, 26E, 34, 36	IE_SH_G_048	Carrick on Shannon	Groundwater	Roscommon County Council	DWPA; SAC	Good	Good	Good	Good	2021 or earlier	Not at risk					View WB Page	View WB on EPA Water Map
26A, 26B, 26C, 34, 35, 36	IE_SH_G_073	Curlew Mountains	Groundwater	Sligo County Council	DWPA; SAC	Good	Good	Good	Good	2021 or earlier	Not at risk					View WB Page	View WB on EPA Water Map
26A, 35, 36	IE_SH_G_105	Geevagh	Groundwater	Sligo County Council	DWPA	Good	Good	Good	Good	2021 or earlier	At risk	ChemicalQualityDiminution ForSW, Nutrients	Unknown, Ag			View WB Page	View WB on EPA Water Map
26A	IE_SH_G_262	Historic Waste Facility (S22-02567)	Groundwater	Cavan County Council	DWPA	Good	Good	Good	Good	2021 or earlier	Not at risk					View WB Page	View WB on EPA Water Map
26A, 26B, 34, 35	IE_WE_G_0028	Gorteen	Groundwater	Sligo County Council	DWPA; SAC	Good	Good	Good	Good	2021 or earlier	Not at risk					View WB Page	View WB on EPA Water Map
26A, 35	IE_WE_G_0036	Riverstown	Groundwater	Sligo County Council	DWPA	Good	Good	Good	Good	2021 or earlier	Not at risk					View WB Page	View WB on EPA Water Map
26A, 34, 35	IE_WE_G_0037	Ballymote	Groundwater	Sligo County Council	DWPA; SAC	Good	Good	Good	Good	2021 or earlier	Not at risk					View WB Page	View WB on EPA Water Map
26A, 35	IE_WE_G_0110	South Belhavel Lough	Groundwater	Leitrim County Council	DWPA	Good	Good	Good	Good	2021 or earlier	Not at risk					View WB Page	View WB on EPA Water Map
26A, 35, 36	IE_WE_G_0111	North Belhavel Lough	Groundwater	Leitrim County Council	DWPA; SAC	Good	Good	Good	Good	2021 or earlier	Not at risk					View WB Page	View WB on EPA Water Map
26A, 36	IEGBNI_NW_G_021	Ballintempo	Groundwater	Leitrim County Council	DWPA	Good	Good	Good	Good	2021 or earlier	Not at risk					View WB Page	View WB on EPA Water Map
26A, 26C, 36	IEGBNI_NW_G_031	Newtown-Ballyconnell	Groundwater	Cavan County Council	DWPA; SAC	Good	Good	Good	Good	2021 or earlier	Not at risk					View WB Page	View WB on EPA Water Map
26A, 36	IEGBNI_NW_G_035	Anierin-Cuilcagh East	Groundwater	Cavan County Council	DWPA; SAC	Good	Good	Good	Good	2021 or earlier	Not at risk					View WB Page	View WB on EPA Water Map
26A, 36	IEGBNI_NW_G_036	Marble Arch	Groundwater	Cavan County Council	DWPA; SAC	Good	Good	Good	Good	2021 or earlier	Not at risk					View WB Page	View WB on EPA Water Map
26A, 36	IEGBNI_NW_G_040	Claddagh-Swanlinbar	Groundwater	Cavan County Council	DWPA; SAC	Good	Good	Good	Good	2021 or earlier	Not at risk					View WB Page	View WB on EPA Water Map
26A, 35, 36	IEGBNI_SH_G_002	Lough Allen Uplands	Groundwater	Leitrim County Council	DWPA; SAC	Good	Good	Good	Good	2021 or earlier	Not at risk					View WB Page	View WB on EPA Water Map
26A, 36	IEGBNI_SH_G_003	Shannon Pot	Groundwater	Cavan County Council	DWPA	Good	Good	Good	Good	2021 or earlier	Not at risk					View WB Page	View WB on EPA Water Map
26A, 36	IEGBNI_SH_G_264	Glenade Dowra	Groundwater	Cavan County Council	DWPA; SAC	Good	Good	Good	Good	2021 or earlier	Not at risk					View WB Page	View WB on EPA Water Map
26A	IE_SH_26_410	Natire	Lake	Leitrim County Council	SAC;	Unassigned	High	High	Good	2021 or earlier	Not at risk					View WB Page	View WB on EPA Water Map
26A	IE_SH_26_411	Nawelean	Lake	Cavan County Council	DWPA; SAC;	Unassigned	High	High	Good	2021 or earlier	Not at risk			Doobally GWS	NFGWS, Protection	View WB Page	View WB on EPA Water Map
26A	IE_SH_26_536	Nambrack	Lake	Leitrim County Council	DWPA; SAC;	Unassigned	High	High	Good	2021 or earlier	Not at risk					View WB Page	View WB on EPA Water Map
26A	IE_SH_26_673	Skean	Lake	Roscommon County Council		Unassigned	Moderate	Moderate	Good	2022-2027	Review			Feorish (Ballyfarnon)	LAWPRO, Restoration	View WB Page	View WB on EPA Water Map
26A	IE_SH_26_681	Acres	Lake	Leitrim County Council		Poor	Poor	Poor	Good	2022-2027	At risk	Morphological, Nutrients	For			View WB Page	View WB on EPA Water Map
26A	IE_SH_26_698	Killooman	Lake	Leitrim County Council	SAC;	Unassigned	High	High	Good	2021 or earlier	Review					View WB Page	View WB on EPA Water Map
26A	IE_SH_26_711	Meelagh	Lake	Roscommon County Council		Poor	Poor	Poor	Good	2022-2027	At risk	Sediment, Morphological, Chemical, Nutrients	Other, Was, IS	Feorish (Ballyfarnon)	LAWPRO, Restoration	View WB Page	View WB on EPA Water Map
26A	IE_SH_26_716	Allen	Lake	Leitrim County Council		Moderate	Moderate	Moderate	Good	2022-2027	At risk	Morphological, Nutrients	Ag, IS	Lough Allen	LAWPRO, Restoration	View WB Page	View WB on EPA Water Map
26A	IE_SH_26A020100	ARIGNA (ROSCOMMON)_010	River	Sligo County Council		Good	Good	Good	Good	2021 or earlier	Not at risk					View WB Page	View WB on EPA Water Map
26A	IE_SH_26A020300	ARIGNA (ROSCOMMON)_020	River	Roscommon County Council		Good	Good	Good	Good	2021 or earlier	Not at risk					View WB Page	View WB on EPA Water Map
26A	IE_SH_26B320120	BELLAVALLY STREAM_010	River	Cavan County Council	SAC;	High	High	High	High	2021 or earlier	Not at risk					View WB Page	View WB on EPA Water Map
26A	IE_SH_26D020200	DIFFAGHER_010	River	Leitrim County Council	SAC;	Good	Good	Moderate	Good	2022-2027	At risk	UnknownImpactType	Unknown			View WB Page	View WB on EPA Water Map
26A	IE_SH_26D050400	Drumshanbo stream_010	River	Leitrim County Council	SAC;	Poor	Poor	Moderate	Good	2022-2027	At risk	Hydrological, Morphological, Nutrients, Organic	Ag, HYMO, UWW	Lough Allen	LAWPRO, Restoration	View WB Page	View WB on EPA Water Map
26A	IE_SH_26F020080	FEORISH (BALLYFARNON)_010	River	Sligo County Council		Good	Good	Moderate	Good	2022-2027	At risk	Sediment, Nutrients	For, Ag	Feorish (Ballyfarnon)	LAWPRO, Restoration	View WB Page	View WB on EPA Water Map
26A	IE_SH_26F020250	FEORISH (BALLYFARNON)_020	River	Sligo County Council		High	Good	Good	High	2022-2027	At risk	Morphological	HYMO	Feorish (Ballyfarnon)	LAWPRO, Restoration	View WB Page	View WB on EPA Water Map
26A	IE_SH_26F020400	FEORISH (BALLYFARNON)_030	River	Roscommon County Council		Poor	Poor	Moderate	Good	2022-2027	Review			Feorish (Ballyfarnon)	LAWPRO, Restoration	View WB Page	View WB on EPA Water Map
26A	IE_SH_26G120050	GOWLAUNREVAGH_010	River	Leitrim County Council		Poor	Poor	Good	Good	2021 or earlier	Not at risk					View WB Page	View WB on EPA Water Map
26A	IE_SH_26O020100	OWENGAR (LEITRIM)_010	River	Leitrim County Council		Good	Good	Good	Good	2021 or earlier	Not at risk					View WB Page	View WB on EPA Water Map

26A	IE_SH_260020200	OWENGAR (LEITRIM)_020	River	Leitrim County Council		Good	Good	Good	Good	2021 or earlier	Review					View WB Page	View WB on EPA Water Map
26A	IE_SH_260030300	OWENMORE (GLANGEVLIN)_010	River	Cavan County Council	SAC;	Good	Good	Good	Good	2021 or earlier	Not at risk			Glangevlin GWS	NFGWS, Protection	View WB Page	View WB on EPA Water Map
26A	IE_SH_260050050	OWENNAYLE_010	River	Leitrim County Council	SAC;	Moderate	Moderate	Good	Good	2021 or earlier	Review			Lough Allen	LAWPRO, Restoration	View WB Page	View WB on EPA Water Map
26A	IE_SH_260050100	OWENNAYLE_020	River	Cavan County Council	SAC;	Good	Moderate	High	Good	2021 or earlier	Not at risk			Lough Allen	LAWPRO, Restoration	View WB Page	View WB on EPA Water Map
26A	IE_SH_26S020300	SHANNON (Upper)_020	River	Cavan County Council	SAC;	Good	Good	Good	Good	2021 or earlier	Not at risk					View WB Page	View WB on EPA Water Map
26A	IE_SH_26S020340	SHANNON (Upper)_030	River	Leitrim County Council		Unassigned	Good	High	Good	2021 or earlier	Review			Lough Allen	LAWPRO, Restoration	View WB Page	View WB on EPA Water Map
26A	IE_SH_26S020500	SHANNON (Upper)_040	River	Leitrim County Council	SAC;	Moderate	Moderate	Moderate	Good	2022-2027	At risk	Morphological, OtherSignificantImpacts	HYMO, Unknown	Lough Allen	LAWPRO, Restoration	View WB Page	View WB on EPA Water Map
26A	IE_SH_26S020550	SHANNON (Upper)_050	River	Leitrim County Council		Unassigned	Good	Moderate	Good	2022-2027	Review					View WB Page	View WB on EPA Water Map
26A	IE_SH_26S090100	STONY_010	River	Leitrim County Council	SAC;	Unassigned	Good	High	Good	2021 or earlier	Review			Lough Allen	LAWPRO, Restoration	View WB Page	View WB on EPA Water Map
26A	IE_SH_26S650770	SHEKINACURRY_010	River	Leitrim County Council	SAC;	Unassigned	Good	Good	Good	2021 or earlier	Review			Lough Allen	LAWPRO, Restoration	View WB Page	View WB on EPA Water Map
26A	IE_SH_26T050840	TARMO_010	River	Leitrim County Council		Unassigned	Good	Good	Good	2021 or earlier	Review			Lough Allen	LAWPRO, Restoration	View WB Page	View WB on EPA Water Map
26A	IE_SH_26Y010100	YELLOW (BALLINAGLERA)_010	River	Leitrim County Council	SAC;	High	Poor	Good	Good	2021 or earlier	Not at risk					View WB Page	View WB on EPA Water Map
26A	IE_SH_26Y010200	YELLOW (BALLINAGLERA)_020	River	Leitrim County Council	SAC;	Good	Good	Good	Good	2021 or earlier	Not at risk					View WB Page	View WB on EPA Water Map
26A	UKGBNI1SH262601001	SHANNON (Upper)_010	River	Cavan County Council	DWPA; SAC;	Good	Good	Good	Good	2021 or earlier	Not at risk			Gowlan GWS	NFGWS, Protection	View WB Page	View WB on EPA Water Map