

**Cycle 3**

**HA 26D Upper Shannon (Suck) Catchment  
Report, May 2024**



Introduction

Water Quality  
Summary

High Status  
Objectives

Water Quality  
Changes

WFD Risk

Significant  
Pressures

Action

Summary  
Information

# Introduction

This report provides an overview of the water quality in the Upper Shannon (Suck) Catchment and the pressures impacting on water quality. This report is based on data up to 2021. The latest water quality data, dashboards and maps throughout this report are available on [catchments.ie](https://catchments.ie) and [EPA Water Map](https://www.epa.ie/maps/).

The Upper Shannon (Suck) Catchment covers an area of 1,598km<sup>2</sup> and is underlain completely by karstified bedrock, apart from some isolated pockets and the most southerly part of the catchment downstream of Ballinasloe. The catchment is dominated by a flat undulating topography, and the groundwater and surface water drainage systems are highly interlinked throughout the catchment.

The Upper Shannon (Suck) Catchment is divided into 11 subcatchments with 58 river waterbodies, one lake waterbody and 17 groundwater bodies.

[View the Upper Shannon \(Suck\) Catchment on the EPA Water Map](#)

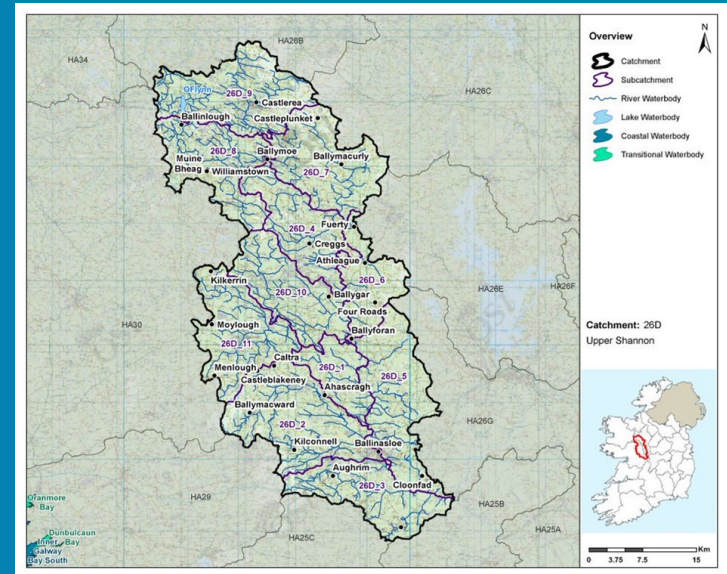
## Previous Catchment Assessments

Previous catchment assessments, which provide additional historic context and information, are archived on [catchments.ie](https://catchments.ie):

- [Cycle 2 Catchment Assessments – published September 2018](#)
- [Cycle 3 Draft Catchment Assessments – published September 2021](#)

## Online Dashboards

Links to online dashboards are provided in this report – these numbers may vary from those in this document as time progress and the online dashboards are updated based on the latest data and scientific assessments.



Overview of Subcatchments in the Upper Shannon (Suck) Catchment

Introduction

Water Quality Summary

High Status Objectives

Water Quality Changes

WFD Risk

Significant Pressures

Action

Summary Information

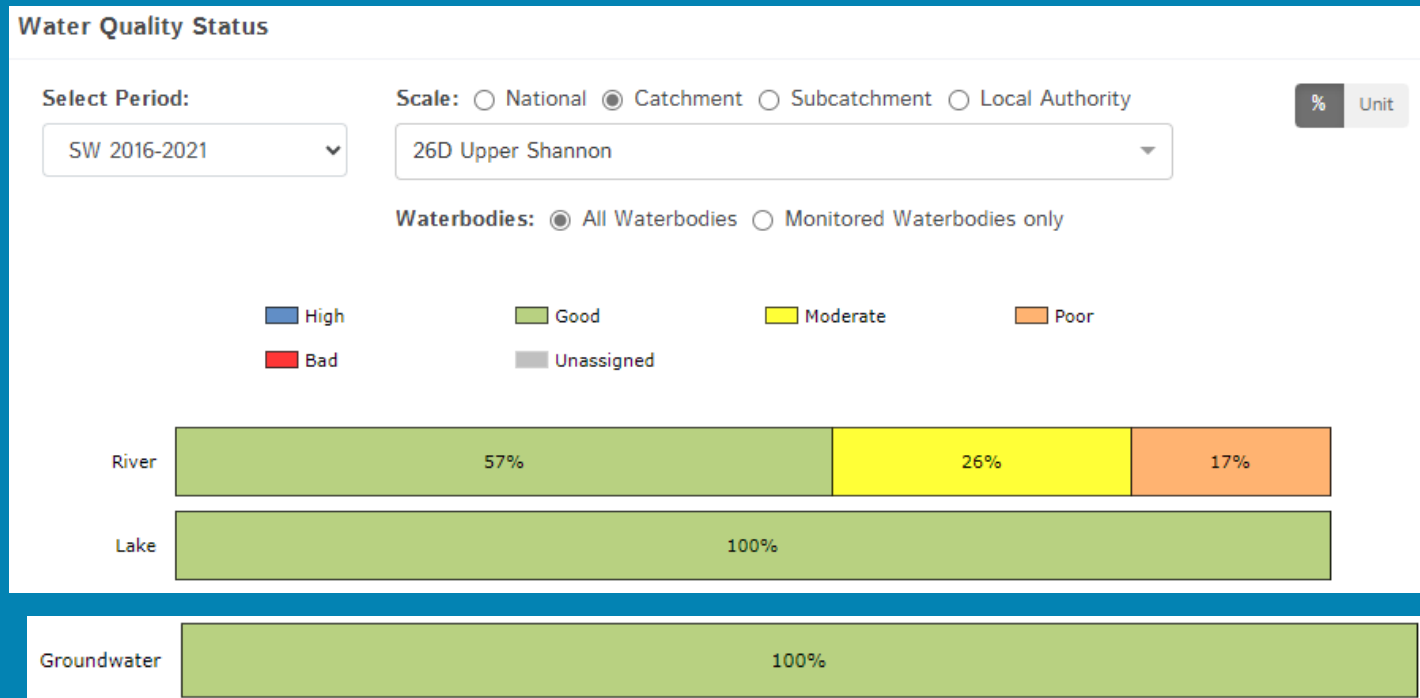
# Water Quality Summary

The dashboard below provides a breakdown of water quality status for surface and groundwater bodies in the Upper Shannon (Suck) Catchment.

A total of 58% of surface waterbodies were at Good Ecological Status in the 2016-2021 monitoring period. One hundred percent of groundwater bodies were at Good status.

**Go to EPA Water Maps for WFD Status**

[EPA Water Map](#)



Water quality status 2016-2021 for the Upper Shannon (Suck) Catchment.  
View Online Dashboard: <https://www.catchments.ie/data/#/dashboard/waterquality>

# High Status Objective Waterbodies

Introduction

High status waters are prioritised for protection and action.

There are five waterbodies with a **High Ecological Status Objective** (HSO) in the Upper Shannon (Suck) Catchment, with all five currently not meeting their environmental objective of High.

Water Quality Summary

High Status Objectives

Grants for septic tank upgrades may be available in high status objective catchment areas - you can learn more and check your Eircode for eligibility here: <https://www.gov.ie/en/publication/6cc1e-domestic-waste-water-treatment-systems-septic-tanks>

[View HSO river waterbodies in this catchment.](#)

**See Status and Risk / High Status Objective for other waterbody types.**

Water Quality Changes

WFD Risk

Significant Pressures

Action

Summary Information

## Water Quality Status - High Status Objective Waterbodies

Select Type:

All Surface Waters

Scale:  Catchment  Local Authority

26D Upper Shannon

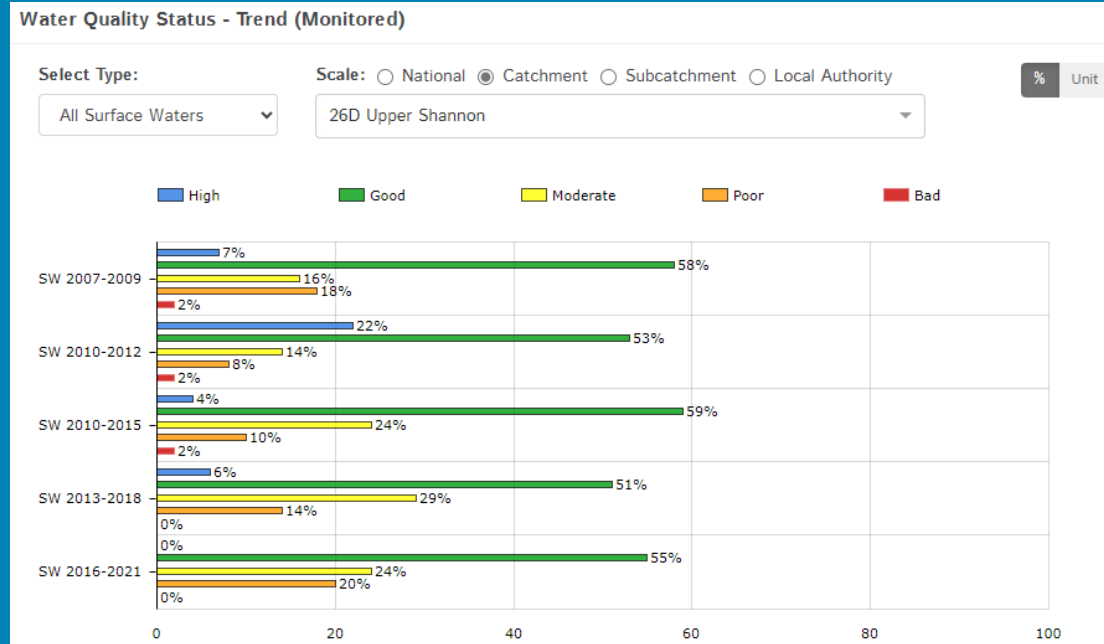
	SW 2007-2009	SW 2010-2012	SW 2010-2015	SW 2013-2018	SW 2016-2021
ISLAND_030 (River)	High	High	Good	Good	Good
KILLIAN_030 (River)	Good	High	High	High	Good
SHIVEN (SOUTH)_050 (River)	High	High	Good	Good	Good
SUCK_020 (River)	Unassigned	High	Good	High	Good
SUCK_040 (River)	Unassigned	High	High	High	Good

Water quality status for High Ecological Status Objective waterbodies.

**View Online Dashboard:** <https://www.catchments.ie/data/#/dashboard/waterquality>

# Water Quality Changes

Below illustrates the changes in ecological status in monitored surface waterbodies over the last five monitoring cycles in the Upper Shannon (Suck) Catchment. Nationally while there have been improvements in some waterbodies, these have been offset by declines elsewhere.



Ecological status trends for monitored surface waterbodies over the last five monitoring cycles in the Upper Shannon (Suck) Catchment.

View online dashboard: <https://www.catchments.ie/data/#/dashboard/waterquality>

A total of 46 (61%) waterbodies are currently meeting their environmental objective of Good or High Ecological Status.

	Total	Achieving Environmental Objectives (2016-2021)	High Status Environmental Objectives Waterbodies	Achieving High Status Environmental Objectives (2016-2021)
<b>Rivers</b>	58	28 (48%)	5	0 (0%)
<b>Canals</b>	-	-	-	-
<b>Lakes</b>	1	1 (100%)	0	0 (0%)
<b>Transitional</b>	-	-	-	-
<b>Coastal</b>	-	-	-	-
<b>Groundwater</b>	17	17 (100%)	0	0 (0%)

Introduction

Water Quality Summary

High Status Objectives

Water Quality Changes

WFD Risk

Significant Pressures

Action

Summary Information

# WFD Risk

Introduction

Water Quality Summary

High Status Objectives

Water Quality Changes

WFD Risk

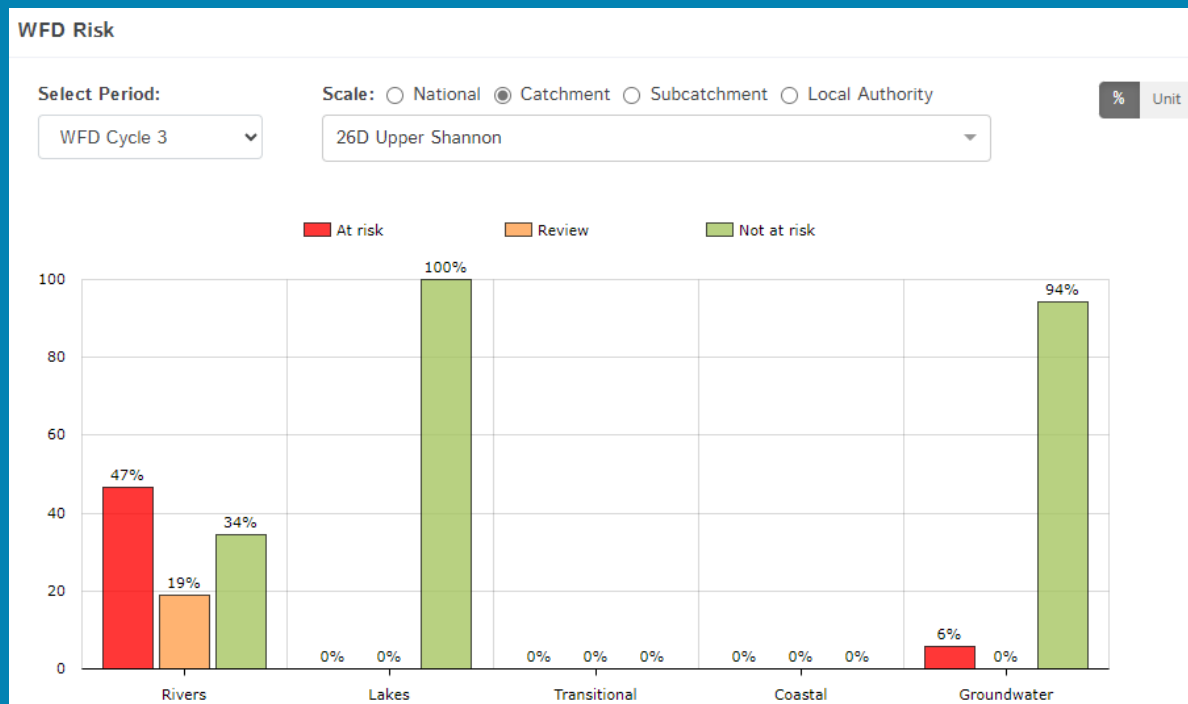
Significant Pressures

Action

Summary Information

A total of 28 (37%) waterbodies are *At Risk* of not meeting their environmental objective in the Upper Shannon (Suck) Catchment, while 11 (14%) are under *Review* and 37 (49%) are *Not At Risk*.

Go to [EPA Water Map](#) to see *WFD Risk for this catchment*



WFD Risk for the Upper Shannon (Suck) Catchment based on 2016-2021 data.

View Online Dashboard: <https://www.catchments.ie/data/#/dashboard/waterquality>

There are currently no heavily modified water bodies (HMWBs) in the Upper Shannon (Suck) Catchment.

There are no artificial waterbodies in the Upper Shannon (Suck) Catchment.

The [EPA's characterisation outcome report](#) has more information on WFD Risk

Introduction

Water Quality  
Summary

High Status  
Objectives

Water Quality  
Changes

WFD Risk

Significant  
Pressures

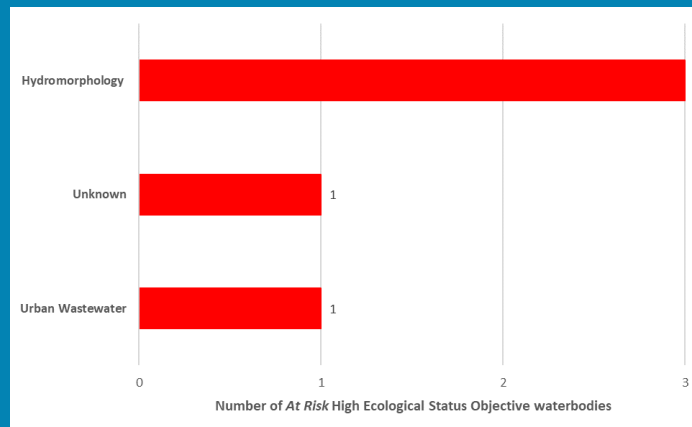
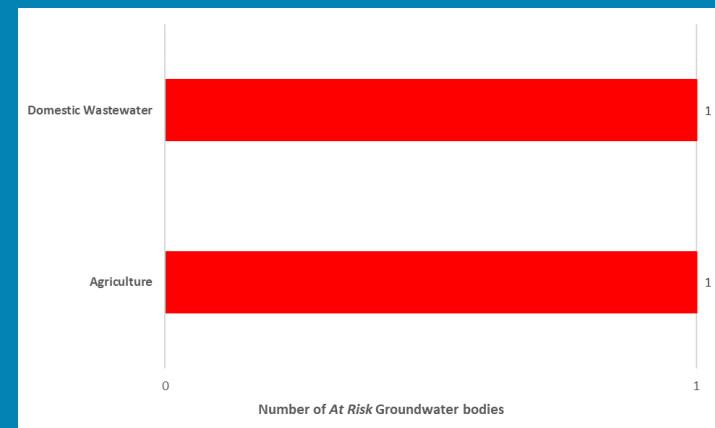
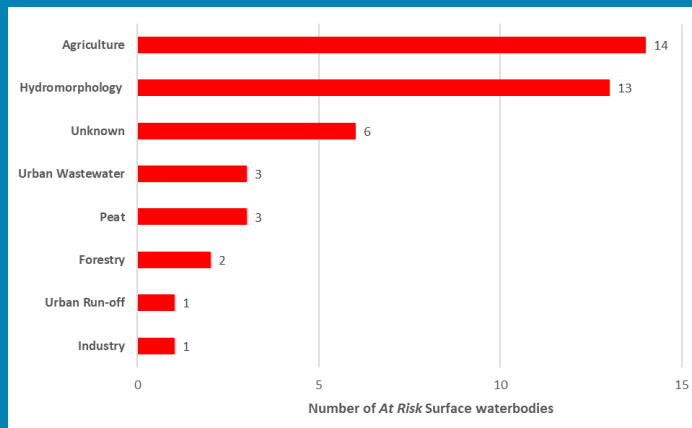
Action

Summary  
Information

## Significant Pressures driving risk

Click [here](#) for more information on significant pressures

Significant pressure types impacting the 27 *At Risk* surface waterbodies and one groundwater body are broken down in the figures below, including significant pressure information for the five *At Risk* High Ecological Status Objective waterbodies.



The issues driven by these pressures are mainly altered morphological condition (habitat), nutrient pollution and organic pollution impacts for surface water, and chemical quality diminution for surface water and nutrient pollution for groundwaters. For more information, see <https://www.catchments.ie/data/#/dashboard/pressure?k=i351zs>.

*Go to the Summary Information section to get significant pressure and issue data for At Risk waterbodies within the Upper Shannon (Suck) Catchment.*

Introduction

Water Quality  
Summary

High Status  
Objectives

Water Quality  
Changes

WFD Risk

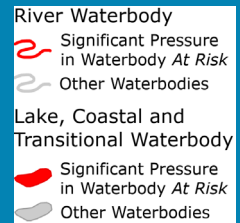
Significant  
Pressures

Action

Summary  
Information

# Significant Pressures

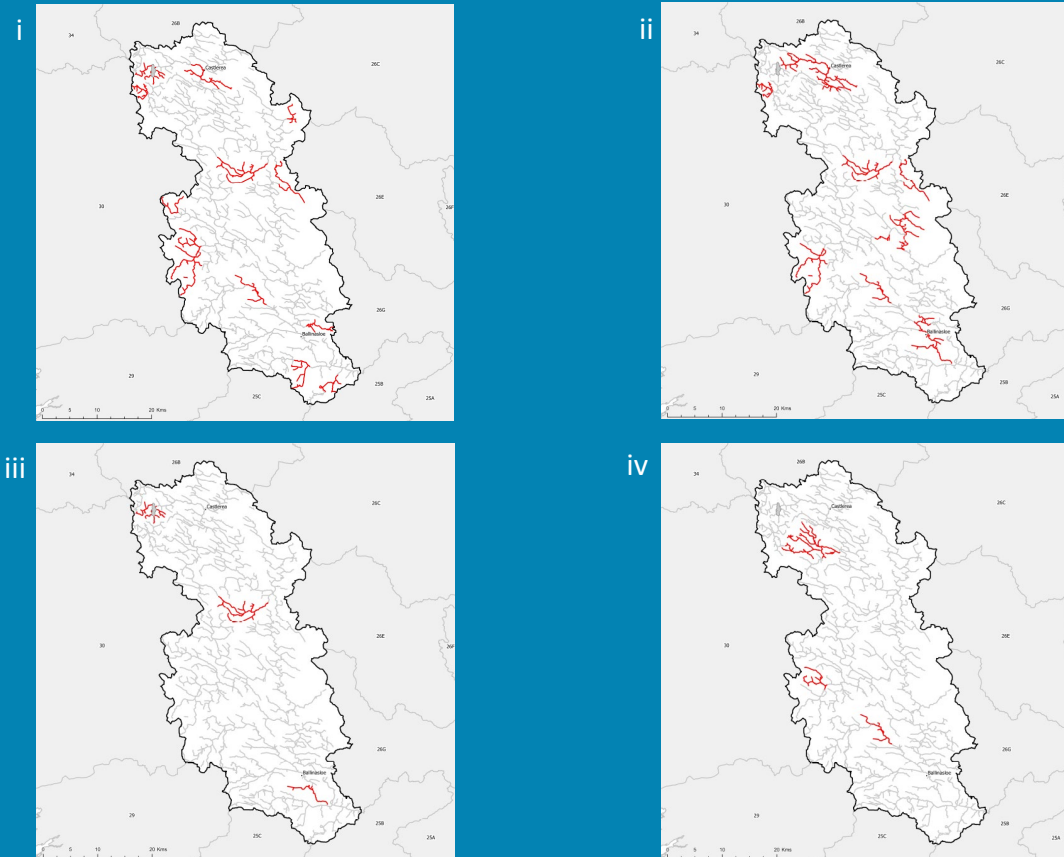
Agriculture is the top significant pressure impacting 54% of the 28 *At Risk* waterbodies within the Upper Shannon (Suck) Catchment, followed by 46% impacted by hydromorphological pressures and 11% by both peat and urban wastewater.



*The catchments.ie dashboards will show all significant pressures identified for this catchment.*

[www.catchments.ie/data/#/dashboard/pressure](http://www.catchments.ie/data/#/dashboard/pressure)

Go to the [EPA Water Maps](#) for the locations of all significant pressure types identified for this catchment



*Locations of At Risk surface waterbodies impacted by i) Agriculture, ii) Hydromorphological Pressures, iii) Peat and iv) Urban Wastewater.*

Introduction

Water Quality  
Summary

High Status  
Objectives

Water Quality  
Changes

WFD Risk

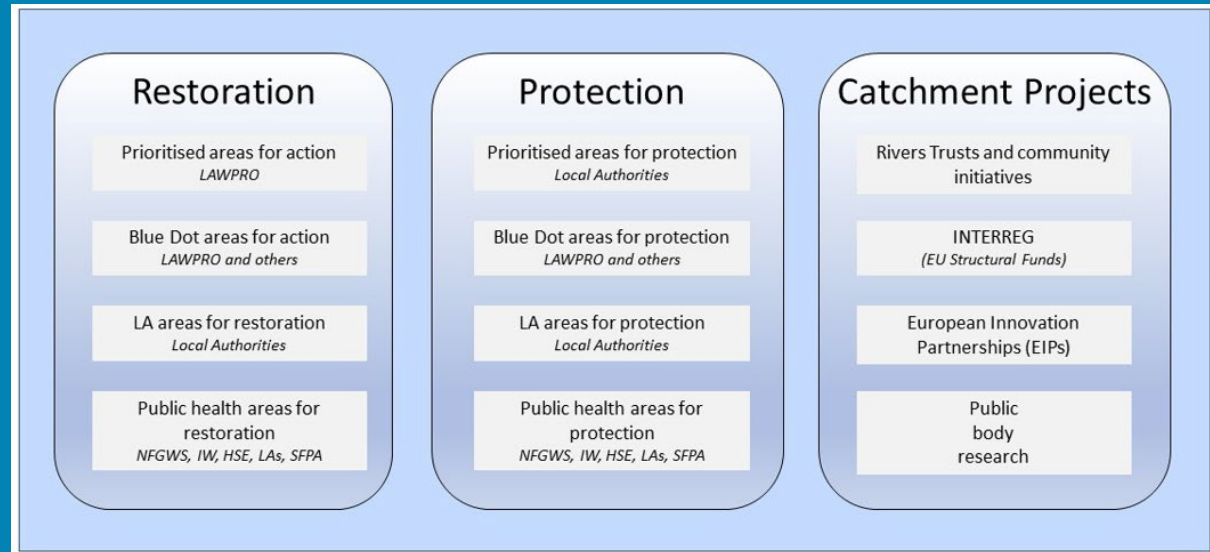
Significant  
Pressures

Action

Summary  
Information

## Priority Areas for Action

A number of waterbodies have been prioritised through the selection of Areas for Action. There were four Priority Areas for Action identified for the second river basin management planning cycle in the Upper Shannon (Suck) Catchment. This has increased to a total of eight Areas for Restoration, one Area for Protection and two Catchment Projects for the third cycle. ***Go to the summary information section to get Area for Action information for waterbodies within the Upper Shannon (Suck) Catchment.***



*Types of Areas for Action under the third cycle River Basin Management Plan*

- View the current progress of Areas for Action and Summary Reports completed by LAWPRO, on catchments.ie and the EPA Water Map:
  - <https://www.catchments.ie/data/#/areaforaction>
  - [https://gis.epa.ie/EPAMaps/default?easting=?&northing=?&lid=EPA:WFD\\_AreasForAction](https://gis.epa.ie/EPAMaps/default?easting=?&northing=?&lid=EPA:WFD_AreasForAction)
- LAWPRO have also published detailed desktop studies on Prioritised Areas for Action (PAAs) which are available their website: <https://lawaters.ie/desktop-studies/>
- Information on Areas for Action for the second cycle is available in Cycle 2 Catchment Assessments which have been archived on catchments.ie: <https://www.catchments.ie/download/cycle-2-catchment-assessments-published-september-2018/>

Introduction

Water Quality  
Summary

High Status  
Objectives

Water Quality  
Changes

WFD Risk

Significant  
Pressures

Action

Summary  
Information

## Summary information for all waterbodies in the Upper Shannon (Suck) Catchment

The next page provides a table with a breakdown of key information for all waterbodies in this catchment. The key is provided below. Additional information for each waterbody is available on <https://www.catchments.ie/data>, including a breakdown of status, a monitoring schedule for monitored waterbodies and downloadable chemistry results, where available.

<b>Protected Area categories</b>	BW: Bathing Water DW: Drinking Water Fish: Salmonid Waters NSA: Nutrient Sensitive Areas SAC: Special Area of Conservation, Natura 2000 (water dependent habitats and species) SF: Shellfish Area SPA: Special Area of Protection, Natura 2000 (water dependent habitat and species)
<b>Significant pressure* types categories</b>  <i>* For At Risk waterbodies only</i>	Ab: Abstractions Ag: Agriculture Aq: Aquaculture At: Atmospheric DWW: Domestic Wastewater For: Forestry HPS: Historically polluted sites HYMO: Hydromorphology Ind: Industry IS: Invasive Species M+Q: Mines and Quarries Peat: Peat Drainage and Extraction UR: Urban Run-Off UWW: Urban Wastewater Was: Waste WT: Water Treatment

Catchment Code	Waterbody (WB) Code	WB Name	WB Type	Local Authority	Protected Area	Status 10-15	Status 13-18	Status 16-21	Environmental Objective	Environmental Objective Date	WFD Risk 16-21	Significant Issue(s)	Significant Pressure(s)	Area for Action (AFA)	AFA (lead, type)	Link to WB page on catchments.ie	Link to WB on EPA Water Map
26D, 26E, 26G	IE_SH_G_014	Athlone West	Groundwater	Roscommon County Council	DWPA; SAC	Good	Good	Good	Good	2021 or earlier	Not at risk					<a href="#">View WB Page</a>	<a href="#">View WB on EPA Water Map</a>
25B, 25C, 26D, 26G, 29	IE_SH_G_019	Aughrim	Groundwater	Galway County Council	DWPA; SAC	Good	Good	Good	Good	2021 or earlier	Not at risk					<a href="#">View WB Page</a>	<a href="#">View WB on EPA Water Map</a>
26D	IE_SH_G_028	Ballygar	Groundwater	Galway County Council	DWPA; SAC	Good	Good	Good	Good	2021 or earlier	Not at risk					<a href="#">View WB Page</a>	<a href="#">View WB on EPA Water Map</a>
26A, 26B, 26C, 26D, 26E, 34, 36	IE_SH_G_048	Carrick on Shannon	Groundwater	Roscommon County Council	DWPA; SAC	Good	Good	Good	Good	2021 or earlier	Not at risk					<a href="#">View WB Page</a>	<a href="#">View WB on EPA Water Map</a>
26B, 26D, 30	IE_SH_G_053	Castlerea	Groundwater	Roscommon County Council	DWPA; SAC	Good	Good	Good	Good	2021 or earlier	Not at risk					<a href="#">View WB Page</a>	<a href="#">View WB on EPA Water Map</a>
26B, 26D	IE_SH_G_054	Castlerea Bellanagare	Groundwater	Roscommon County Council	DWPA; SAC	Good	Good	Good	Good	2021 or earlier	Not at risk					<a href="#">View WB Page</a>	<a href="#">View WB on EPA Water Map</a>
26C, 26D, 26E, 26G	IE_SH_G_091	Funshinagh	Groundwater	Roscommon County Council	DWPA; SAC	Good	Good	Good	Good	2021 or earlier	Not at risk					<a href="#">View WB Page</a>	<a href="#">View WB on EPA Water Map</a>
26D, 26E	IE_SH_G_173	Mount Mary	Groundwater	Galway County Council	DWPA	Good	Good	Good	Good	2021 or earlier	Not at risk					<a href="#">View WB Page</a>	<a href="#">View WB on EPA Water Map</a>
26B, 26D, 30, 34	IE_SH_G_224	Suck North	Groundwater	Roscommon County Council	DWPA; SAC	Good	Good	Good	Good	2021 or earlier	Not at risk					<a href="#">View WB Page</a>	<a href="#">View WB on EPA Water Map</a>
26B, 26C, 26D, 26E, 26G, 29, 30	IE_SH_G_225	Suck South	Groundwater	Galway County Council	DWPA; SAC	Good	Good	Good	Good	2021 or earlier	Not at risk					<a href="#">View WB Page</a>	<a href="#">View WB on EPA Water Map</a>
25B, 25C, 26D, 26G, 29	IE_SH_G_236	Tynagh	Groundwater	Galway County Council	DWPA; SAC	Good	Good	Good	Good	2021 or earlier	Not at risk					<a href="#">View WB Page</a>	<a href="#">View WB on EPA Water Map</a>
26B, 26D	IE_SH_G_241	GWDTE-Bellanagare Bog (SAC000592)	Groundwater	Roscommon County Council	DWPA; SAC (GWDTE)	Good	Good	Good	Good	2021 or earlier	Not at risk					<a href="#">View WB Page</a>	<a href="#">View WB on EPA Water Map</a>
26D, 30	IE_WE_G_0005	Dunmore	Groundwater	Galway County Council	DWPA; SAC	Good	Good	Good	Good	2021 or earlier	Not at risk					<a href="#">View WB Page</a>	<a href="#">View WB on EPA Water Map</a>
26D, 29, 30, 34	IE_WE_G_0020	Clare-Corrib	Groundwater	Galway County Council	DWPA; SAC	Good	Good	Good	Good	2021 or earlier	Not at risk					<a href="#">View WB Page</a>	<a href="#">View WB on EPA Water Map</a>
26B, 26D, 30, 32, 34, 35	IE_WE_G_0033	Swinford	Groundwater	Mayo County Council	DWPA; SAC	Good	Good	Good	Good	2021 or earlier	Not at risk					<a href="#">View WB Page</a>	<a href="#">View WB on EPA Water Map</a>
26D, 30	IE_WE_G_0094	GWDTE-Glenamaddy Turlough (SAC000301)	Groundwater	Galway County Council	DWPA; SAC (GWDTE)	Good	Good	Good	Good	2021 or earlier	Not at risk					<a href="#">View WB Page</a>	<a href="#">View WB on EPA Water Map</a>
25C, 26D, 29, 30	IE_WE_G_0100	GWDTE-Rahasane Turlough (SAC000322)	Groundwater	Galway County Council	DWPA; SAC (GWDTE)	Good	Good	Good	Good	2021 or earlier	At risk	ChemicalQualityDiminution ForSW, Nutrients	DWTS, Ag			<a href="#">View WB Page</a>	<a href="#">View WB on EPA Water Map</a>
26D	IE_SH_26_693	O'Flynn	Lake	Roscommon County Council		Poor	Good	Good	Good	2021 or earlier	Not at risk			Upper Suck	LAWPRO, Restoration	<a href="#">View WB Page</a>	<a href="#">View WB on EPA Water Map</a>
26D	IE_SH_26A010050	AHASCRAUGH_010	River	Galway County Council		Good	Good	Good	Good	2021 or earlier	Not at risk			Lower Suck	LAWPRO, Restoration	<a href="#">View WB Page</a>	<a href="#">View WB on EPA Water Map</a>
26D	IE_SH_26A010200	AHASCRAUGH_020	River	Galway County Council		Good	Good	Good	Good	2021 or earlier	Not at risk			Lower Suck	LAWPRO, Restoration	<a href="#">View WB Page</a>	<a href="#">View WB on EPA Water Map</a>
26D	IE_SH_26A010400	AHASCRAUGH_030	River	Galway County Council		Moderate	Poor	Poor	Good	2022-2027	At risk	Sediment, Morphological, Nutrients, Organic	HYMO, Ag, UWW	Lower Suck	LAWPRO, Restoration	<a href="#">View WB Page</a>	<a href="#">View WB on EPA Water Map</a>
26D	IE_SH_26A010500	AHASCRAUGH_040	River	Galway County Council	DWPA; SPA;	Good	Good	Good	Good	2021 or earlier	Not at risk			Lower Suck	LAWPRO, Restoration	<a href="#">View WB Page</a>	<a href="#">View WB on EPA Water Map</a>
26D	IE_SH_26B010300	BALLINURE_010	River	Galway County Council	SAC;	Good	Good	Good	Good	2021 or earlier	Review			Ballinure	LAWPRO, Restoration	<a href="#">View WB Page</a>	<a href="#">View WB on EPA Water Map</a>
26D	IE_SH_26B010400	BALLINURE_020	River	Galway County Council		Moderate	Moderate	Poor	Good	2022-2027	At risk	Nutrients	Ag	Ballinure	LAWPRO, Restoration	<a href="#">View WB Page</a>	<a href="#">View WB on EPA Water Map</a>
26D	IE_SH_26B150840	BALLYGLASS_010	River	Roscommon County Council	SPA;	Unassigned	Good	Good	Good	2021 or earlier	Review			Lower Suck	LAWPRO, Restoration	<a href="#">View WB Page</a>	<a href="#">View WB on EPA Water Map</a>
26D	IE_SH_26C030100	CASTLEGAR_010	River	Galway County Council		Moderate	Moderate	Moderate	Good	2022-2027	At risk	Hydrological, Morphological, Nutrients	Ag, HYMO	Castlegar	LAWPRO, Restoration	<a href="#">View WB Page</a>	<a href="#">View WB on EPA Water Map</a>
26D	IE_SH_26C030200	CASTLEGAR_020	River	Galway County Council	SAC;	Poor	Poor	Poor	Good	2022-2027	At risk	Nutrients, Organic	Ag, Unknown, UWW	Castlegar	LAWPRO, Restoration	<a href="#">View WB Page</a>	<a href="#">View WB on EPA Water Map</a>
26D	IE_SH_26C090740	Cullaghbeg_010	River	Roscommon County Council		Unassigned	Moderate	Moderate	Good	2022-2027	Review			Lower Suck	LAWPRO, Restoration	<a href="#">View WB Page</a>	<a href="#">View WB on EPA Water Map</a>
26D	IE_SH_26C170400	CUILLEEN STREAM_010	River	Roscommon County Council		Good	Moderate	Poor	Good	2022-2027	At risk	Sediment, Nutrients	Ag	Lower Suck	LAWPRO, Restoration	<a href="#">View WB Page</a>	<a href="#">View WB on EPA Water Map</a>
26D	IE_SH_26C210200	CLOONFLOWER STREAM_010	River	Roscommon County Council	SAC;	Good	Good	Good	Good	2021 or earlier	Not at risk			Upper Suck	LAWPRO, Restoration	<a href="#">View WB Page</a>	<a href="#">View WB on EPA Water Map</a>
26D	IE_SH_26C520790	CLOONROUGHAN_010	River	Roscommon County Council	SAC;	Unassigned	High	Good	Good	2021 or earlier	Review			Upper Suck	LAWPRO, Restoration	<a href="#">View WB Page</a>	<a href="#">View WB on EPA Water Map</a>
26D	IE_SH_26D010200	DERRYHIPPOO_010	River	Galway County Council		Poor	Poor	Poor	Good	2022-2027	At risk	Hydrological, Morphological	Ag, HYMO, For, Peat	Derryhippo	LAWPRO, Restoration	<a href="#">View WB Page</a>	<a href="#">View WB on EPA Water Map</a>
26D	IE_SH_26D070400	DERRYMULLAN STREAM_010	River	Galway County Council		Good	Moderate	Good	Good	2021 or earlier	Not at risk			Lower Suck	LAWPRO, Restoration	<a href="#">View WB Page</a>	<a href="#">View WB on EPA Water Map</a>
26D	IE_SH_26D070700	DERRYMULLAN STREAM_020	River	Galway County Council		Moderate	Moderate	Moderate	Good	2022-2027	At risk	UnknownImpactType	Unknown	Lower Suck	LAWPRO, Restoration	<a href="#">View WB Page</a>	<a href="#">View WB on EPA Water Map</a>
26D	IE_SH_26F050050	FRANCIS_010	River	Roscommon County Council	SAC; SPA;	Good	Good	Good	Good	2021 or earlier	Not at risk			Upper Suck	LAWPRO, Restoration	<a href="#">View WB Page</a>	<a href="#">View WB on EPA Water Map</a>
26D	IE_SH_26F050300	FRANCIS_020	River	Roscommon County Council		Good	Good	Moderate	Good	2022-2027	At risk	Nutrients	UR	Upper Suck	LAWPRO, Restoration	<a href="#">View WB Page</a>	<a href="#">View WB on EPA Water Map</a>

26D	IE_SH_26I030040	ISLAND_010	River	Roscommon County Council		Moderate	Moderate	Moderate	Good	2022-2027	At risk	Morphological, Organic	Ag, HYMO	Island	LAWPRO, Restoration	<a href="#">View WB Page</a>	<a href="#">View WB on EPA Water Map</a>
26D	IE_SH_26I030100	ISLAND_020	River	Roscommon County Council		Good	Good	Good	Good	2021 or earlier	Not at risk			Island	LAWPRO, Restoration	<a href="#">View WB Page</a>	<a href="#">View WB on EPA Water Map</a>
26D	IE_SH_26I030400	ISLAND_030	River	Galway County Council	SAC;	Good	Good	Good	High	2022-2027	At risk	Nutrients, Organic	UWW	Island	LAWPRO, Restoration	<a href="#">View WB Page</a>	<a href="#">View WB on EPA Water Map</a>
26D	IE_SH_26K010050	KILLIAN_010	River	Galway County Council	SAC;	Good	Good	Good	Good	2021 or earlier	Not at risk			Castlegar	LAWPRO, Restoration	<a href="#">View WB Page</a>	<a href="#">View WB on EPA Water Map</a>
26D	IE_SH_26K010100	KILLIAN_020	River	Galway County Council	SAC;	Moderate	Good	Good	Good	2021 or earlier	Review			Castlegar	LAWPRO, Restoration	<a href="#">View WB Page</a>	<a href="#">View WB on EPA Water Map</a>
26D	IE_SH_26K010300	KILLIAN_030	River	Galway County Council	SAC;	High	High	Good	High	2022-2027	At risk	UnknownImpactType	Unknown	Castlegar	LAWPRO, Restoration	<a href="#">View WB Page</a>	<a href="#">View WB on EPA Water Map</a>
26D	IE_SH_26K040200	KILLEGLAN_010	River	Roscommon County Council		Poor	Moderate	Good	Good	2021 or earlier	Not at risk			Lower Suck	LAWPRO, Restoration	<a href="#">View WB Page</a>	<a href="#">View WB on EPA Water Map</a>
26D	IE_SH_26K050940	Killaderry stream_010	River	Galway County Council	SPA;	Unassigned	Moderate	Moderate	Good	2022-2027	Review			Lower Suck	LAWPRO, Restoration	<a href="#">View WB Page</a>	<a href="#">View WB on EPA Water Map</a>
26D	IE_SH_26K080460	KILLEGAN TRIB NORTH_010	River	Roscommon County Council		Unassigned	Moderate	Good	Good	2021 or earlier	Review			Lower Suck	LAWPRO, Restoration	<a href="#">View WB Page</a>	<a href="#">View WB on EPA Water Map</a>
26D	IE_SH_26L070200	LAURENCETOWN STREAM_010	River	Galway County Council		Unassigned	Moderate	Moderate	Good	2022-2027	Not at risk			Ballinure	LAWPRO, Restoration	<a href="#">View WB Page</a>	<a href="#">View WB on EPA Water Map</a>
26D	IE_SH_26L070500	LAURENCETOWN STREAM_020	River	Galway County Council		Bad	Poor	Poor	Good	2022-2027	At risk	Nutrients, Organic	Ag, Ind	Ballinure	LAWPRO, Restoration	<a href="#">View WB Page</a>	<a href="#">View WB on EPA Water Map</a>
26D	IE_SH_26L530780	LUGHANAGH_010	River	Galway County Council	SPA;	Unassigned	Good	Good	Good	2021 or earlier	Review			Lower Suck	LAWPRO, Restoration	<a href="#">View WB Page</a>	<a href="#">View WB on EPA Water Map</a>
26D	IE_SH_26P040810	POLLYNOON_010	River	Galway County Council	SAC;	Unassigned	Good	Good	Good	2021 or earlier	Review			Island	LAWPRO, Restoration	<a href="#">View WB Page</a>	<a href="#">View WB on EPA Water Map</a>
26D	IE_SH_26S030040	SHIVEN (SOUTH)_010	River	Galway County Council		Moderate	Moderate	Moderate	Good	2022-2027	At risk	Morphological, Nutrients	Ag	Castlegar	LAWPRO, Restoration	<a href="#">View WB Page</a>	<a href="#">View WB on EPA Water Map</a>
26D	IE_SH_26S030100	SHIVEN (SOUTH)_020	River	Galway County Council	SAC;	Good	Moderate	Good	Good	2021 or earlier	Not at risk			Castlegar	LAWPRO, Restoration	<a href="#">View WB Page</a>	<a href="#">View WB on EPA Water Map</a>
26D	IE_SH_26S030200	SHIVEN (SOUTH)_030	River	Galway County Council	SAC;	Good	Good	Moderate	Good	2022-2027	At risk	UnknownImpactType	Unknown	Castlegar	LAWPRO, Restoration	<a href="#">View WB Page</a>	<a href="#">View WB on EPA Water Map</a>
26D	IE_SH_26S030300	SHIVEN (SOUTH)_040	River	Galway County Council		Good	Good	Good	Good	2021 or earlier	Not at risk			Castlegar	LAWPRO, Restoration	<a href="#">View WB Page</a>	<a href="#">View WB on EPA Water Map</a>
26D	IE_SH_26S030400	SHIVEN (SOUTH)_050	River	Galway County Council	SPA;	Good	Good	Good	High	2022-2027	At risk	Hydrological, Morphological	HYMO	Castlegar	LAWPRO, Restoration	<a href="#">View WB Page</a>	<a href="#">View WB on EPA Water Map</a>
26D	IE_SH_26S030820	SHIVEN (SOUTH)_060	River	Galway County Council	SPA;	Unassigned	Good	Good	Good	2021 or earlier	Not at risk			Castlegar	LAWPRO, Restoration	<a href="#">View WB Page</a>	<a href="#">View WB on EPA Water Map</a>
26D	IE_SH_26S040100	SMAGHRAAN_010	River	Roscommon County Council		Poor	Poor	Poor	Good	2022-2027	At risk	Morphological, Nutrients	Ag, For	Smaghraan	LAWPRO, Restoration	<a href="#">View WB Page</a>	<a href="#">View WB on EPA Water Map</a>
26D	IE_SH_26S040200	SMAGHRAAN_020	River	Roscommon County Council		Good	Poor	Good	Good	2021 or earlier	Not at risk			Smaghraan	LAWPRO, Restoration	<a href="#">View WB Page</a>	<a href="#">View WB on EPA Water Map</a>
26D	IE_SH_26S050100	SPRINGFIELD_010	River	Galway County Council	SAC;	Good	Good	Good	Good	2021 or earlier	Not at risk			Island	LAWPRO, Restoration	<a href="#">View WB Page</a>	<a href="#">View WB on EPA Water Map</a>
26D	IE_SH_26S050200	SPRINGFIELD_020	River	Galway County Council		Good	Good	Good	Good	2021 or earlier	Review			Island	LAWPRO, Restoration	<a href="#">View WB Page</a>	<a href="#">View WB on EPA Water Map</a>
26D	IE_SH_26S070050	SUCK_010	River	Roscommon County Council		Moderate	Good	Moderate	Good	2022-2027	At risk	Sediment, Nutrients, Organic	Ag, Peat	Upper Suck	LAWPRO, Restoration	<a href="#">View WB Page</a>	<a href="#">View WB on EPA Water Map</a>
26D	IE_SH_26S070100	SUCK_020	River	Roscommon County Council	SAC;	Good	High	Good	High	2022-2027	At risk	Morphological	HYMO	Upper Suck	LAWPRO, Restoration	<a href="#">View WB Page</a>	<a href="#">View WB on EPA Water Map</a>
26D	IE_SH_26S070300	SUCK_030	River	Roscommon County Council	SAC;	Moderate	Poor	Poor	Good	2022-2027	At risk	Hydrological, Morphological, Nutrients, Organic	Ag, HYMO	Upper Suck	LAWPRO, Restoration	<a href="#">View WB Page</a>	<a href="#">View WB on EPA Water Map</a>
26D	IE_SH_26S070400	SUCK_040	River	Roscommon County Council		High	High	Good	High	2022-2027	At risk	Morphological	HYMO	Upper Suck	LAWPRO, Restoration	<a href="#">View WB Page</a>	<a href="#">View WB on EPA Water Map</a>
26D	IE_SH_26S070500	SUCK_050	River	Roscommon County Council	SAC;	Good	Good	Good	Good	2021 or earlier	Not at risk			Upper Suck	LAWPRO, Restoration	<a href="#">View WB Page</a>	<a href="#">View WB on EPA Water Map</a>
26D	IE_SH_26S070600	SUCK_060	River	Galway County Council	DWPA; SAC;	Good	Good	Good	Good	2021 or earlier	Not at risk			Island	LAWPRO, Restoration	<a href="#">View WB Page</a>	<a href="#">View WB on EPA Water Map</a>
26D	IE_SH_26S070650	SUCK_070	River	Roscommon County Council		Good	Good	Good	Good	2021 or earlier	Not at risk			Suck_Glinsk Creggs GWS	NFGWS, Protection	<a href="#">View WB Page</a>	<a href="#">View WB on EPA Water Map</a>
26D	IE_SH_26S070700	SUCK_080	River	Roscommon County Council	SPA;	Good	Moderate	Moderate	Good	2022-2027	At risk	Sediment, Morphological, Nutrients, Organic	Ag, HYMO	Suck_Castlestrange GWS	NFGWS, Restoration	<a href="#">View WB Page</a>	<a href="#">View WB on EPA Water Map</a>
26D	IE_SH_26S070870	SUCK_090	River	Roscommon County Council	SPA;	Good	Moderate	Poor	Good	2022-2027	At risk	Sediment, Morphological, Nutrients, Organic	HYMO, Ag			<a href="#">View WB Page</a>	<a href="#">View WB on EPA Water Map</a>
26D	IE_SH_26S070900	SUCK_100	River	Roscommon County Council	SPA;	Good	Good	Moderate	Good	2022-2027	At risk	Nutrients	Unknown			<a href="#">View WB Page</a>	<a href="#">View WB on EPA Water Map</a>
26D	IE_SH_26S071000	SUCK_110	River	Galway County Council	SPA;	Good	Good	Poor	Good	2022-2027	At risk	Chemical, UnknownImpactType	Unknown			<a href="#">View WB Page</a>	<a href="#">View WB on EPA Water Map</a>
26D	IE_SH_26S071100	SUCK_120	River	Roscommon County Council	SPA;	Moderate	Moderate	Moderate	Good	2022-2027	At risk	Hydrological, Morphological	HYMO	Lower Suck	LAWPRO, Restoration	<a href="#">View WB Page</a>	<a href="#">View WB on EPA Water Map</a>
26D	IE_SH_26S071200	SUCK_130	River	Roscommon County Council	SPA;	Good	Good	Good	Good	2021 or earlier	Not at risk			Lower Suck	LAWPRO, Restoration	<a href="#">View WB Page</a>	<a href="#">View WB on EPA Water Map</a>
26D	IE_SH_26S071400	SUCK_140	River	Galway County Council	DWPA; SPA;	Moderate	Moderate	Moderate	Good	2022-2027	At risk	Hydrological, Morphological	HYMO	Lower Suck	LAWPRO, Restoration	<a href="#">View WB Page</a>	<a href="#">View WB on EPA Water Map</a>
26D	IE_SH_26S071500	SUCK_150	River	Galway County Council	SPA;	Moderate	Moderate	Moderate	Good	2022-2027	At risk	Hydrological, Morphological	HYMO, Peat	Lower Suck	LAWPRO, Restoration	<a href="#">View WB Page</a>	<a href="#">View WB on EPA Water Map</a>
26D	IE_SH_26S071550	SUCK_160	River	Galway County Council	SPA;	Unassigned	Poor	Good	Good	2021 or earlier	Review			Lower Suck	LAWPRO, Restoration	<a href="#">View WB Page</a>	<a href="#">View WB on EPA Water Map</a>
26D	IE_SH_26T030300	TERMON STREAM_010	River	Roscommon County Council	SAC; SPA;	Good	Good	Good	Good	2021 or earlier	Not at risk			Upper Suck	LAWPRO, Restoration	<a href="#">View WB Page</a>	<a href="#">View WB on EPA Water Map</a>