



Cycle 3

HA 36 Erne Catchment Report, May 2024

Introduction

Water Quality
Summary

High Status
Objectives

Water Quality
Changes

WFD Risk

Significant
Pressures

Action

Summary
Information

Introduction

This report provides an overview of the water quality in the Erne Catchment and the pressures impacting on water quality. This report is based on data up to 2021. The latest water quality data, dashboards and maps throughout this report are available on catchments.ie and [EPA Water Map](https://epa.gov.ie/water-map).

The Erne Catchment includes the area drained by the River Erne and all streams entering tidal water between Aughrus Point and Kildoney Point, Co. Donegal. This is a cross border catchment with a surface area of 4,415km², 2,512km² of which is located within the Republic of Ireland. The largest urban centre is Cavan Town. The other main urban centres are Bundoran, Ballyshannon, Clones, Ballybay, Cootehill and Belturbet.

The Erne Catchment is divided into 28 subcatchments and has 259 surface water bodies and 66 groundwater bodies.

[View the Erne Catchment
on the EPA Water Map](https://epa.gov.ie/water-map)

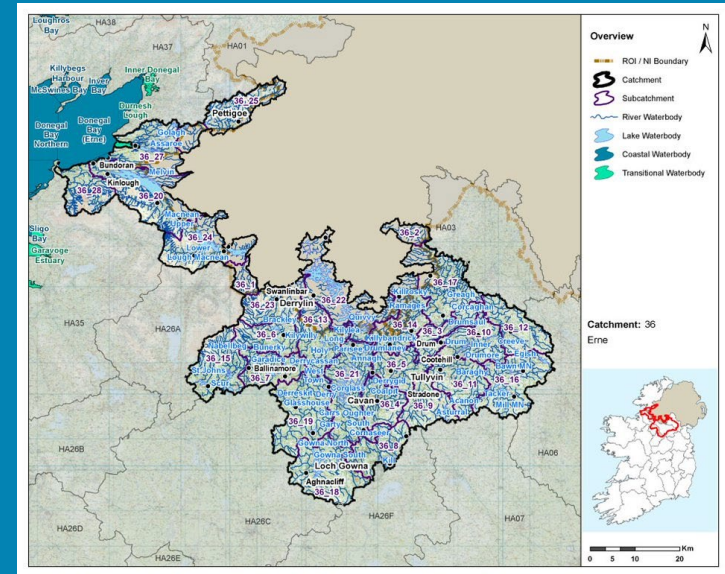
Previous Catchment Assessments

Previous catchment assessments, which provide additional historic context and information, are archived on catchments.ie:

- [Cycle 2 Catchment Assessments – published September 2018](#)
- [Cycle 3 Draft Catchment Assessments – published September 2021](#)

Online Dashboards

Links to online dashboards are provided in this report – these numbers may vary from those in this document as time progress and the online dashboards are updated based on the latest data and scientific assessments.



Overview of Subcatchments in the Erne Catchment

Water Quality Summary

Introduction

Water Quality Summary

High Status Objectives

Water Quality Changes

WFD Risk

Significant Pressures

Action

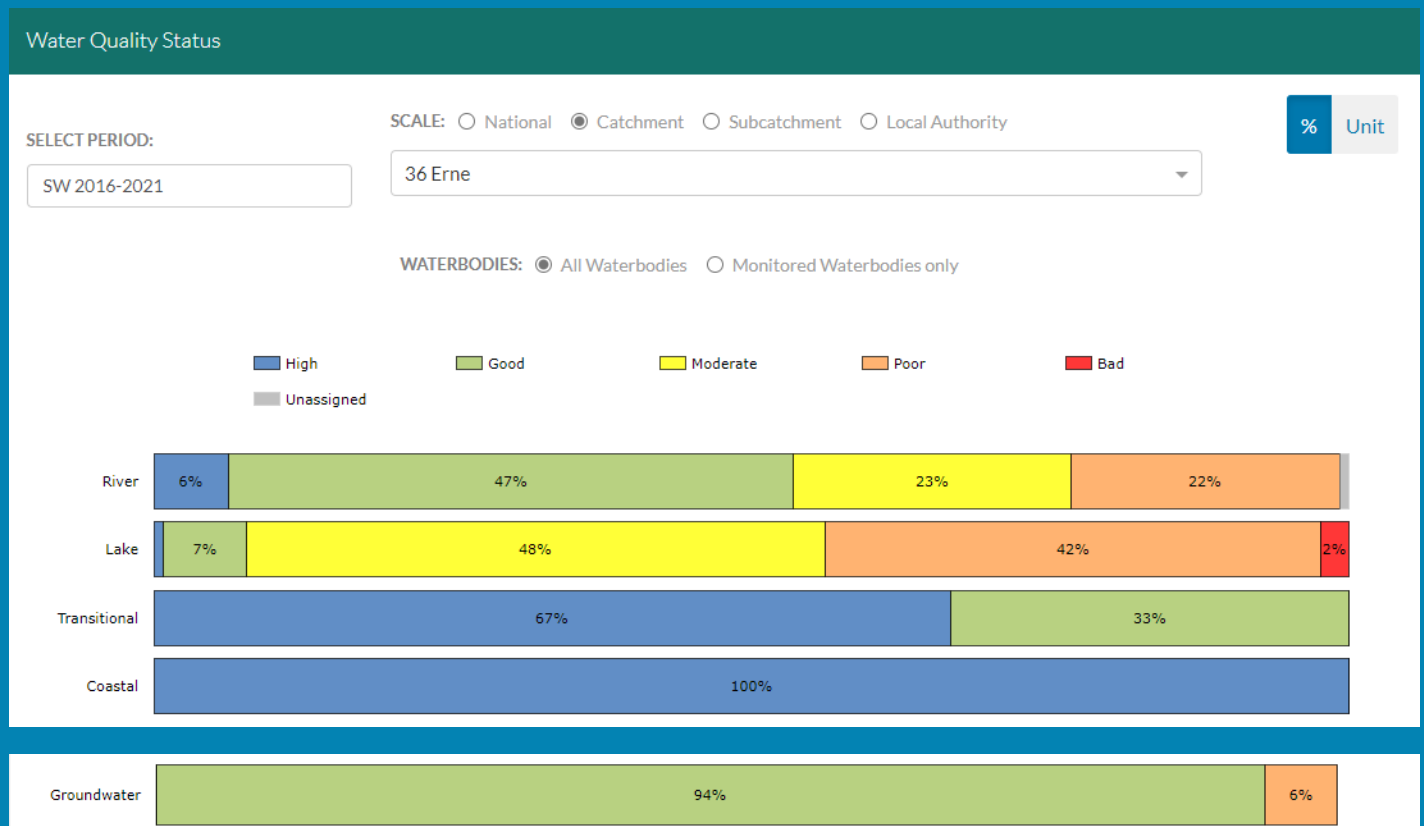
Summary Information

The dashboard below provides a breakdown of water quality status for surface and groundwater bodies in the Erne Catchment.

A total of 32% of surface waterbodies were at Good or High Ecological Status in the 2016-2021 monitoring period. Ninety-four percent of groundwater bodies were at Good status.

Go to EPA Water Maps for WFD Status

[EPA Water Map](#)



Water quality status 2016-2021 for the Erne Catchment.

View Online Dashboard: <https://www.catchments.ie/data/#/dashboard/waterquality>

High Status Objective Waterbodies

Introduction

High status waters are prioritised for protection and action.

There are seven waterbodies with a **High Ecological Status Objective** (HSO) in the Erne Catchment, with four currently not meeting their environmental objective of High.

Water Quality Summary

Grants for septic tank upgrades may be available in high status objective catchment areas - you can learn more and check your Eircode for eligibility here: <https://www.gov.ie/en/publication/6cc1e-domestic-waste-water-treatment-systems-septic-tanks>

High Status Objectives

[View HSO river waterbodies in this catchment.](#)

See **Status and Risk / High Status Objective** for other waterbody types.

Water Quality Changes

Water Quality Status - High Status Objective Waterbodies

SELECT TYPE:

All Surface Waters

SCALE: Catchment Local Authority

36 Erne

	SW 2007-2009	SW 2010-2012	SW 2010-2015	SW 2013-2018	SW 2016-2021
AGHACASHLAUN_010 (River)	High	High	High	Good	Good
BLACKWATER (NEWTOWNGORE)_010 (River)	Good	Good	High	Moderate	High
DUFF_010 (River)	High	High	Good	Good	Good
DUFF_020 (River)	High	High	Good	High	Good
GLENANIFF_010 (River)	High	High	High	Good	High
SWANLINBAR_010 (River)	High	High	High	High	High
WOODFORD (CAVAN)_020 (River)	Good	High	High	High	Good

WFD Risk

Significant Pressures

Action

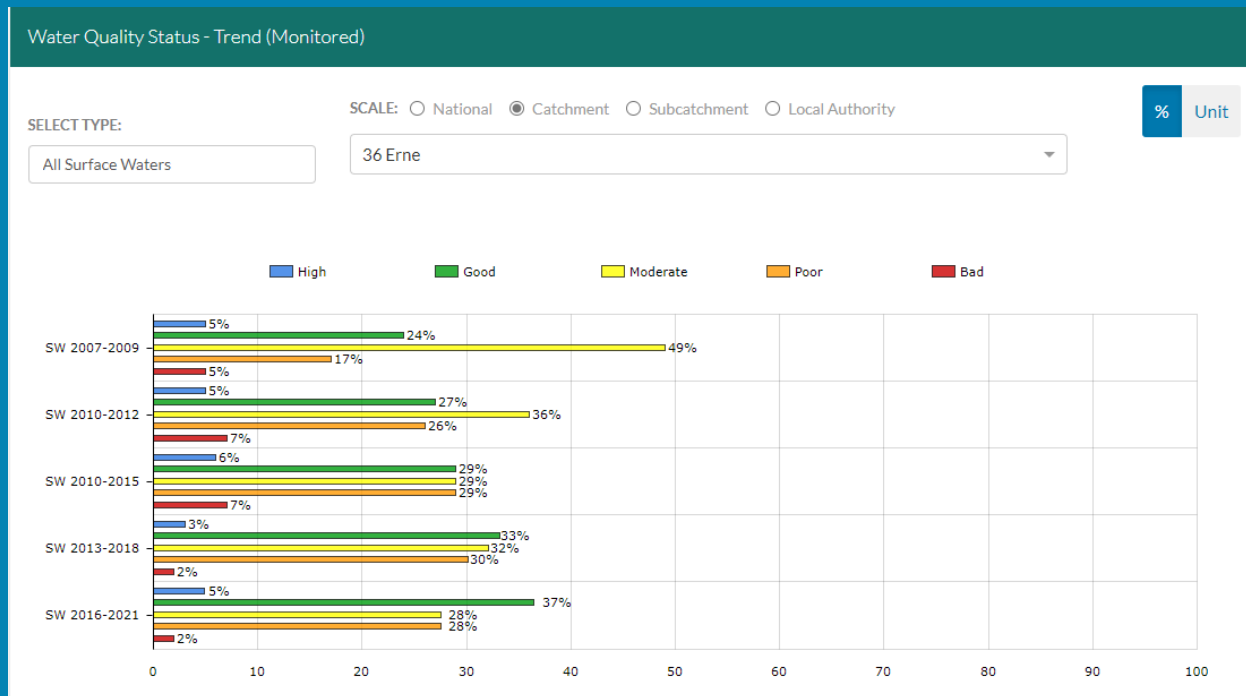
Summary Information

Water quality status for High Ecological Status Objective waterbodies.

View Online Dashboard: <https://www.catchments.ie/data/#/dashboard/waterquality>

Water Quality Changes

Below illustrates the changes in ecological status in monitored surface waterbodies over the last five monitoring cycles in the Erne Catchment. Nationally while there have been improvements in some waterbodies, these have been offset by declines elsewhere.



Ecological status trends for monitored surface waterbodies over the last five monitoring cycles in the Erne Catchment. **View online dashboard:** <https://www.catchments.ie/data/#/dashboard/waterquality>

A total of 142 (43%) waterbodies are currently meeting their environmental objective of Good or High Ecological Status.

	Total	Achieving Environmental Objectives (2016-2021)	High Status Environmental Objectives Waterbodies	Achieving High Status Environmental Objectives (2016-2021)
Rivers	129	65 (50%)	7	3 (43%)
Canals	-	-	-	-
Lakes	130	10 (8%)	-	-
Transitional	3	3 (100%)	-	-
Coastal	2	2 (100%)	-	-
Groundwater	66	62 (94%)	-	-

Introduction

Water Quality Summary

High Status Objectives

Water Quality Changes

WFD Risk

Significant Pressures

Action

Summary Information

WFD Risk

Introduction

Water Quality Summary

High Status Objectives

Water Quality Changes

WFD Risk

Significant Pressures

Action

Summary Information

A total of 100 (30%) waterbodies are *At Risk* of not meeting their environmental objective in the Erne Catchment, while 118 (36%) are under *Review* and 112 (34%) are *Not At Risk*.

Go to [EPA Water Map](#) to see WFD Risk for this catchment



WFD Risk for the Erne Catchment based on 2016-2021 data.

View Online Dashboard: <https://www.catchments.ie/data/#/dashboard/waterquality>

There is currently one heavily modified water body (HMWB) in the Erne Catchment, *Assaroe*. It is currently under *Review*.

There are no artificial waterbodies in the Erne Catchment.

The [EPA's characterisation outcome report](#) has more information on WFD Risk

Introduction

Water Quality
Summary

High Status
Objectives

Water Quality
Changes

WFD Risk

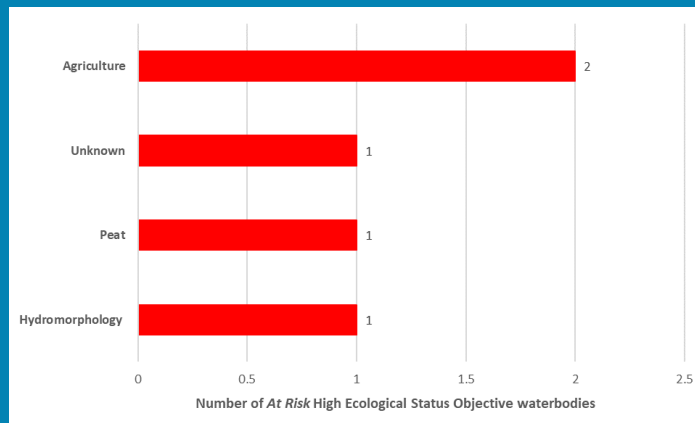
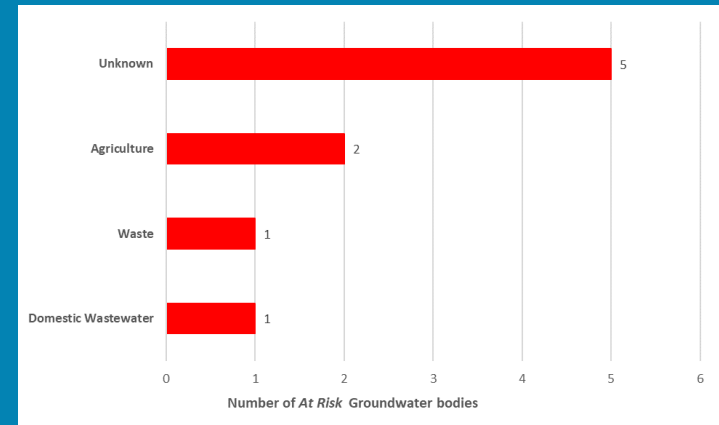
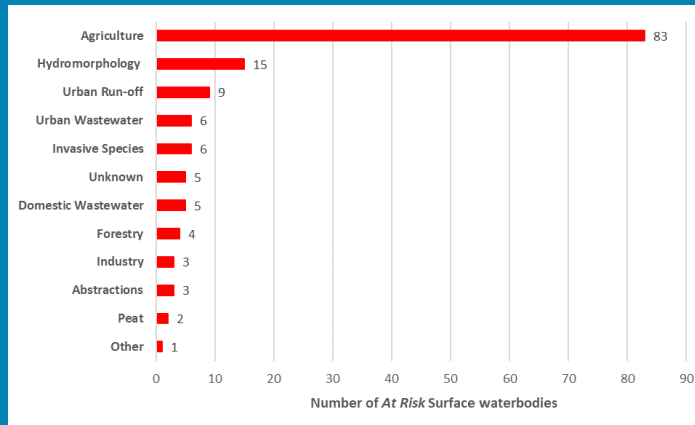
Significant
Pressures

Action

Summary
Information

Significant Pressures driving risk

Significant pressure types impacting the 94 *At Risk* surface waterbodies and six groundwater bodies are broken down in the figures below, including significant pressure information for the four *At Risk* High Ecological Status Objective waterbodies.



The issues driven by these pressures are mainly nutrient pollution, organic pollution and sediment impacts for surface water and nutrient pollution, chemical quality diminution for surface water and chemical pollution for groundwaters. For more information, see <https://www.catchments.ie/data/#/dashboard/pressure?k=i351zs>.

Go to the Summary Information section to get significant pressure and issue data for At Risk waterbodies within the Erne Catchment.

Click [here](#) for more information on significant pressures

Significant Pressures

Introduction

Agriculture is the top significant pressure impacting 85% of the 100 *At Risk* waterbodies within the Erne Catchment, followed by 15% impacted by Hydromorphological Pressures and 9% by Urban Run-off.

Water Quality Summary

High Status Objectives

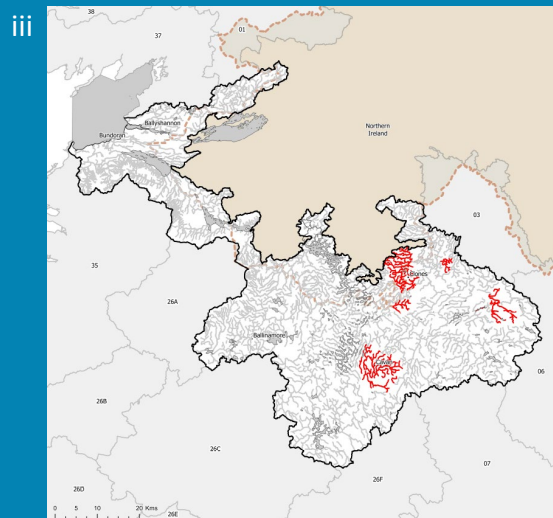
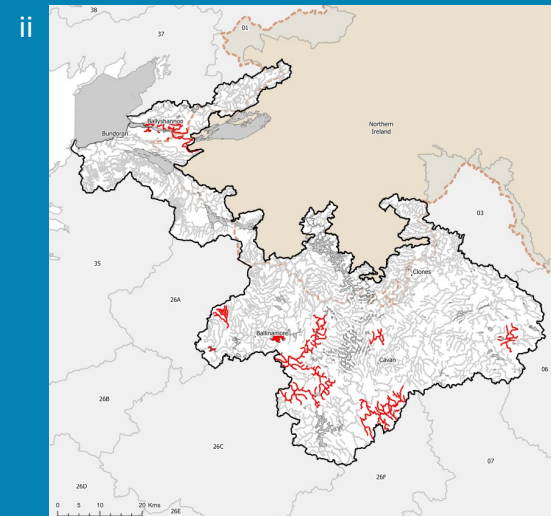
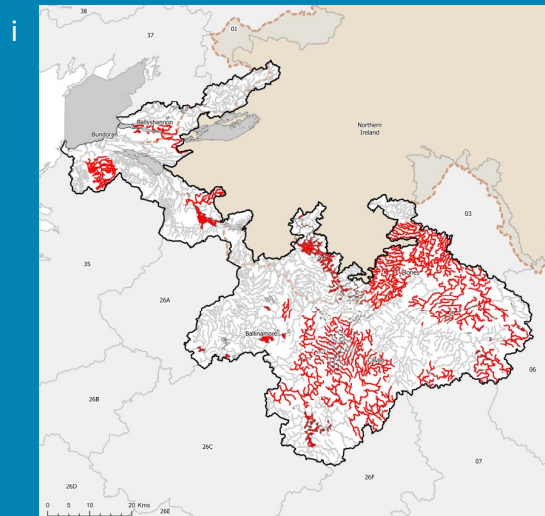
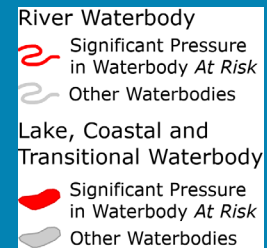
Water Quality Changes

WFD Risk

Significant Pressures

Action

Summary Information



The catchments.ie dashboards will show all significant pressures identified for this catchment.

www.catchments.ie/data/#/dashboard/pressure

Go to the [EPA Water Maps](#) for the locations of all significant pressure types identified for this catchment

Locations of At Risk surface waterbodies impacted by i) Agriculture, ii) Hydromorphological Pressures and iii) Urban Run-off.

Introduction

Water Quality
Summary

High Status
Objectives

Water Quality
Changes

WFD Risk

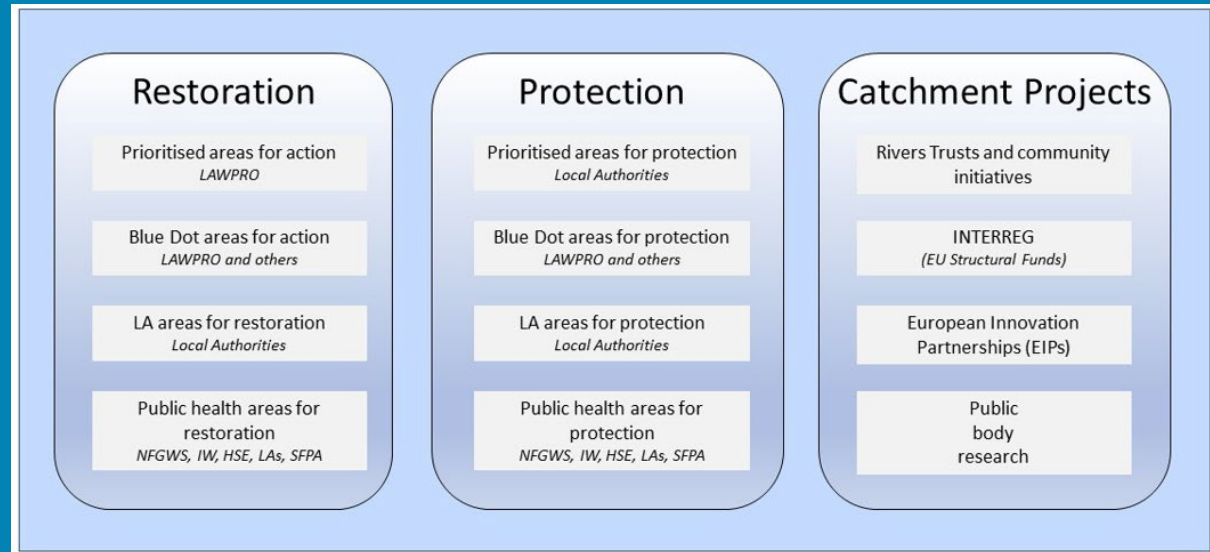
Significant
Pressures

Action

Summary
Information

Priority Areas for Action

A number of waterbodies have been prioritised through the selection of Areas for Action. There were 11 Priority Areas for Action identified for the second river basin management planning cycle in the Erne Catchment. This has increased to a total of 18 Areas for Restoration, five Areas for Protection and one Catchment Project for the third cycle. ***Go to the summary information section to get Area for Action information for waterbodies within the Erne Catchment.***



Types of Areas for Action under the third cycle River Basin Management Plan

- View the current progress of Areas for Action and Summary Reports completed by LAWPRO, on [catchments.ie](https://www.catchments.ie) and the EPA Water Map:
 - <https://www.catchments.ie/data/#/areaforaction>
 - https://gis.epa.ie/EPAMaps/default?easting=?&northing=?&lid=EPA:WFD_AreasForAction
- LAWPRO have also published detailed desktop studies on Prioritised Areas for Action (PAAs) which are available their website: <https://lawaters.ie/desktop-studies/>
- Information on Areas for Action for the second cycle is available in Cycle 2 Catchment Assessments which have been archived on [catchments.ie](https://www.catchments.ie/download/cycle-2-catchment-assessments-published-september-2018/): <https://www.catchments.ie/download/cycle-2-catchment-assessments-published-september-2018/>

Introduction

Water Quality
Summary

High Status
Objectives

Water Quality
Changes

WFD Risk

Significant
Pressures

Action

Summary
Information

Summary information for all waterbodies in the Erne Catchment

The next page provides a table with a breakdown of key information for all waterbodies in this catchment. The key is provided below. Additional information for each waterbody is available on <https://www.catchments.ie/data>, including a breakdown of status, a monitoring schedule for monitored waterbodies and downloadable chemistry results, where available.

Protected Area categories	BW: Bathing Water DW: Drinking Water Fish: Salmonid Waters NSA: Nutrient Sensitive Areas SAC: Special Area of Conservation, Natura 2000 (water dependent habitats and species) SF: Shellfish Area SPA: Special Area of Protection, Natura 2000 (water dependent habitat and species)
Significant pressure* types categories <i>* For At Risk waterbodies only</i>	Ab: Abstractions Ag: Agriculture Aq: Aquaculture At: Atmospheric DWW: Domestic Wastewater For: Forestry HPS: Historically polluted sites HYMO: Hydromorphology Ind: Industry IS: Invasive Species M+Q: Mines and Quarries Peat: Peat Drainage and Extraction UR: Urban Run-Off UWW: Urban Wastewater Was: Waste WT: Water Treatment

Catchment Code	Waterbody (WB) Code	WB Name	WB Type	Local Authority	Protected Area	Status 10-15	Status 13-18	Status 16-21	Environmental Objective	Environmental Objective Date	WFD Risk 16-21	Significant Issue(s)	Significant Pressure(s)	Area for Action (AFA)	AFA (lead, type)	Link to WB page on catchments.ie	Link to WB on EPA Water Map
35, 36, 37	IE_NW_010_0000	Donegal Bay (Erne)	Coastal	Donegal County Council	BW; SAC; SPA; SF;	Unassigned	High	High	Good	2021 or earlier	Not at risk					View WB Page	View WB on EPA Water Map
36	IE_NW_020_0000	Bundoran Bay	Coastal	Donegal County Council	BW; SAC; SPA;	Unassigned	High	High	Good	2021 or earlier	Review					View WB Page	View WB on EPA Water Map
36	GBNI4NW008	Ederney	Groundwater	Donegal County Council	DWPA	Good	Good	Good	Good	2021 or earlier	Not at risk					View WB Page	View WB on EPA Water Map
36	GBNI4NW020	Belcoo Boho	Groundwater	Cavan County Council	DWPA	Good	Poor	Good	Good	2021 or earlier	Not at risk					View WB Page	View WB on EPA Water Map
36	GBNI4NW022	Florence Court- Drumgormley	Groundwater	Cavan County Council	DWPA	Good	Good	Good	Good	2021 or earlier	Not at risk					View WB Page	View WB on EPA Water Map
26F, 36, 6, 7	IE_EA_G_006	Bailieborough	Groundwater	Cavan County Council	DWPA; SAC	Good	Good	Good	Good	2021 or earlier	Not at risk					View WB Page	View WB on EPA Water Map
3, 36	IE_NB_G_013	Tydavnet	Groundwater	Monaghan County Council	DWPA	Good	Good	Good	Good	2021 or earlier	Not at risk					View WB Page	View WB on EPA Water Map
36, 37	IE_NW_G_018	Kildoney North	Groundwater	Donegal County Council	DWPA; SAC	Good	Good	Good	Good	2021 or earlier	Not at risk					View WB Page	View WB on EPA Water Map
26A, 35, 36	IE_NW_G_042	Glenfarne	Groundwater	Leitrim County Council	DWPA; SAC	Good	Good	Good	Good	2021 or earlier	Not at risk					View WB Page	View WB on EPA Water Map
35, 36	IE_NW_G_043	Glenaniff	Groundwater	Leitrim County Council	DWPA; SAC	Good	Good	Good	Good	2021 or earlier	Not at risk					View WB Page	View WB on EPA Water Map
35, 36	IE_NW_G_045	Largydonnell	Groundwater	Leitrim County Council	DWPA; SAC	Good	Good	Good	Good	2021 or earlier	Not at risk					View WB Page	View WB on EPA Water Map
35, 36	IE_NW_G_046	Ballaghnatrillick	Groundwater	Leitrim County Council	DWPA; SAC	Good	Good	Good	Good	2021 or earlier	Not at risk					View WB Page	View WB on EPA Water Map
1, 36, 37, 38	IE_NW_G_047	Donegal South	Groundwater	Donegal County Council	DWPA; SAC	Good	Good	Good	Good	2021 or earlier	Not at risk					View WB Page	View WB on EPA Water Map
26C, 26F, 3, 36, 6, 7	IE_NW_G_061	Cavan	Groundwater	Cavan County Council	DWPA; SAC	Good	Good	Good	Good	2021 or earlier	Not at risk					View WB Page	View WB on EPA Water Map
26C, 36	IE_NW_G_062	Killashandra	Groundwater	Cavan County Council	DWPA; SAC	Good	Good	Good	Good	2021 or earlier	Not at risk					View WB Page	View WB on EPA Water Map
36, 37	IE_NW_G_071	Donegal-Ballintra	Groundwater	Donegal County Council	DWPA; SAC	Good	Good	Good	Good	2021 or earlier	Not at risk					View WB Page	View WB on EPA Water Map
36, 37	IE_NW_G_072	Ballyshannon	Groundwater	Donegal County Council	DWPA; SAC	Good	Good	Good	Good	2021 or earlier	Not at risk					View WB Page	View WB on EPA Water Map
35, 36	IE_NW_G_073	Tievebaun	Groundwater	Leitrim County Council	DWPA; SAC	Good	Good	Good	Good	2021 or earlier	Not at risk					View WB Page	View WB on EPA Water Map
35, 36	IE_NW_G_074	Kiltyclogher	Groundwater	Leitrim County Council	DWPA	Good	Good	Good	Good	2021 or earlier	Not at risk					View WB Page	View WB on EPA Water Map
36	IE_NW_G_080	Industrial Facility (P0333-01)	Groundwater	Leitrim County Council	DWPA	Good	Good	Good	Good	2021 or earlier	Not at risk					View WB Page	View WB on EPA Water Map
36	IE_NW_G_095	GWDTE-Dunmuckrum Turlough (SAC002303)	Groundwater	Donegal County Council	DWPA; SAC (GWDTE)	Good	Good	Good	Good	2021 or earlier	Not at risk					View WB Page	View WB on EPA Water Map
36, 37	IE_NW_G_100	Waste Facility (W0024-03)	Groundwater	Donegal County Council	DWPA; SAC	Poor	Poor	Poor	Good	2022-2027	At risk	ChemicalQualityDiminution ForSW, Nutrients	Was			View WB Page	View WB on EPA Water Map
36	IE_NW_G_101	Historic Waste Facility (S22-02454)	Groundwater	Monaghan County Council	DWPA	Good	Good	Good	Good	2021 or earlier	Not at risk					View WB Page	View WB on EPA Water Map
26A, 26B, 26C, 26D, 26E, 34, 36	IE_SH_G_048	Carrick on Shannon	Groundwater	Roscommon County Council	DWPA; SAC	Good	Good	Good	Good	2021 or earlier	Not at risk					View WB Page	View WB on EPA Water Map
26A, 26B, 26C, 34, 35, 36	IE_SH_G_073	Curlew Mountains	Groundwater	Sligo County Council	DWPA; SAC	Good	Good	Good	Good	2021 or earlier	Not at risk					View WB Page	View WB on EPA Water Map
26A, 35, 36	IE_SH_G_105	Geevagh	Groundwater	Sligo County Council	DWPA	Good	Good	Good	Good	2021 or earlier	At risk	ChemicalQualityDiminution ForSW, Nutrients	Unknown, Ag			View WB Page	View WB on EPA Water Map
25A, 25B, 26C, 26E, 26F, 26G, 36, 7	IE_SH_G_110	Inny	Groundwater	Westmeath County Council	DWPA; SAC	Good	Good	Good	Good	2021 or earlier	Not at risk					View WB Page	View WB on EPA Water Map
26C, 26E, 26F, 36	IE_SH_G_149	Longford Ballinalee	Groundwater	Longford County Council	DWPA; SAC	Good	Good	Good	Good	2021 or earlier	Not at risk					View WB Page	View WB on EPA Water Map
26C, 36	IE_SH_G_171	Mohill	Groundwater	Leitrim County Council	DWPA; SAC	Good	Good	Good	Good	2021 or earlier	Not at risk					View WB Page	View WB on EPA Water Map
35, 36	IE_WE_G_0044	Drumcliff-Strandhill	Groundwater	Sligo County Council	DWPA; SAC	Good	Good	Good	Good	2021 or earlier	Not at risk					View WB Page	View WB on EPA Water Map
35, 36	IE_WE_G_0055	Killarga	Groundwater	Leitrim County Council	DWPA; SAC	Good	Good	Good	Good	2021 or earlier	Not at risk					View WB Page	View WB on EPA Water Map
35, 36	IE_WE_G_0056	Killarga South	Groundwater	Leitrim County Council	DWPA; SAC	Good	Good	Good	Good	2021 or earlier	Not at risk					View WB Page	View WB on EPA Water Map
35, 36	IE_WE_G_0059	Glenade	Groundwater	Leitrim County Council	DWPA; SAC	Good	Good	Good	Good	2021 or earlier	Not at risk					View WB Page	View WB on EPA Water Map
35, 36	IE_WE_G_0060	Glencar	Groundwater	Leitrim County Council	DWPA; SAC	Good	Good	Good	Good	2021 or earlier	Not at risk					View WB Page	View WB on EPA Water Map
35, 36	IE_WE_G_0062	Grange East	Groundwater	Sligo County Council	DWPA; SAC	Good	Good	Good	Good	2021 or earlier	Not at risk					View WB Page	View WB on EPA Water Map
26A, 35, 36	IE_WE_G_0111	North Belhavel Lough	Groundwater	Leitrim County Council	DWPA; SAC	Good	Good	Good	Good	2021 or earlier	Not at risk					View WB Page	View WB on EPA Water Map
3, 36	IEGBNI_NB_G_007	Aughnacloy	Groundwater	Monaghan County Council	DWPA	Good	Good	Poor	Good	2022-2027	At risk	Chemical	Unknown			View WB Page	View WB on EPA Water Map

3, 36, 6	IEGBNI_NB_G_011	Keady	Groundwater	Monaghan County Council	DWPA	Good	Good	Good	Good	2021 or earlier	Not at risk					View WB Page	View WB on EPA Water Map
3, 36	IEGBNI_NB_G_012	Monaghan Town	Groundwater	Monaghan County Council	DWPA	Good	Good	Good	Good	2021 or earlier	Not at risk					View WB Page	View WB on EPA Water Map
3, 36	IEGBNI_NB_G_014	Knockatallon	Groundwater	Monaghan County Council	DWPA	Good	Good	Poor	Good	2022-2027	At risk	Nutrients	Unknown			View WB Page	View WB on EPA Water Map
3, 36, 6, 7	IEGBNI_NB_G_019	Louth	Groundwater	Louth County Council	DWPA; SAC	Good	Good	Good	Good	2021 or earlier	Not at risk					View WB Page	View WB on EPA Water Map
1, 36, 37	IEGBNI_NW_G_005	Castledearg	Groundwater	Donegal County Council	DWPA; SAC	Good	Good	Good	Good	2021 or earlier	Not at risk					View WB Page	View WB on EPA Water Map
36	IEGBNI_NW_G_009	Pettigo	Groundwater	Donegal County Council	DWPA	Good	Good	Good	Good	2021 or earlier	Not at risk					View WB Page	View WB on EPA Water Map
36	IEGBNI_NW_G_010	Crilly	Groundwater	Donegal County Council	DWPA; SAC	Good	Good	Good	Good	2021 or earlier	Not at risk					View WB Page	View WB on EPA Water Map
1, 36, 37	IEGBNI_NW_G_011	Ballyshannon East	Groundwater	Donegal County Council	DWPA; SAC	Good	Good	Good	Good	2021 or earlier	Not at risk					View WB Page	View WB on EPA Water Map
36	IEGBNI_NW_G_012	Ballyshannon South	Groundwater	Donegal County Council	DWPA	Good	Good	Good	Good	2021 or earlier	Not at risk					View WB Page	View WB on EPA Water Map
36	IEGBNI_NW_G_013	Bundoran	Groundwater	Leitrim County Council	DWPA; SAC	Good	Good	Good	Good	2021 or earlier	Not at risk					View WB Page	View WB on EPA Water Map
35, 36	IEGBNI_NW_G_014	Tullaghan-Lough Melvin	Groundwater	Leitrim County Council	DWPA; SAC	Good	Good	Good	Good	2021 or earlier	Not at risk					View WB Page	View WB on EPA Water Map
36	IEGBNI_NW_G_015	Castlecaldwell Forest	Groundwater	Donegal County Council	DWPA	Good	Good	Good	Good	2021 or earlier	Not at risk					View WB Page	View WB on EPA Water Map
35, 36	IEGBNI_NW_G_017	Kilcoo	Groundwater	Leitrim County Council	DWPA; SAC	Good	Good	Good	Good	2021 or earlier	Not at risk					View WB Page	View WB on EPA Water Map
26A, 36	IEGBNI_NW_G_021	Ballintempo	Groundwater	Leitrim County Council	DWPA	Good	Good	Good	Good	2021 or earlier	Not at risk					View WB Page	View WB on EPA Water Map
3, 36	IEGBNI_NW_G_025	Cooneen Water	Groundwater	Monaghan County Council	DWPA	Good	Good	Poor	Good	2022-2027	At risk	ChemicalQualityDiminution ForSW, Nutrients	Unknown			View WB Page	View WB on EPA Water Map
36	IEGBNI_NW_G_027	Donagh	Groundwater	Monaghan County Council	DWPA	Good	Good	Good	Good	2021 or earlier	Not at risk					View WB Page	View WB on EPA Water Map
3, 36	IEGBNI_NW_G_028	Magheraveely	Groundwater	Monaghan County Council	DWPA	Good	Good	Good	Good	2021 or earlier	Not at risk					View WB Page	View WB on EPA Water Map
36	IEGBNI_NW_G_030	Crom Castle	Groundwater	Cavan County Council	DWPA; SAC	Good	Good	Good	Good	2021 or earlier	Not at risk					View WB Page	View WB on EPA Water Map
26A, 26C, 36	IEGBNI_NW_G_031	Newtown-Ballyconnell	Groundwater	Cavan County Council	DWPA; SAC	Good	Good	Good	Good	2021 or earlier	Not at risk					View WB Page	View WB on EPA Water Map
36	IEGBNI_NW_G_032	Derrylin	Groundwater	Cavan County Council	DWPA; SAC	Good	Good	Good	Good	2021 or earlier	Not at risk					View WB Page	View WB on EPA Water Map
36	IEGBNI_NW_G_033	Slieve Rushen South	Groundwater	Cavan County Council	DWPA	Good	Good	Good	Good	2021 or earlier	Not at risk					View WB Page	View WB on EPA Water Map
36	IEGBNI_NW_G_034	Ballinamore-Swanlinbar	Groundwater	Cavan County Council	DWPA; SAC	Good	Good	Good	Good	2021 or earlier	Not at risk					View WB Page	View WB on EPA Water Map
26A, 36	IEGBNI_NW_G_035	Anierin-Cuilcagh East	Groundwater	Cavan County Council	DWPA; SAC	Good	Good	Good	Good	2021 or earlier	Not at risk					View WB Page	View WB on EPA Water Map
26A, 36	IEGBNI_NW_G_036	Marble Arch	Groundwater	Cavan County Council	DWPA; SAC	Good	Good	Good	Good	2021 or earlier	Not at risk					View WB Page	View WB on EPA Water Map
36	IEGBNI_NW_G_039	Slieve Rushen	Groundwater	Cavan County Council	DWPA	Good	Good	Good	Good	2021 or earlier	Not at risk					View WB Page	View WB on EPA Water Map
26A, 36	IEGBNI_NW_G_040	Claddagh-Swanlinbar	Groundwater	Cavan County Council	DWPA; SAC	Good	Good	Good	Good	2021 or earlier	Not at risk					View WB Page	View WB on EPA Water Map
35, 36	IEGBNI_NW_G_044	Rossinver	Groundwater	Leitrim County Council	DWPA; SAC	Good	Good	Good	Good	2021 or earlier	Not at risk					View WB Page	View WB on EPA Water Map
3, 36	IEGBNI_NW_G_063	Clones	Groundwater	Monaghan County Council	DWPA; SAC	Good	Good	Good	Good	2021 or earlier	At risk	Chemical, ChemicalQualityDiminution ForSW, Nutrients	Ag, DWTS, Unknown			View WB Page	View WB on EPA Water Map
26A, 35, 36	IEGBNI_SH_G_002	Lough Allen Uplands	Groundwater	Leitrim County Council	DWPA; SAC	Good	Good	Good	Good	2021 or earlier	Not at risk					View WB Page	View WB on EPA Water Map
26A, 36	IEGBNI_SH_G_003	Shannon Pot	Groundwater	Cavan County Council	DWPA	Good	Good	Good	Good	2021 or earlier	Not at risk					View WB Page	View WB on EPA Water Map
26A, 36	IEGBNI_SH_G_264	Glenade Dowra	Groundwater	Cavan County Council	DWPA; SAC	Good	Good	Good	Good	2021 or earlier	Not at risk					View WB Page	View WB on EPA Water Map
36	IE_NB_03_51	Greagh	Lake	Monaghan County Council	DWPA;	Unassigned	Moderate	Poor	Good	2022-2027	Review					View WB Page	View WB on EPA Water Map
36	IE_NB_03_71	Corcaghan	Lake	Monaghan County Council		Unassigned	Moderate	Poor	Good	2022-2027	Review					View WB Page	View WB on EPA Water Map
36	IE_NB_03_97	Ballagh	Lake	Monaghan County Council		Unassigned	Moderate	Poor	Good	2022-2027	Review					View WB Page	View WB on EPA Water Map
36	IE_NW_26_736	Fenagh	Lake	Leitrim County Council		Unassigned	Moderate	Moderate	Good	2022-2027	Review					View WB Page	View WB on EPA Water Map
36	IE_NW_35_143	Lattone	Lake	Leitrim County Council		Bad	Unassigned	Good	Good	2021 or earlier	Review			Lough Melvin and Drowes	LAWPRO, Restoration	View WB Page	View WB on EPA Water Map
36	IE_NW_35_160	Melvin	Lake	Leitrim County Council	DWPA; SAC;	Moderate	Moderate	Moderate	Good	2022-2027	At risk	UnknownImpactType	Unknown	Lough Melvin and Drowes	LAWPRO, Restoration	View WB Page	View WB on EPA Water Map
36	IE_NW_36_142	Aghalough	Lake	Donegal County Council	DWPA;	Unassigned	Good	Good	Good	2021 or earlier	Review					View WB Page	View WB on EPA Water Map
36	IE_NW_36_192	Corconnelly	Lake	Monaghan County Council	DWPA;	Moderate	Moderate	Moderate	Good	2022-2027	At risk	Hydrological	Ab			View WB Page	View WB on EPA Water Map
36	IE_NW_36_201	Nabellbeg	Lake	Leitrim County Council	DWPA; SAC;	Unassigned	High	High	Good	2021 or earlier	Not at risk					View WB Page	View WB on EPA Water Map
36	IE_NW_36_207	Holy	Lake	Cavan County Council	SAC;	Unassigned	Moderate	Moderate	Good	2022-2027	Review					View WB Page	View WB on EPA Water Map

36	IE_NW_36_247	Clonmullig	Lake	Cavan County Council	SAC;	Unassigned	Moderate	Moderate	Good	2022-2027	Review					View WB Page	View WB on EPA Water Map
36	IE_NW_36_261	Bun	Lake	Cavan County Council	SAC;	Unassigned	Unassigned	Poor	Good	2022-2027	Review					View WB Page	View WB on EPA Water Map
36	IE_NW_36_267	Hollywood	Lake	Monaghan County Council		Unassigned	Unassigned	Moderate	Good	2022-2027	Review					View WB Page	View WB on EPA Water Map
36	IE_NW_36_272	Mushlin	Lake	Cavan County Council		Good	Moderate	Moderate	Good	2022-2027	At risk	Sediment	Ag			View WB Page	View WB on EPA Water Map
36	IE_NW_36_277	Round	Lake	Cavan County Council	SAC;	Unassigned	Moderate	Moderate	Good	2022-2027	Review					View WB Page	View WB on EPA Water Map
36	IE_NW_36_278	Black Fermanagh	Lake	Monaghan County Council		Unassigned	Unassigned	Moderate	Good	2022-2027	Review					View WB Page	View WB on EPA Water Map
36	IE_NW_36_301	Burdautiers	Lake	Monaghan County Council	SAC;	Unassigned	Unassigned	Moderate	Good	2022-2027	Review			Kilroosky Lough Cluster	LAWPRO, Restoration	View WB Page	View WB on EPA Water Map
36	IE_NW_36_316	Graddum	Lake	Cavan County Council	DWPA;	Unassigned	Moderate	Moderate	Good	2022-2027	Review			Upper Erne	LAWPRO, Restoration	View WB Page	View WB on EPA Water Map
36	IE_NW_36_318	Corrarod	Lake	Cavan County Council	SAC;	Unassigned	Unassigned	Moderate	Good	2022-2027	Review					View WB Page	View WB on EPA Water Map
36	IE_NW_36_324	Cornaseer	Lake	Cavan County Council	DWPA;	Unassigned	Moderate	Moderate	Good	2022-2027	Review					View WB Page	View WB on EPA Water Map
36	IE_NW_36_329	Killcoran	Lake	Monaghan County Council	DWPA;	Good	Good	Moderate	Good	2022-2027	Review					View WB Page	View WB on EPA Water Map
36	IE_NW_36_331	Cornalara	Lake	Cavan County Council	DWPA;	Unassigned	Moderate	Poor	Good	2022-2027	Review					View WB Page	View WB on EPA Water Map
36	IE_NW_36_336	Mill MN	Lake	Monaghan County Council	DWPA;	Unassigned	Moderate	Poor	Good	2022-2027	Review					View WB Page	View WB on EPA Water Map
36	IE_NW_36_339	Ramages	Lake	Monaghan County Council	SAC;	Unassigned	Unassigned	Moderate	Good	2022-2027	Review					View WB Page	View WB on EPA Water Map
36	IE_NW_36_343	Drumgorry	Lake	Cavan County Council	SAC;	Unassigned	Moderate	Poor	Good	2022-2027	Review					View WB Page	View WB on EPA Water Map
36	IE_NW_36_346	Naback	Lake	Longford County Council	DWPA;	Unassigned	Moderate	Moderate	Good	2022-2027	Review					View WB Page	View WB on EPA Water Map
36	IE_NW_36_349	Drumsaul	Lake	Monaghan County Council		Unassigned	Moderate	Poor	Good	2022-2027	Review					View WB Page	View WB on EPA Water Map
36	IE_NW_36_363	Tacker	Lake	Cavan County Council		Poor	Poor	Moderate	Good	2022-2027	At risk	Nutrients	Ag	Annalee (East)	LAWPRO, Restoration	View WB Page	View WB on EPA Water Map
36	IE_NW_36_367	Commons	Lake	Cavan County Council	SAC;	Unassigned	Unassigned	Moderate	Good	2022-2027	Review					View WB Page	View WB on EPA Water Map
36	IE_NW_36_368	Dummys	Lake	Monaghan County Council	SAC;	Unassigned	Unassigned	Moderate	Good	2022-2027	Review			Kilroosky Lough Cluster	LAWPRO, Restoration	View WB Page	View WB on EPA Water Map
36	IE_NW_36_369	Derryhoo	Lake	Cavan County Council	SAC;	Unassigned	Unassigned	Poor	Good	2022-2027	Review					View WB Page	View WB on EPA Water Map
36	IE_NW_36_378	Asturrall	Lake	Cavan County Council		Unassigned	Moderate	Moderate	Good	2022-2027	Review					View WB Page	View WB on EPA Water Map
36	IE_NW_36_382	Toome Crinkill	Lake	Monaghan County Council	DWPA;	Unassigned	Moderate	Poor	Good	2022-2027	Review			Dromore (Upper)	LAWPRO, Restoration	View WB Page	View WB on EPA Water Map
36	IE_NW_36_385	Cullinaghan	Lake	Cavan County Council	SAC;	Moderate	Moderate	Moderate	Good	2022-2027	At risk	Nutrients	Ag			View WB Page	View WB on EPA Water Map
36	IE_NW_36_386	Derrygeeraghan	Lake	Cavan County Council	SAC;	Unassigned	Moderate	Poor	Good	2022-2027	Review					View WB Page	View WB on EPA Water Map
36	IE_NW_36_391	Anoneen	Lake	Cavan County Council	SAC;	Unassigned	Moderate	Moderate	Good	2022-2027	Review					View WB Page	View WB on EPA Water Map
36	IE_NW_36_394	Drumlaney	Lake	Cavan County Council	SAC;	Unassigned	Moderate	Poor	Good	2022-2027	Review					View WB Page	View WB on EPA Water Map
36	IE_NW_36_400	Derrybrick	Lake	Cavan County Council	DWPA; SAC; SPA;	Moderate	Moderate	Moderate	Good	2022-2027	At risk	Nutrients	Ag	Erne (Lower)	LAWPRO, Restoration	View WB Page	View WB on EPA Water Map
36	IE_NW_36_402	Drum	Lake	Monaghan County Council	DWPA;	Unassigned	Moderate	Poor	Good	2022-2027	Review					View WB Page	View WB on EPA Water Map
36	IE_NW_36_409	Killynenagh	Lake	Monaghan County Council	DWPA;	Unassigned	Moderate	Moderate	Good	2022-2027	Review			Bunroe GWS	NFGWS, Restoration	View WB Page	View WB on EPA Water Map
36	IE_NW_36_410	Tomkinroad	Lake	Cavan County Council	SAC;	Unassigned	Moderate	Poor	Good	2022-2027	Review					View WB Page	View WB on EPA Water Map
36	IE_NW_36_415	Drumgole	Lake	Monaghan County Council	DWPA;	Unassigned	Moderate	Poor	Good	2022-2027	Review					View WB Page	View WB on EPA Water Map
36	IE_NW_36_420	Naglare	Lake	Cavan County Council	DWPA;	Unassigned	Moderate	Moderate	Good	2022-2027	Review					View WB Page	View WB on EPA Water Map
36	IE_NW_36_421	Annaghierin	Lake	Cavan County Council	DWPA;	Unassigned	Moderate	Poor	Good	2022-2027	Review					View WB Page	View WB on EPA Water Map
36	IE_NW_36_423	Avehy	Lake	Donegal County Council	SAC;	Unassigned	Moderate	Good	Good	2021 or earlier	Not at risk					View WB Page	View WB on EPA Water Map
36	IE_NW_36_430	Garty	Lake	Cavan County Council	DWPA;	Moderate	Moderate	Poor	Good	2022-2027	At risk	Nutrients	Ag	Cullies	LAWPRO, Restoration	View WB Page	View WB on EPA Water Map
36	IE_NW_36_432	Ardan	Lake	Cavan County Council	SAC; SPA;	Moderate	Moderate	Moderate	Good	2022-2027	At risk	Nutrients	Ag			View WB Page	View WB on EPA Water Map
36	IE_NW_36_441	Grilly	Lake	Cavan County Council	SAC;	Unassigned	Unassigned	Moderate	Good	2022-2027	Review					View WB Page	View WB on EPA Water Map
36	IE_NW_36_444	Edenterriff	Lake	Cavan County Council	SAC;	Unassigned	Unassigned	Poor	Good	2022-2027	Review					View WB Page	View WB on EPA Water Map
36	IE_NW_36_445	Lower Lough Macnean	Lake	Cavan County Council		Bad	Bad	Bad	Good	2022-2027	At risk	Nutrients, Organic	Unknown, UWW	Lough Macnean	LAWPRO, Restoration	View WB Page	View WB on EPA Water Map
36	IE_NW_36_448	Kill	Lake	Cavan County Council	DWPA;	Unassigned	Moderate	Moderate	Good	2022-2027	Review			Upper Erne	LAWPRO, Restoration	View WB Page	View WB on EPA Water Map
36	IE_NW_36_458	Tonawolly	Lake	Cavan County Council	SAC;	Unassigned	Moderate	Moderate	Good	2022-2027	Review					View WB Page	View WB on EPA Water Map

36	IE_NW_36_460	Coragh	Lake	Cavan County Council	DWPA;	Unassigned	Moderate	Poor	Good	2022-2027	Review					View WB Page	View WB on EPA Water Map
36	IE_NW_36_465	Parisee	Lake	Cavan County Council	SAC;	Unassigned	Moderate	Moderate	Good	2022-2027	Review					View WB Page	View WB on EPA Water Map
36	IE_NW_36_468	Clonty	Lake	Cavan County Council	DWPA;	Unassigned	Moderate	Poor	Good	2022-2027	Review					View WB Page	View WB on EPA Water Map
36	IE_NW_36_470	Corraback	Lake	Cavan County Council	SAC;	Unassigned	Moderate	Poor	Good	2022-2027	Review					View WB Page	View WB on EPA Water Map
36	IE_NW_36_472	Faharlagh	Lake	Cavan County Council	SAC;	Unassigned	Unassigned	Moderate	Good	2022-2027	Review					View WB Page	View WB on EPA Water Map
36	IE_NW_36_476	Tullyroan	Lake	Cavan County Council	SAC;	Unassigned	Moderate	Poor	Good	2022-2027	Review					View WB Page	View WB on EPA Water Map
36	IE_NW_36_477	Black CN	Lake	Cavan County Council	SAC;	Unassigned	Moderate	Poor	Good	2022-2027	Review					View WB Page	View WB on EPA Water Map
36	IE_NW_36_486	Killynaher	Lake	Cavan County Council	SAC;	Unassigned	Moderate	Moderate	Good	2022-2027	Review					View WB Page	View WB on EPA Water Map
36	IE_NW_36_489	Killybandrick	Lake	Cavan County Council	SAC;	Unassigned	Moderate	Poor	Good	2022-2027	Review					View WB Page	View WB on EPA Water Map
36	IE_NW_36_490	Drumellis	Lake	Cavan County Council	SAC;	Unassigned	Unassigned	Poor	Good	2022-2027	Review					View WB Page	View WB on EPA Water Map
36	IE_NW_36_500	Long	Lake	Cavan County Council	SAC;	Unassigned	Moderate	Moderate	Good	2022-2027	Review					View WB Page	View WB on EPA Water Map
36	IE_NW_36_504	Drumlane or Garfinny	Lake	Cavan County Council	SAC; SPA;	Unassigned	Moderate	Moderate	Good	2022-2027	Review					View WB Page	View WB on EPA Water Map
36	IE_NW_36_505	Putigan	Lake	Cavan County Council	SAC;	Unassigned	Unassigned	Moderate	Good	2022-2027	Review					View WB Page	View WB on EPA Water Map
36	IE_NW_36_513	Kilywilly	Lake	Cavan County Council	SAC;	Unassigned	Moderate	Poor	Good	2022-2027	Review					View WB Page	View WB on EPA Water Map
36	IE_NW_36_515	Acanon	Lake	Cavan County Council	DWPA;	Unassigned	Moderate	Moderate	Good	2022-2027	Review					View WB Page	View WB on EPA Water Map
36	IE_NW_36_517	Annagh	Lake	Cavan County Council	DWPA; SAC;	Moderate	Moderate	Moderate	Good	2022-2027	At risk	Nutrients	Ag	Erne (Lower)	LAWPRO, Restoration	View WB Page	View WB on EPA Water Map
36	IE_NW_36_521	Drummany	Lake	Cavan County Council	SAC; SPA;	Unassigned	Moderate	Moderate	Good	2022-2027	Review					View WB Page	View WB on EPA Water Map
36	IE_NW_36_525a	Drumore	Lake	Monaghan County Council		Poor	Moderate	Poor	Good	2022-2027	At risk	Nutrients	Ag			View WB Page	View WB on EPA Water Map
36	IE_NW_36_525b	Drumlona	Lake	Monaghan County Council		Poor	Poor	Poor	Good	2022-2027	At risk	Nutrients, UnknownImpactType	IS, Ag			View WB Page	View WB on EPA Water Map
36	IE_NW_36_526	Inner	Lake	Monaghan County Council		Bad	Poor	Poor	Good	2022-2027	At risk	Nutrients	Ag			View WB Page	View WB on EPA Water Map
36	IE_NW_36_528	Sillan	Lake	Cavan County Council	DWPA;	Poor	Poor	Poor	Good	2022-2027	At risk	Nutrients, UnknownImpactType	Ag, IS, UWW	Annalee (East)	LAWPRO, Restoration	View WB Page	View WB on EPA Water Map
36	IE_NW_36_554	Beaghy	Lake	Cavan County Council		Unassigned	Moderate	Moderate	Good	2022-2027	Review			Cavan River	LAWPRO, Restoration	View WB Page	View WB on EPA Water Map
36	IE_NW_36_559	Aghabane	Lake	Cavan County Council	SAC;	Unassigned	Moderate	Moderate	Good	2022-2027	Review			Cullies	LAWPRO, Restoration	View WB Page	View WB on EPA Water Map
36	IE_NW_36_561	Tully CN	Lake	Cavan County Council	SAC;	Unassigned	Moderate	Poor	Good	2022-2027	Review					View WB Page	View WB on EPA Water Map
36	IE_NW_36_564	Farnharn	Lake	Cavan County Council	SAC; SPA;	Bad	Moderate	Moderate	Good	2022-2027	At risk	Nutrients	Other, Ag	Cavan River	LAWPRO, Restoration	View WB Page	View WB on EPA Water Map
36	IE_NW_36_565	Pleasure	Lake	Cavan County Council	SAC;	Unassigned	Unassigned	Moderate	Good	2022-2027	Review					View WB Page	View WB on EPA Water Map
36	IE_NW_36_573	Bawn CN	Lake	Cavan County Council	SAC; SPA;	Moderate	Moderate	Moderate	Good	2022-2027	At risk	Nutrients	Ag	Cullies	LAWPRO, Restoration	View WB Page	View WB on EPA Water Map
36	IE_NW_36_574	Town	Lake	Cavan County Council	SAC; SPA;	Unassigned	Poor	Poor	Good	2022-2027	Review			Cullies	LAWPRO, Restoration	View WB Page	View WB on EPA Water Map
36	IE_NW_36_575	Derry	Lake	Cavan County Council	SAC;	Unassigned	Moderate	Moderate	Good	2022-2027	Review			Cullies	LAWPRO, Restoration	View WB Page	View WB on EPA Water Map
36	IE_NW_36_577	Brackley	Lake	Cavan County Council		Unassigned	Moderate	Moderate	Good	2022-2027	At risk	UnknownImpactType	Unknown			View WB Page	View WB on EPA Water Map
36	IE_NW_36_580	Derrygid	Lake	Cavan County Council	SAC; SPA; NSA;	Unassigned	Moderate	Poor	Good	2022-2027	At risk	Nutrients	Ag	Cavan River	LAWPRO, Restoration	View WB Page	View WB on EPA Water Map
36	IE_NW_36_581	Broompark	Lake	Cavan County Council	SAC; SPA;	Unassigned	Unassigned	Moderate	Good	2022-2027	Review					View WB Page	View WB on EPA Water Map
36	IE_NW_36_597	Mill CN	Lake	Cavan County Council	DWPA; SAC;	Moderate	Moderate	Moderate	Good	2022-2027	At risk	Nutrients	Ag	Cullies	LAWPRO, Restoration	View WB Page	View WB on EPA Water Map
36	IE_NW_36_599	Derreskit	Lake	Cavan County Council	SAC;	Unassigned	Poor	Poor	Good	2022-2027	Review			Cullies	LAWPRO, Restoration	View WB Page	View WB on EPA Water Map
36	IE_NW_36_603	Deraik	Lake	Cavan County Council	SAC; SPA;	Unassigned	Moderate	Moderate	Good	2022-2027	Review					View WB Page	View WB on EPA Water Map
36	IE_NW_36_614	Drumlaheen	Lake	Leitrim County Council		Poor	Moderate	Moderate	Good	2022-2027	At risk	Nutrients, Organic	Ag			View WB Page	View WB on EPA Water Map
36	IE_NW_36_615	Glasshouse	Lake	Cavan County Council		Bad	Poor	Poor	Good	2022-2027	At risk	Nutrients	For, Ag	Cullies	LAWPRO, Restoration	View WB Page	View WB on EPA Water Map
36	IE_NW_36_618	Atrain	Lake	Cavan County Council	DWPA; SAC; SPA;	Moderate	Moderate	Moderate	Good	2022-2027	At risk	Nutrients	Ag	Erne (Lower)	LAWPRO, Restoration	View WB Page	View WB on EPA Water Map
36	IE_NW_36_623	Bawn MN	Lake	Monaghan County Council	DWPA;	Bad	Poor	Poor	Good	2022-2027	At risk	Nutrients	Ag			View WB Page	View WB on EPA Water Map
36	IE_NW_36_624	Bunerky	Lake	Cavan County Council		Moderate	Moderate	Moderate	Good	2022-2027	At risk	Nutrients, UnknownImpactType	IS, Ag	Templeport	LAWPRO, Restoration	View WB Page	View WB on EPA Water Map
36	IE_NW_36_628	Carrs	Lake	Cavan County Council	SAC; SPA;	Unassigned	Moderate	Moderate	Good	2022-2027	Review					View WB Page	View WB on EPA Water Map
36	IE_NW_36_632	Disert	Lake	Cavan County Council	SAC;	Unassigned	Poor	Poor	Good	2022-2027	Review			Cullies	LAWPRO, Restoration	View WB Page	View WB on EPA Water Map

36	IE_NW_36_633	Coalpit	Lake	Cavan County Council	SAC; NSA;	Unassigned	Moderate	Poor	Good	2022-2027	At risk	Nutrients	Ag	Cavan River	LAWPRO, Restoration	View WB Page	View WB on EPA Water Map
36	IE_NW_36_635	Baraghy	Lake	Cavan County Council	DWPA;	Unassigned	Moderate	Poor	Good	2022-2027	Review					View WB Page	View WB on EPA Water Map
36	IE_NW_36_638	Avaghon	Lake	Monaghan County Council		Moderate	Moderate	Moderate	Good	2022-2027	At risk	Nutrients	Ag	Avaghon	LAWPRO, Restoration	View WB Page	View WB on EPA Water Map
36	IE_NW_36_640	Tullyguide	Lake	Cavan County Council	SAC; SPA;	Unassigned	Poor	Poor	Good	2022-2027	Review					View WB Page	View WB on EPA Water Map
36	IE_NW_36_641	Creeve	Lake	Monaghan County Council		Unassigned	Moderate	Poor	Good	2022-2027	Review			Dromore (Upper)	LAWPRO, Restoration	View WB Page	View WB on EPA Water Map
36	IE_NW_36_642	St Johns	Lake	Leitrim County Council		Unassigned	Poor	Poor	Good	2022-2027	Review					View WB Page	View WB on EPA Water Map
36	IE_NW_36_647	White Rockcorry	Lake	Monaghan County Council	DWPA;	Poor	Poor	Poor	Good	2022-2027	At risk	Nutrients, Organic	UR, Ag			View WB Page	View WB on EPA Water Map
36	IE_NW_36_648	Garadice	Lake	Leitrim County Council		Poor	Moderate	Moderate	Good	2022-2027	At risk	Morphological, Nutrients	HYMO, Ag	Garadice	LAWPRO, Restoration	View WB Page	View WB on EPA Water Map
36	IE_NW_36_651	Tullynassidagh	Lake	Donegal County Council	SAC;	Moderate	Moderate	Moderate	Good	2022-2027	At risk	UnknownImpactType	Peat			View WB Page	View WB on EPA Water Map
36	IE_NW_36_652	Inchin	Lake	Cavan County Council	SAC; SPA;	Unassigned	Moderate	Moderate	Good	2022-2027	Review					View WB Page	View WB on EPA Water Map
36	IE_NW_36_655	Corglass	Lake	Cavan County Council	SAC; SPA;	Bad	Bad	Bad	Good	2022-2027	At risk	Nutrients	Ag			View WB Page	View WB on EPA Water Map
36	IE_NW_36_657	Oughter South	Lake	Cavan County Council	SAC; SPA; NSA;	Moderate	Poor	Moderate	Good	2022-2027	At risk	Nutrients	Ag, DWTS	Erne (Lower)	LAWPRO, Restoration	View WB Page	View WB on EPA Water Map
36	IE_NW_36_661	Oughter North	Lake	Cavan County Council	SAC; SPA;	Unassigned	Moderate	Poor	Good	2022-2027	Review			Erne (Lower)	LAWPRO, Restoration	View WB Page	View WB on EPA Water Map
36	IE_NW_36_665	Scur	Lake	Leitrim County Council		Moderate	Poor	Moderate	Good	2022-2027	At risk	Sediment, Nutrients	Ag, HYMO			View WB Page	View WB on EPA Water Map
36	IE_NW_36_669	Killrosky	Lake	Monaghan County Council	SAC;	Unassigned	Unassigned	Moderate	Good	2022-2027	Review			Killrosky Lough Cluster	LAWPRO, Restoration	View WB Page	View WB on EPA Water Map
36	IE_NW_36_671	Egish	Lake	Monaghan County Council		Bad	Bad	Bad	Good	2022-2027	At risk	Chemical, Nutrients, UnknownImpactType	IS, Ag			View WB Page	View WB on EPA Water Map
36	IE_NW_36_672	Erne Upper	Lake	Cavan County Council	SAC;	Poor	Poor	Poor	Good	2022-2027	At risk	Nutrients	Ag			View WB Page	View WB on EPA Water Map
36	IE_NW_36_673	Macnean Upper	Lake	Cavan County Council		Moderate	Poor	Poor	Good	2022-2027	At risk	Nutrients	For, Ag	Lough Macnean	LAWPRO, Restoration	View WB Page	View WB on EPA Water Map
36	IE_NW_36_677	Castle CN	Lake	Cavan County Council	SAC;	Unassigned	Moderate	Moderate	Good	2022-2027	Review					View WB Page	View WB on EPA Water Map
36	IE_NW_36_684	Namachree	Lake	Monaghan County Council		Unassigned	Moderate	Poor	Good	2022-2027	Review					View WB Page	View WB on EPA Water Map
36	IE_NW_36_706	Gorman	Lake	Donegal County Council	DWPA;	Good	Good	Good	Good	2021 or earlier	Not at risk					View WB Page	View WB on EPA Water Map
36	IE_NW_36_710	Columbkille	Lake	Donegal County Council	DWPA;	Unassigned	Moderate	Good	Good	2021 or earlier	Review					View WB Page	View WB on EPA Water Map
36	IE_NW_36_711	Yearty	Lake	Donegal County Council	SAC;	Good	Good	Good	Good	2021 or earlier	Not at risk					View WB Page	View WB on EPA Water Map
36	IE_NW_36_712	Unshin	Lake	Donegal County Council	DWPA; SAC;	Good	Good	Good	Good	2021 or earlier	Review					View WB Page	View WB on EPA Water Map
36	IE_NW_36_715	Golagh	Lake	Donegal County Council	SAC;	Moderate	Moderate	Good	Good	2021 or earlier	Not at risk					View WB Page	View WB on EPA Water Map
36	IE_NW_36_717	Assaroe	Lake	Donegal County Council		Unassigned	Unassigned	Good	Good	2021 or earlier	Review					View WB Page	View WB on EPA Water Map
36	IE_NW_36_718	Kilylea	Lake	Cavan County Council	SAC;	Unassigned	Unassigned	Poor	Good	2022-2027	Review					View WB Page	View WB on EPA Water Map
36	IE_NW_36_719	Quivvy	Lake	Cavan County Council	SAC;	Unassigned	Unassigned	Poor	Good	2022-2027	Review					View WB Page	View WB on EPA Water Map
36	IE_NW_36_720	Derrykerrib	Lake	Cavan County Council	SAC;	Unassigned	Unassigned	Moderate	Good	2022-2027	Review					View WB Page	View WB on EPA Water Map
36	IE_NW_36_721	Summerhill	Lake	Monaghan County Council	SAC;	Moderate	Unassigned	Moderate	Good	2022-2027	At risk	Nutrients	Ag	Killrosky Lough Cluster	LAWPRO, Restoration	View WB Page	View WB on EPA Water Map
36	IE_NW_36_723	Gowna North	Lake	Cavan County Council	DWPA;	Bad	Poor	Poor	Good	2022-2027	At risk	Nutrients	Ag			View WB Page	View WB on EPA Water Map
36	IE_NW_36_724	Gowna South	Lake	Longford County Council		Poor	Moderate	Moderate	Good	2022-2027	At risk	Chemical, Nutrients, UnknownImpactType	Ag, IS			View WB Page	View WB on EPA Water Map
36	IE_NW_36_725	Derrycassan West	Lake	Cavan County Council		Unassigned	Poor	Poor	Good	2022-2027	Review			Garadice	LAWPRO, Restoration	View WB Page	View WB on EPA Water Map
36	IE_NW_36_726	Derrycassan Mid	Lake	Cavan County Council		Poor	Poor	Poor	Good	2022-2027	At risk	Nutrients	Ag	Garadice	LAWPRO, Restoration	View WB Page	View WB on EPA Water Map
36	IE_NW_36_727	Derrycassan East	Lake	Cavan County Council		Unassigned	Poor	Poor	Good	2022-2027	Review			Garadice	LAWPRO, Restoration	View WB Page	View WB on EPA Water Map
36	UKGBNI3NW0006	Erne Lower Kesh	Lake	N.A.		Unassigned	Unassigned	Poor	Good	2022-2027	Review					View WB Page	View WB on EPA Water Map
36	IE_NW_358010400	BALLAGH_010	River	Leitrim County Council	SAC;	Unassigned	Good	Good	Good	2021 or earlier	Review			Lough Melvin and Drowes	LAWPRO, Restoration	View WB Page	View WB on EPA Water Map
36	IE_NW_358070200	BRADOGE_020	River	Donegal County Council		Moderate	Moderate	Good	Good	2021 or earlier	Not at risk					View WB Page	View WB on EPA Water Map
36	IE_NW_35D050100	DUFF_010	River	Leitrim County Council	SAC;	Good	Good	Good	High	2022-2027	At risk	Nutrients	Ag			View WB Page	View WB on EPA Water Map
36	IE_NW_35D050250	DUFF_020	River	Leitrim County Council	SAC;	Good	High	Good	High	2022-2027	At risk	Nutrients	Ag, Peat			View WB Page	View WB on EPA Water Map
36	IE_NW_35D050400	DUFF_030	River	Sligo County Council	SAC;	High	Good	Good	Good	2021 or earlier	Not at risk			Ballinrillick GWS	NFGWS, Protection	View WB Page	View WB on EPA Water Map
36	IE_NW_35G020200	GLENANIFF_010	River	Leitrim County Council	SAC;	High	Good	High	High	2021 or earlier	Not at risk			Lough Melvin and Drowes	LAWPRO, Restoration	View WB Page	View WB on EPA Water Map

36	IE_NW_35K380940	KINLOUGH_010	River	Leitrim County Council	SAC;	Unassigned	Good	Good	Good	2021 or earlier	Review			Lough Melvin and Drowes	LAWPRO, Restoration	View WB Page	View WB on EPA Water Map	
36	IE_NW_35L660960	LATTONE_010	River	Leitrim County Council		Unassigned	Good	Good	Good	2021 or earlier	Review			Lough Melvin and Drowes	LAWPRO, Restoration	View WB Page	View WB on EPA Water Map	
36	IE_NW_35R320460	ROSFRIAR_010	River	Leitrim County Council		Unassigned	Good	Good	Good	2021 or earlier	Review			Lough Melvin and Drowes	LAWPRO, Restoration	View WB Page	View WB on EPA Water Map	
36	IE_NW_35S070870	SRAGARVE_010	River	Leitrim County Council	SAC;	Unassigned	Good	Good	Good	2021 or earlier	Review			Lough Melvin and Drowes	LAWPRO, Restoration	View WB Page	View WB on EPA Water Map	
36	IE_NW_36A010300	ABBEY_010	River	Donegal County Council	SAC;	Unassigned	Moderate	Good	Good	2021 or earlier	Review					View WB Page	View WB on EPA Water Map	
36	IE_NW_36A020080	ANNALEE_010	River	Monaghan County Council			Good	Moderate	Moderate	Good	2022-2027	At risk	Sediment	Ag	Annalee (East)	LAWPRO, Restoration	View WB Page	View WB on EPA Water Map
36	IE_NW_36A020150	ANNALEE_020	River	Cavan County Council			Poor	Moderate	Poor	Good	2022-2027	At risk	Nutrients	Ag	Annalee (East)	LAWPRO, Restoration	View WB Page	View WB on EPA Water Map
36	IE_NW_36A020350	ANNALEE_030	River	Cavan County Council	DWPA;		Good	Good	Good	Good	2021 or earlier	Not at risk			Annalee (East)	LAWPRO, Restoration	View WB Page	View WB on EPA Water Map
36	IE_NW_36A020500	ANNALEE_040	River	Cavan County Council			Good	Good	Good	Good	2021 or earlier	Review					View WB Page	View WB on EPA Water Map
36	IE_NW_36A020600	ANNALEE_050	River	Cavan County Council	DWPA;		Good	Good	Good	Good	2021 or earlier	Not at risk			Kilsherdany GWS	NFGWS, Protection	View WB Page	View WB on EPA Water Map
36	IE_NW_36A020800	ANNALEE_060	River	Cavan County Council			Good	Good	Good	Good	2021 or earlier	Not at risk					View WB Page	View WB on EPA Water Map
36	IE_NW_36A020900	ANNALEE_070	River	Cavan County Council			Good	Good	Good	Good	2021 or earlier	Review					View WB Page	View WB on EPA Water Map
36	IE_NW_36A021000	ANNALEE_080	River	Cavan County Council			Good	Good	Good	Good	2021 or earlier	Not at risk					View WB Page	View WB on EPA Water Map
36	IE_NW_36A021150	ANNALEE_090	River	Cavan County Council	SAC;		Good	Good	Good	Good	2021 or earlier	Not at risk			Annalee	LAWPRO, Restoration	View WB Page	View WB on EPA Water Map
36	IE_NW_36A021400	ANNALEE_100	River	Cavan County Council	SAC;		Moderate	Moderate	Moderate	Good	2022-2027	At risk	Morphological, Nutrients, Organic	HYMO, Ag	Annalee	LAWPRO, Restoration	View WB Page	View WB on EPA Water Map
36	IE_NW_36A030300	AGHACASHLAUN_010	River	Leitrim County Council	SAC;		High	Good	Good	High	2022-2027	At risk	Hydrological, Morphological	HYMO	Sliabh an Iarainn GWS_Blu Dot	NFGWS, Restoration	View WB Page	View WB on EPA Water Map
36	IE_NW_36A030500	AGHACASHLAUN_020	River	Leitrim County Council	SAC;		Good	Good	Good	Good	2021 or earlier	Not at risk					View WB Page	View WB on EPA Water Map
36	IE_NW_36A030900	ADHACASHLAUN_030	River	Leitrim County Council			Unassigned	Good	Good	Good	2021 or earlier	Review					View WB Page	View WB on EPA Water Map
36	IE_NW_36A050500	ANNADALE STREAM_010	River	Leitrim County Council	SAC;		Good	Good	Good	Good	2021 or earlier	Not at risk					View WB Page	View WB on EPA Water Map
36	IE_NW_36A060400	AGHNACLIFFE STREAM_010	River	Longford County Council			Good	Good	High	Good	2021 or earlier	Not at risk			Aghnaccliffe Stream	Longford County Council, Protection	View WB Page	View WB on EPA Water Map
36	IE_NW_36A070600	AVAGHON LAKE STREAM_010	River	Monaghan County Council			Poor	Poor	Poor	Good	2022-2027	At risk	Nutrients	DWTS, Ag	Avaghon	LAWPRO, Restoration	View WB Page	View WB on EPA Water Map
36	IE_NW_36B010100	BALLINAGH_010	River	Cavan County Council			Unassigned	Moderate	Moderate	Good	2022-2027	At risk	Nutrients	Ag	Erne (Lower)	LAWPRO, Restoration	View WB Page	View WB on EPA Water Map
36	IE_NW_36B030600	BLACKWATER (SWANLINBAR)_010	River	Cavan County Council	SAC;		Unassigned	Good	Good	Good	2021 or earlier	Not at risk					View WB Page	View WB on EPA Water Map
36	IE_NW_36B040200	BLACKWATER (NEWTOWNGORE)_010	River	Cavan County Council	SAC;		High	Moderate	High	High	2021 or earlier	Not at risk			Templeport	LAWPRO, Restoration	View WB Page	View WB on EPA Water Map
36	IE_NW_36B040400	BLACKWATER (NEWTOWNGORE)_020	River	Cavan County Council			High	Good	Good	Good	2021 or earlier	Not at risk			Templeport	LAWPRO, Restoration	View WB Page	View WB on EPA Water Map
36	IE_NW_36B050300	BUNNOE_010	River	Monaghan County Council	DWPA;		Poor	Poor	Poor	Good	2022-2027	At risk	Nutrients	Ag	Drumgole GWS	NFGWS, Restoration	View WB Page	View WB on EPA Water Map
36	IE_NW_36B050400	BUNNOE_020	River	Monaghan County Council			Poor	Poor	Moderate	Good	2022-2027	At risk	Nutrients	Ag			View WB Page	View WB on EPA Water Map
36	IE_NW_36B050500	BUNNOE_030	River	Monaghan County Council			Good	Moderate	Good	Good	2021 or earlier	Review					View WB Page	View WB on EPA Water Map
36	IE_NW_36B050700	BUNNOE_040	River	Cavan County Council			Moderate	Moderate	Good	Good	2021 or earlier	Review					View WB Page	View WB on EPA Water Map
36	IE_NW_36B070500	BAWNBOY_010	River	Cavan County Council			High	Good	Good	Good	2021 or earlier	Not at risk					View WB Page	View WB on EPA Water Map
36	IE_NW_36C020300	CAVAN_010	River	Cavan County Council	NSA;		Poor	Poor	Poor	Good	2022-2027	At risk	Nutrients, Organic	Ag, UR	Cavan River	LAWPRO, Restoration	View WB Page	View WB on EPA Water Map
36	IE_NW_36C020400	CAVAN_020	River	Cavan County Council	SAC; SPA; NSA;		Poor	Poor	Poor	Good	2022-2027	At risk	Nutrients, Organic	Ag, UR	Cavan River	LAWPRO, Restoration	View WB Page	View WB on EPA Water Map
36	IE_NW_36C030300	CULLIES_010	River	Cavan County Council			Poor	Good	Poor	Good	2022-2027	At risk	Sediment, Morphological, Nutrients, Organic	Ag, DWTS, HYMO	Cullies	LAWPRO, Restoration	View WB Page	View WB on EPA Water Map
36	IE_NW_36C030550	CULLIES_020	River	Leitrim County Council			Good	Good	Good	Good	2021 or earlier	Not at risk			Cullies	LAWPRO, Restoration	View WB Page	View WB on EPA Water Map
36	IE_NW_36C030600	CULLIES_030	River	Cavan County Council			Poor	Poor	Poor	Good	2022-2027	At risk	Morphological, Nutrients	Ag, HYMO	Cullies	LAWPRO, Restoration	View WB Page	View WB on EPA Water Map
36	IE_NW_36C030700	CULLIES_040	River	Cavan County Council	SAC;		Moderate	Poor	Moderate	Good	2022-2027	At risk	Sediment, Hydrological, Nutrients	For, Ab, Ag	Cullies	LAWPRO, Restoration	View WB Page	View WB on EPA Water Map
36	IE_NW_36C030900	CULLIES_050	River	Cavan County Council	SAC; SPA;		Poor	Poor	Poor	Good	2022-2027	At risk	Nutrients, Organic	Ag, UWW, Ind	Cullies	LAWPRO, Restoration	View WB Page	View WB on EPA Water Map
36	IE_NW_36C040400	CORNAVANNOGE_010	River	Leitrim County Council	SAC;		Good	Good	High	Good	2021 or earlier	Not at risk					View WB Page	View WB on EPA Water Map
36	IE_NW_36C040600	CORNAVANNOGE_020	River	Leitrim County Council	SAC;		Good	High	High	Good	2021 or earlier	Not at risk					View WB Page	View WB on EPA Water Map
36	IE_NW_36D020075	DROMORE_010	River	Monaghan County Council			Moderate	Good	Poor	Good	2022-2027	At risk	Sediment, Nutrients	Ag	Dromore (Upper)	LAWPRO, Restoration	View WB Page	View WB on EPA Water Map
36	IE_NW_36D020090	DROMORE_020	River	Monaghan County Council			Moderate	Moderate	Moderate	Good	2022-2027	At risk	Nutrients	Ag	Dromore (Upper)	LAWPRO, Restoration	View WB Page	View WB on EPA Water Map

36	IE_NW_36D020150	DROMORE_030	River	Monaghan County Council		Poor	Poor	Poor	Good	2022-2027	At risk	Nutrients, Organic	Ag, UR	Dromore (Upper)	LAWPRO, Restoration	View WB Page	View WB on EPA Water Map
36	IE_NW_36D020300	DROMORE_040	River	Monaghan County Council		Poor	Poor	Poor	Good	2022-2027	At risk	Nutrients, Organic	UR, Ag, UWW	Dromore (Upper)	LAWPRO, Restoration	View WB Page	View WB on EPA Water Map
36	IE_NW_36D020500	DROMORE_050	River	Monaghan County Council		Moderate	Moderate	Poor	Good	2022-2027	At risk	Chemical, Nutrients	Ag			View WB Page	View WB on EPA Water Map
36	IE_NW_36D020600	DROMORE_060	River	Monaghan County Council		Poor	Poor	Poor	Good	2022-2027	At risk	Nutrients	Ag			View WB Page	View WB on EPA Water Map
36	IE_NW_36D020700	DROMORE_070	River	Monaghan County Council		Poor	Poor	Poor	Good	2022-2027	At risk	Nutrients, Organic	Ag, UWW			View WB Page	View WB on EPA Water Map
36	IE_NW_36D020900	DROMORE_080	River	Cavan County Council		Good	Good	Good	Good	2021 or earlier	Not at risk					View WB Page	View WB on EPA Water Map
36	IE_NW_36D070100	DERRADDA STREAM_010	River	Cavan County Council	SAC;	Good	Good	Good	Good	2021 or earlier	Not at risk					View WB Page	View WB on EPA Water Map
36	IE_NW_36E010100	ERNE_010	River	Cavan County Council		Poor	Moderate	Moderate	Good	2022-2027	At risk	Sediment, Nutrients, Organic	HYMO, Ag	Upper Erne	LAWPRO, Restoration	View WB Page	View WB on EPA Water Map
36	IE_NW_36E010200	ERNE_020	River	Cavan County Council		Poor	Moderate	Moderate	Good	2022-2027	At risk	Sediment, Hydrological, Nutrients, Organic	Ab, HYMO, Ag	Upper Erne	LAWPRO, Restoration	View WB Page	View WB on EPA Water Map
36	IE_NW_36E010400	ERNE_030	River	Cavan County Council		Poor	Poor	Moderate	Good	2022-2027	At risk	Morphological, Nutrients	Ag, HYMO	Upper Erne	LAWPRO, Restoration	View WB Page	View WB on EPA Water Map
36	IE_NW_36E010500	ERNE_040	River	Cavan County Council		Poor	Moderate	Moderate	Good	2022-2027	At risk	Sediment, Morphological, Nutrients, Organic	HYMO, Ag	Upper Erne	LAWPRO, Restoration	View WB Page	View WB on EPA Water Map
36	IE_NW_36E010700	ERNE_050	River	Cavan County Council		Good	Good	Good	Good	2021 or earlier	Not at risk			Upper Erne	LAWPRO, Restoration	View WB Page	View WB on EPA Water Map
36	IE_NW_36E010900	ERNE_060	River	Longford County Council		Good	Good	Good	Good	2021 or earlier	Not at risk					View WB Page	View WB on EPA Water Map
36	IE_NW_36E011100	ERNE_070	River	Cavan County Council		Moderate	Moderate	Poor	Good	2022-2027	At risk	Nutrients, Organic	Ag	Erne (Lower)	LAWPRO, Restoration	View WB Page	View WB on EPA Water Map
36	IE_NW_36E011300	ERNE_080	River	Cavan County Council	SAC; SPA; NSA;	Moderate	Moderate	Moderate	Good	2022-2027	At risk	Nutrients	Ag	Erne (Lower)	LAWPRO, Restoration	View WB Page	View WB on EPA Water Map
36	IE_NW_36E011410	ERNE_090	River	Cavan County Council	DWPA; SAC;	Moderate	Poor	Poor	Good	2022-2027	At risk	Nutrients	Ag	Erne (Lower)	LAWPRO, Restoration	View WB Page	View WB on EPA Water Map
36	IE_NW_36E011440	ERNE_100	River	Cavan County Council	SAC;	Unassigned	Poor	Moderate	Good	2022-2027	Review			Erne (Lower)	LAWPRO, Restoration	View WB Page	View WB on EPA Water Map
36	IE_NW_36F010200	FINN (MONAGHAN)_020	River	Monaghan County Council		Moderate	Moderate	Moderate	Good	2022-2027	At risk	Nutrients	Ag			View WB Page	View WB on EPA Water Map
36	IE_NW_36F010400	FINN (MONAGHAN)_030	River	Monaghan County Council	DWPA;	Moderate	Good	Good	Good	2021 or earlier	Review					View WB Page	View WB on EPA Water Map
36	IE_NW_36F010500	FINN (MONAGHAN)_040	River	Monaghan County Council	SAC;	Moderate	Moderate	Moderate	Good	2022-2027	At risk	Nutrients, Organic	Ag, UR, UWW			View WB Page	View WB on EPA Water Map
36	IE_NW_36F170840	FASTRY_010	River	Cavan County Council		Unassigned	Good	Moderate	Good	2022-2027	Review					View WB Page	View WB on EPA Water Map
36	IE_NW_36G750800	GORTNANA_010	River	Monaghan County Council		Unassigned	Moderate	Moderate	Good	2022-2027	At risk	Nutrients, Organic	UR			View WB Page	View WB on EPA Water Map
36	IE_NW_36K010100	KNAPPAGH_010	River	Monaghan County Council		Unassigned	Moderate	Moderate	Good	2022-2027	At risk	Nutrients	Ag			View WB Page	View WB on EPA Water Map
36	IE_NW_36K010200	KNAPPAGH_020	River	Monaghan County Council		Poor	Poor	Poor	Good	2022-2027	At risk	Nutrients	Ag			View WB Page	View WB on EPA Water Map
36	IE_NW_36K010400	KNAPPAGH_030	River	Monaghan County Council		Poor	Poor	Poor	Good	2022-2027	At risk	Hydrological	HYMO			View WB Page	View WB on EPA Water Map
36	IE_NW_36K010700	KNAPPAGH_040	River	Monaghan County Council		Good	Good	Good	Good	2021 or earlier	Not at risk					View WB Page	View WB on EPA Water Map
36	IE_NW_36L010030	LARAGH_010	River	Cavan County Council		Good	Moderate	Moderate	Good	2022-2027	At risk	Sediment, Nutrients	Ag			View WB Page	View WB on EPA Water Map
36	IE_NW_36L010080	LARAGH_020	River	Cavan County Council		Good	Good	Good	Good	2021 or earlier	Not at risk					View WB Page	View WB on EPA Water Map
36	IE_NW_36L010400	LARAGH_030	River	Cavan County Council		Good	Good	Good	Good	2021 or earlier	Not at risk					View WB Page	View WB on EPA Water Map
36	IE_NW_36L020800	LAHEEN STREAM_010	River	Leitrim County Council		Poor	Poor	Moderate	Good	2022-2027	At risk	Hydrological, Morphological	HYMO, For	Cullies	LAWPRO, Restoration	View WB Page	View WB on EPA Water Map
36	IE_NW_36L030300	LEGGA STREAM_010	River	Longford County Council		Moderate	Moderate	Moderate	Good	2022-2027	Review			Cullies	LAWPRO, Restoration	View WB Page	View WB on EPA Water Map
36	IE_NW_36L030700	LEGGA STREAM_020	River	Leitrim County Council		Moderate	Poor	Moderate	Good	2022-2027	At risk	Sediment, Nutrients, Organic	Ag, Ind, HYMO	Cullies	LAWPRO, Restoration	View WB Page	View WB on EPA Water Map
36	IE_NW_36M010150	MAGHERARNEY_010	River	Monaghan County Council		Poor	Poor	Poor	Good	2022-2027	At risk	Morphological, Nutrients	DWTS, Ag			View WB Page	View WB on EPA Water Map
36	IE_NW_36M010200	MAGHERARNEY_020	River	Monaghan County Council		Poor	Poor	Poor	Good	2022-2027	At risk	Nutrients, Organic	Ag, UR			View WB Page	View WB on EPA Water Map
36	IE_NW_36M020070	MADABAWN STREAM_010	River	Cavan County Council		Good	Moderate	Moderate	Good	2022-2027	At risk	Sediment, Nutrients	Ag			View WB Page	View WB on EPA Water Map
36	IE_NW_36M030900	MAGHERY_010	River	Monaghan County Council		Poor	Poor	Poor	Good	2022-2027	At risk	Nutrients	Ag	Maghery	LAWPRO, Restoration	View WB Page	View WB on EPA Water Map
36	IE_NW_36M031200	MAGHERY_020	River	Monaghan County Council		Poor	Poor	Poor	Good	2022-2027	At risk	Nutrients	Ag, Ind	Maghery	LAWPRO, Restoration	View WB Page	View WB on EPA Water Map
36	IE_NW_36M080200	Major Lough Stream_010	River	Monaghan County Council		Poor	Poor	Poor	Good	2022-2027	At risk	UnknownImpactType	Unknown	Dromore (Upper)	LAWPRO, Restoration	View WB Page	View WB on EPA Water Map
36	IE_NW_36M170890	MULRICK_010	River	Longford County Council		Unassigned	Good	Moderate	Good	2022-2027	Review					View WB Page	View WB on EPA Water Map
36	IE_NW_36M620820	MAY HILL_010	River	Cavan County Council	SAC;	Unassigned	Good	Moderate	Good	2022-2027	Review					View WB Page	View WB on EPA Water Map
36	IE_NW_36N010500	NEWTOWNGORE STREAM_010	River	Leitrim County Council		Unassigned	Good	Moderate	Good	2022-2027	Review			Garadice	LAWPRO, Restoration	View WB Page	View WB on EPA Water Map

36	IE_NW_36O010800	OWENSALLAGH_010	River	Cavan County Council	DWPA; SAC;	Good	Good	Good	Good	2021 or earlier	Not at risk					View WB Page	View WB on EPA Water Map
36	IE_NW_36R010600	RAG (CAVAN)_010	River	Cavan County Council	SAC;	Poor	Poor	Poor	Good	2022-2027	At risk	Hydrological, Morphological, Nutrients	HYMO, Ag			View WB Page	View WB on EPA Water Map
36	IE_NW_36R010800	RAG (CAVAN)_020	River	Cavan County Council	SAC;	Good	Good	Good	Good	2021 or earlier	Not at risk					View WB Page	View WB on EPA Water Map
36	IE_NW_36R020200	ROO_010	River	Cavan County Council	SAC;	Poor	Moderate	Good	Good	2021 or earlier	Not at risk			Lough Macnean	LAWPRO, Restoration	View WB Page	View WB on EPA Water Map
36	IE_NW_36S010100	SWANLINBAR_010	River	Cavan County Council	SAC;	High	High	High	High	2021 or earlier	Not at risk			Swanlinbar_Blue Dot	LAWPRO, Protection	View WB Page	View WB on EPA Water Map
36	IE_NW_36S010300	SWANLINBAR_020	River	Cavan County Council	SAC;	Good	Good	Good	Good	2021 or earlier	Not at risk			Swanlinbar_Blue Dot	LAWPRO, Protection	View WB Page	View WB on EPA Water Map
36	IE_NW_36S020075	STRADONE_010	River	Cavan County Council		Good	Good	Good	Good	2021 or earlier	Not at risk					View WB Page	View WB on EPA Water Map
36	IE_NW_36S020200	STRADONE_020	River	Cavan County Council		Good	Good	Good	Good	2021 or earlier	Not at risk					View WB Page	View WB on EPA Water Map
36	IE_NW_36S530890	SESSIAGHKEELTA_010	River	Donegal County Council		Unassigned	Good	Good	Good	2021 or earlier	Review					View WB Page	View WB on EPA Water Map
36	IE_NW_36T010600	TEMPLEPORT LAKE STREAM_010	River	Cavan County Council		Poor	Poor	Poor	Good	2022-2027	At risk	Chemical, Nutrients, OtherSignificantImpacts	Ag	Templeport	LAWPRO, Restoration	View WB Page	View WB on EPA Water Map
36	IE_NW_36W010180	WOODFORD (CAVAN)_010	River	Leitrim County Council		Unassigned	Good	Good	Good	2021 or earlier	Review			Garadice	LAWPRO, Restoration	View WB Page	View WB on EPA Water Map
36	IE_NW_36W010400	WOODFORD (CAVAN)_020	River	Cavan County Council		High	High	Good	High	2022-2027	At risk	UnknownImpactType	Unknown	Kildallan GWS_Blue Dot	NFGWS, Protection	View WB Page	View WB on EPA Water Map
36	IE_NW_36Y010200	YELLOW (BALLINAMORE)_010	River	Leitrim County Council	SAC;	Moderate	Moderate	Good	Good	2021 or earlier	Not at risk			Yellow (Ballinamore)	LAWPRO, Restoration	View WB Page	View WB on EPA Water Map
36	IE_NW_36Y010400	YELLOW (BALLINAMORE)_020	River	Leitrim County Council		Unassigned	Moderate	High	Good	2021 or earlier	Not at risk			Yellow (Ballinamore)	LAWPRO, Restoration	View WB Page	View WB on EPA Water Map
36	IE_NW_36Y010620	YELLOW (BALLINAMORE)_030	River	Leitrim County Council		Unassigned	Moderate	High	Good	2021 or earlier	Review			Yellow (Ballinamore)	LAWPRO, Restoration	View WB Page	View WB on EPA Water Map
36	IE_WE_35M540870	MULLAGHMORE_010	River	Sligo County Council	SAC;	Unassigned	Poor	Moderate	Good	2022-2027	Review					View WB Page	View WB on EPA Water Map
36	UKGBNI1NW353504075	County River (Carran West)	River	Leitrim County Council	SAC;	Unassigned	Good	Good	Good	2021 or earlier	Review			Lough Melvin and Drowes	LAWPRO, Restoration	View WB Page	View WB on EPA Water Map
36	UKGBNI1NW353504076	County River (Lattone)	River	Leitrim County Council		Unassigned	Good	Good	Good	2021 or earlier	Not at risk					View WB Page	View WB on EPA Water Map
36	UKGBNI1NW353504077	BRADOGUE_010	River	Leitrim County Council		Good	Poor	Good	Good	2021 or earlier	Review					View WB Page	View WB on EPA Water Map
36	UKGBNI1NW353504082	DROWES_010	River	Leitrim County Council	SAC; SPA;	Moderate	Good	Good	Good	2021 or earlier	Review			Lough Melvin and Drowes	LAWPRO, Restoration	View WB Page	View WB on EPA Water Map
36	UKGBNI1NW363601036	Black River	River	Leitrim County Council		Unassigned	Moderate	Moderate	Good	2022-2027	At risk	Nutrients, Organic	Ag			View WB Page	View WB on EPA Water Map
36	UKGBNI1NW363601084	Cladagh River	River	Cavan County Council	SAC;	Unassigned	Good	Good	Good	2021 or earlier	Not at risk					View WB Page	View WB on EPA Water Map
36	UKGBNI1NW363602029	Derryhooley Tributary	River	Cavan County Council		Unassigned	Good	Unassigned	Good	Unknown	Review					View WB Page	View WB on EPA Water Map
36	UKGBNI1NW363602063	Upper Lough Erne	River	Cavan County Council	SAC;	Unassigned	Poor	Poor	Good	2022-2027	Review					View WB Page	View WB on EPA Water Map
36	UKGBNI1NW363602088	Termon River (Tullynamaltra)	River	Donegal County Council	SAC;	Unassigned	Good	Good	Good	2021 or earlier	Not at risk					View WB Page	View WB on EPA Water Map
36	UKGBNI1NW363602092	Belcoo River	River	Leitrim County Council		Unassigned	Good	Good	Good	2021 or earlier	Not at risk			Lough Macnean	LAWPRO, Restoration	View WB Page	View WB on EPA Water Map
36	UKGBNI1NW363602093	Drumharriff Burn	River	Cavan County Council		Unassigned	Moderate	Good	Good	2021 or earlier	Review			Lough Macnean	LAWPRO, Restoration	View WB Page	View WB on EPA Water Map
36	UKGBNI1NW363602095	Owengarr River	River	Cavan County Council		Unassigned	Good	Good	Good	2021 or earlier	Not at risk					View WB Page	View WB on EPA Water Map
36	UKGBNI1NW363604053	Colebrooke River (Cooneen)	River	Monaghan County Council		Unassigned	Good	Good	Good	2021 or earlier	Not at risk					View WB Page	View WB on EPA Water Map
36	UKGBNI1NW363604054	Swanlinbar River	River	Cavan County Council	SAC;	Unassigned	Moderate	Good	Good	2021 or earlier	Review					View WB Page	View WB on EPA Water Map
36	UKGBNI1NW363604064	Termon River (Pettigoe)	River	Donegal County Council	SAC;	Unassigned	Good	Good	Good	2021 or earlier	Review					View WB Page	View WB on EPA Water Map
36	UKGBNI1NW363604066	Lackey River_010	River	Monaghan County Council	SAC;	Unassigned	Moderate	Moderate	Good	2022-2027	At risk	Nutrients, Organic	UR, Ag	Kilroosky Lough Cluster	LAWPRO, Restoration	View WB Page	View WB on EPA Water Map
36	UKGBNI1NW363604067	Starraghen Tributary	River	Monaghan County Council		Unassigned	Poor	Poor	Good	2022-2027	At risk	Nutrients	Ag			View WB Page	View WB on EPA Water Map
36	UKGBNI1NW363604072	Garvary River	River	Donegal County Council	SAC;	Unassigned	Good	Good	Good	2021 or earlier	Not at risk					View WB Page	View WB on EPA Water Map
36	UKGBNI1NW363604078	WATERFOOT_010	River	Donegal County Council	SAC;	Good	Moderate	Good	Good	2021 or earlier	Not at risk					View WB Page	View WB on EPA Water Map
36	UKGBNI1NW363604079	Finn River (Tattymore)	River	Monaghan County Council		Good	Poor	Poor	Good	2022-2027	At risk	Chemical, Organic	Ag, DWTS			View WB Page	View WB on EPA Water Map
36	UKGBNI1NW363604080	FINN (MONAGHAN)_050	River	Monaghan County Council	SAC;	Poor	Poor	Poor	Good	2022-2027	At risk	Nutrients	Ag			View WB Page	View WB on EPA Water Map
36	UKGBNI1NW363604081	ERNE_110	River	Cavan County Council	SAC;	Unassigned	Good	Good	Good	2021 or earlier	Review					View WB Page	View WB on EPA Water Map
36	UKGBNI1NW363604083	Woodford River	River	Cavan County Council	SAC;	Unassigned	Good	Good	Good	2021 or earlier	Not at risk					View WB Page	View WB on EPA Water Map
36	UKGBNI1NW363604084	FINN (MONAGHAN)_010	River	Monaghan County Council		Moderate	Poor	Moderate	Good	2022-2027	At risk	Sediment, Nutrients	Ag			View WB Page	View WB on EPA Water Map

36	UKGBN11NW363604085	Erne	River	Donegal County Council	SAC; SPA;	Moderate	Moderate	Moderate	Good	2022-2027	At risk	Hydrological, Morphological, Chemical, UnknownImpactType	HYMO, Ag, IS			View WB Page	View WB on EPA Water Map
36	IE_NW_010_0100	Duff Estuary	Transitional	Leitrim County Council	SAC;	Unassigned	High	High	Good	2021 or earlier	Not at risk					View WB Page	View WB on EPA Water Map
36	IE_NW_020_0100	Drowes Estuary	Transitional	Donegal County Council	SAC; SPA;	Unassigned	High	High	Good	2021 or earlier	Not at risk					View WB Page	View WB on EPA Water Map
36	IE_NW_030_0100	Erne Estuary	Transitional	Donegal County Council	SPA;	Moderate	Good	Good	Good	2021 or earlier	Not at risk					View WB Page	View WB on EPA Water Map