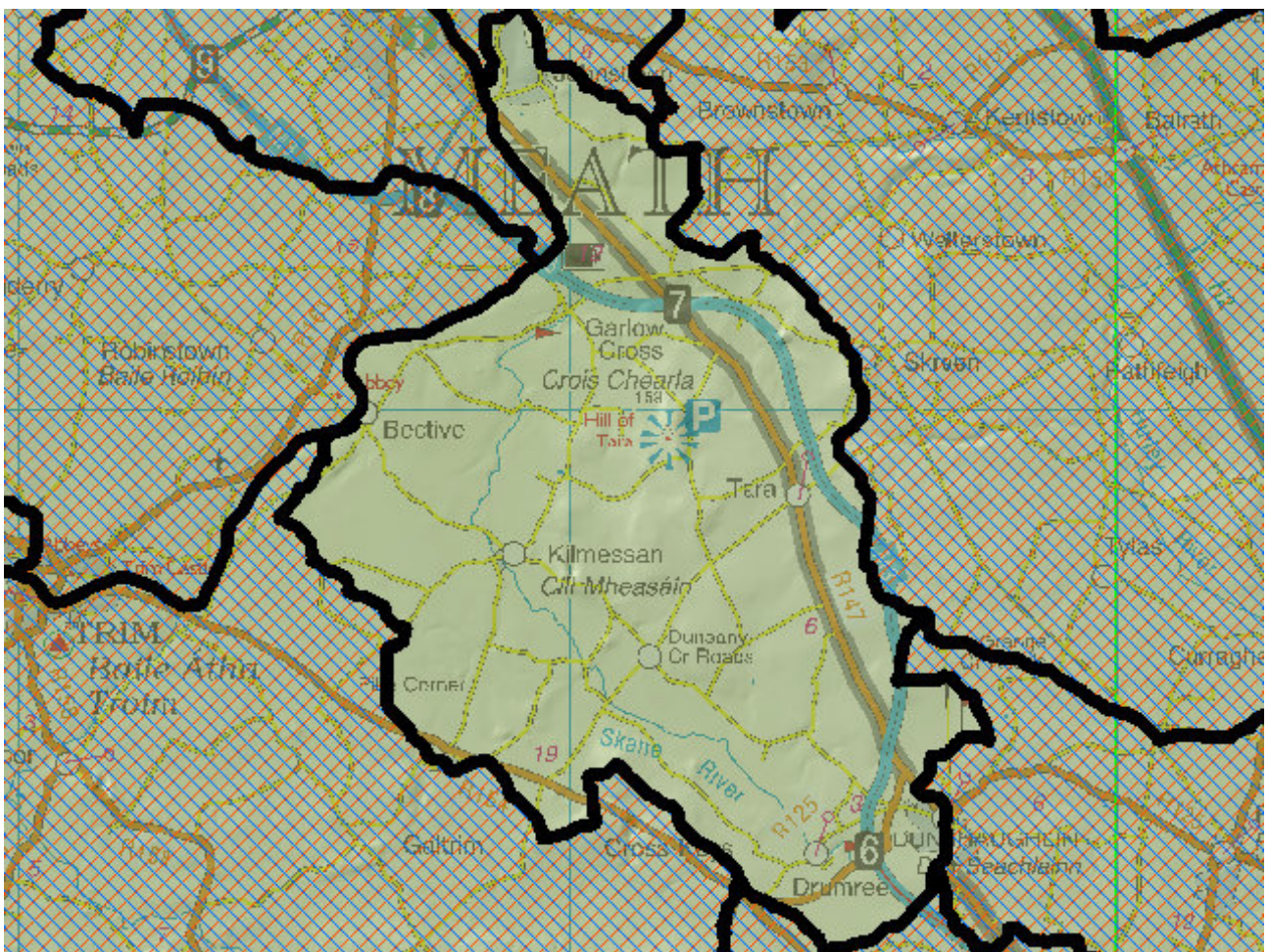


# WFD Cycle 2

Catchment Boyne

Subcatchment Boyne\_SC\_090

Code 07\_19



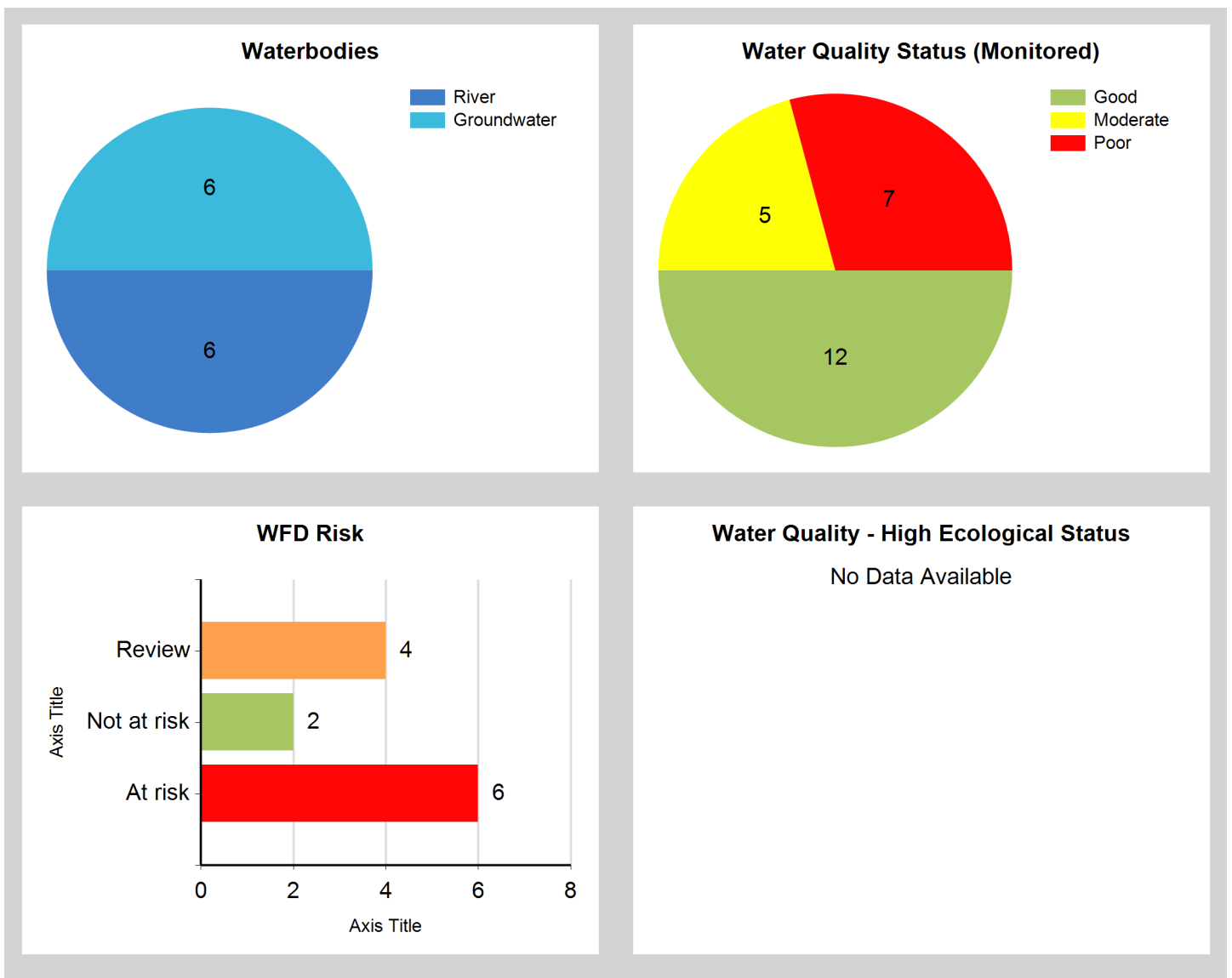
© Ordnance Survey Ireland. All rights reserved. Licence Number EN 0059208

Generated on: 19 Dec 2018

## Assessment Purpose

This assessment has been produced as part of the national characterisation programme undertaken for the second cycle of Water Framework Directive river basin management planning. It has been led by the EPA, with input from Local Authorities and other public bodies, and with support from RPS consultants.

The characterisation assessments are automatically generated from the information stored in the WFD Application. They are based on information available to the end of 2015 but may be subject to change until the final 2018-21 river basin management plan is published. Users should ensure that they have the most up to date information by downloading the latest assessment before use.

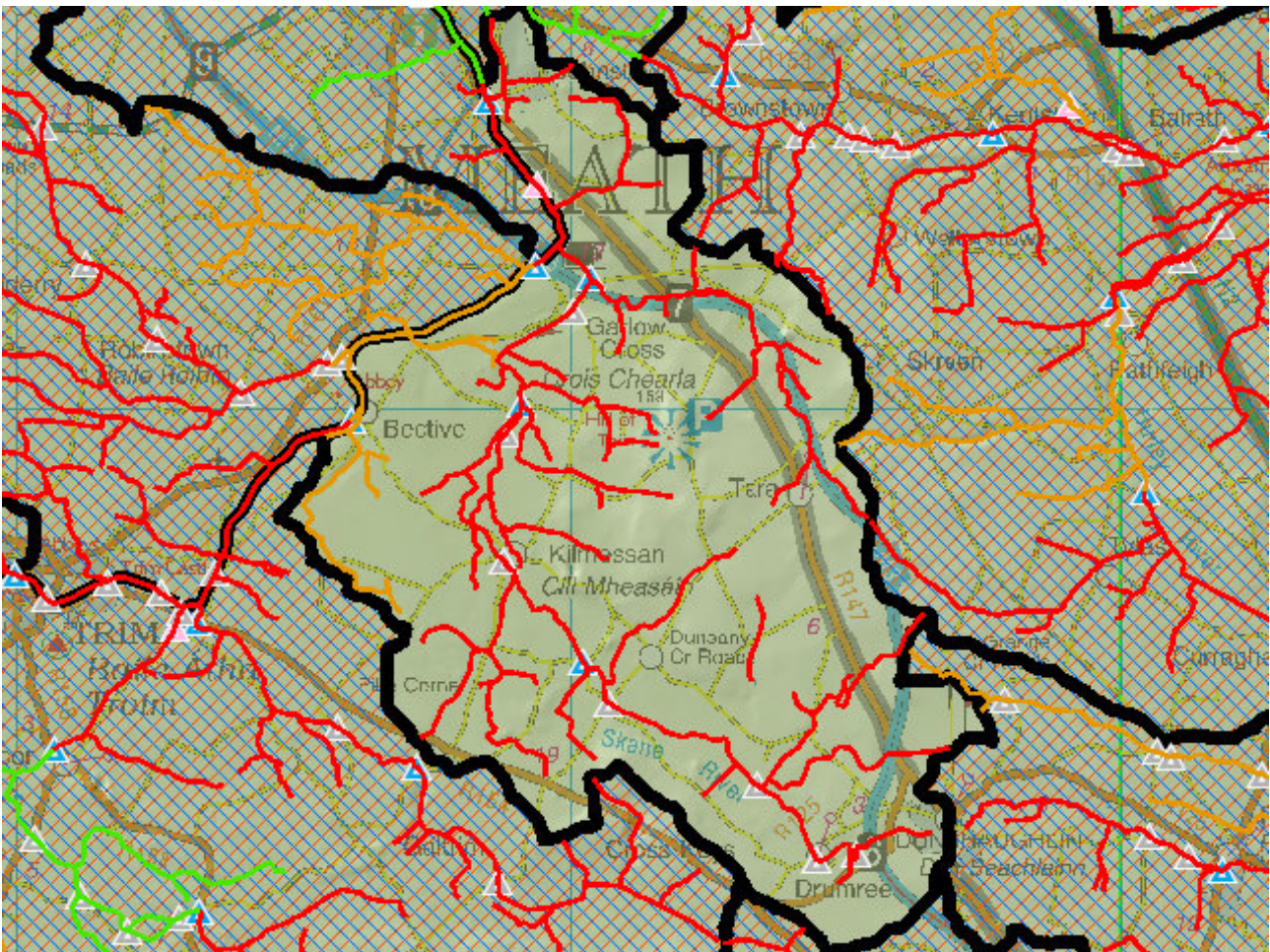


## Evaluation of Priority Subcatchment Issues

Five out of six river water bodies are AT RISK: Skane\_010 due to recent SSRS results; Skane\_020 due to Poor biological status and elevated ammonia; Skane\_030 and Skane\_040 due to Poor biological status; Boyne\_120 due to Moderate biological status. Boyne\_110 is under REVIEW due to its unassigned status.

The upper reaches of the Skane main channel has pressures impacting upon it, and as a result they are impacting the whole of the main channel. The main pressure in the upper reaches is suspected to be wastewater. Throughout the sub-catchment, agricultural activities are a pressure (including farmyards, tillage and animal access). Boyne\_120 has a number of inputting water bodies, including the Skane main channel, and it is likely that the status of Boyne\_120 is impacted upon by upstream issues.

## Map Subcatchment Risk Map

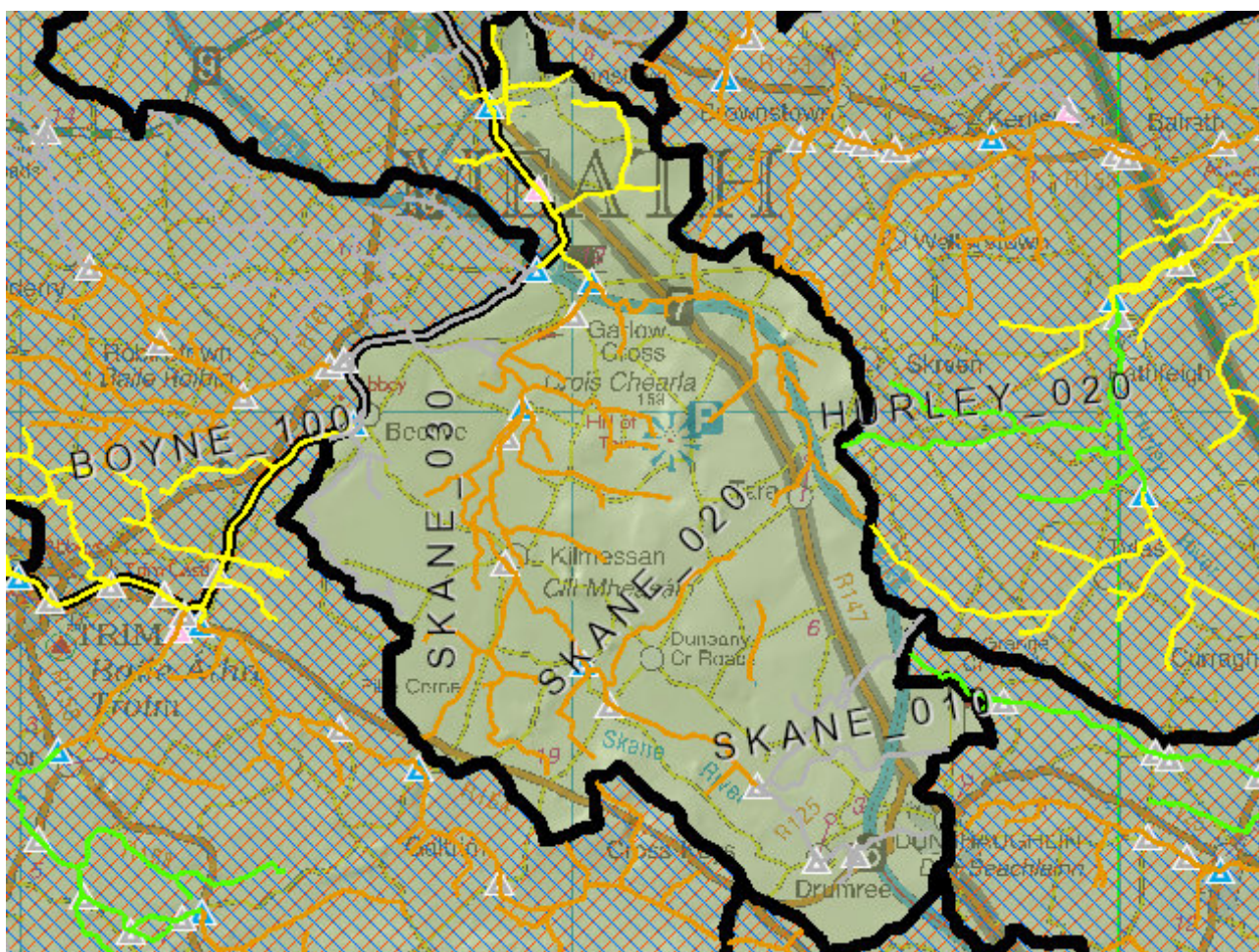


## River And Lake Waterbodies: WFD Risk

The following river and lake waterbodies are in the subcatchment.

Code	Name	Type	WFD Risk	Significant Pressure
IE_EA_07B041700	BOYNE_120	River	At risk	Yes
IE_EA_07S010150	SKANE_010	River	At risk	Yes
IE_EA_07S010300	SKANE_020	River	At risk	Yes
IE_EA_07S010510	SKANE_030	River	At risk	Yes
IE_EA_07S010600	SKANE_040	River	At risk	Yes
IE_EA_07B041600	BOYNE_110	River	Review	Yes

## Map Subcatchment Water Quality Status Map



## River And Lake Waterbodies: Water Quality Status

The water quality status of river and lake waterbodies in the subcatchment is as follows.

Code	Name	Type	2007-09	2010-12	2010-15
IE_EA_07B041600	BOYNE_110	River	Unassigned	Unassigned	Unassigned
IE_EA_07B041700	BOYNE_120	River	Moderate	Moderate	Moderate
IE_EA_07S010150	SKANE_010	River	Unassigned	Unassigned	Unassigned
IE_EA_07S010300	SKANE_020	River	Poor	Poor	Poor
IE_EA_07S010510	SKANE_030	River	Poor	Moderate	Poor
IE_EA_07S010600	SKANE_040	River	Poor	Moderate	Poor

## Potentially Dependent Transitional and Coastal Waterbodies

The Transitional and Coastal waterbodies listed below intersect spatially with river and lake waterbodies in the subcatchment ...

Code	Name	Type	Local Authority	WFD Risk
------	------	------	-----------------	----------

## Potentially Dependent Groundwater Waterbodies

The groundwaters listed below intersect spatially with river and lake waterbodies in the subcatchment ...

Code	Name	Type	Local Authority	WFD Risk
IE_EA_G_002	Trim	Groundwater	Meath County Council	At risk
IE_EA_G_014	Lusk-Bog of the Ring	Groundwater	Fingal County Council	Not at risk
IE_EA_G_019	Moynalvy	Groundwater	Meath County Council	Review
IE_EA_G_020	Realtage	Groundwater	Meath County Council	Review
IE_EA_G_028	Hill of Tara	Groundwater	Meath County Council	Review
IE_EA_G_031	Dunshaughlin	Groundwater	Meath County Council	Not at risk

## Protected Areas intersecting River and Lake Waterbodies

The Protected Areas listed below intersect spatially with river and lake waterbodies in the subcatchment ...

Code	Name	Type	Waterbody Name	Association Type
IEPA1_EA_07B041700	BOYNE_120	Drinking Water	BOYNE_120	Within Protected Area
IEPA5D0004	River Boyne	Salmonid	BOYNE_120	Overlapping / partly within Protected Area
IEPA5D0004	River Boyne	Salmonid	BOYNE_110	Overlapping / partly within Protected Area

## Pressures

Below is a list of all significant pressures identified in the subcatchment.

Code	Name	WFD Risk	Pressure Category	Pressure Sub Category
IE_EA_07B041700	BOYNE_120	At risk	Urban Waste Water	Agglomeration PE of 2,001 to 10,000
IE_EA_07B041700	BOYNE_120	At risk	Agriculture	Agriculture
IE_EA_07S010150	SKANE_010	At risk	Domestic Waste Water	Waste Water discharge
IE_EA_07S010300	SKANE_020	At risk	Domestic Waste Water	Waste Water discharge
IE_EA_07S010300	SKANE_020	At risk	Agriculture	Arable
IE_EA_07S010510	SKANE_030	At risk	Hydromorphology	Channelisation
IE_EA_07S010510	SKANE_030	At risk	Domestic Waste Water	Waste Water discharge
IE_EA_07S010600	SKANE_040	At risk	Agriculture	Farmyards
IE_EA_07S010600	SKANE_040	At risk	Urban Waste Water	Combined Sewer Overflows
IE_EA_G_002	Trim	At risk	Domestic Waste Water	Waste Water discharge
IE_EA_G_002	Trim	At risk	Agriculture	Agriculture
IE_EA_07B041600	BOYNE_110	Review	Agriculture	Agriculture
IE_EA_07B041600	BOYNE_110	Review	Hydromorphology	Channelisation
IE_EA_G_019	Moynalvy	Review	Anthropogenic Pressures	Unknown
IE_EA_G_020	Realtage	Review	Anthropogenic Pressures	Unknown
IE_EA_G_028	Hill of Tara	Review	Anthropogenic Pressures	Unknown

## Further Characterisation Actions

The following further characterisation actions have been identified. These are necessary to help understand more fully issues in the subcatchment and their likely cause.

Code	Name	Action	Responsible Organisation
IE_EA_07S010300	SKANE_020	IA7 Multiple Sources in Multiple Areas	Meath County Council
IE_EA_07S010600	SKANE_040	IA7 Multiple Sources in Multiple Areas	Meath County Council
IE_EA_07S010510	SKANE_030	IA7 Multiple Sources in Multiple Areas	Meath County Council
IE_EA_07S010150	SKANE_010	IA1 Provision of Information	Meath County Council
IE_EA_07B041700	BOYNE_120	IA1 Provision of Information	Meath County Council
IE_EA_07B041600	BOYNE_110	IA1 Provision of Information	Meath County Council
IE_EA_07B041600	BOYNE_110	IA1 Provision of Information	Environmental Protection Agency