

WFD Cycle 2

Catchment Ovoca-Vartry

Subcatchment Avoca_SC_010

Code 10_3



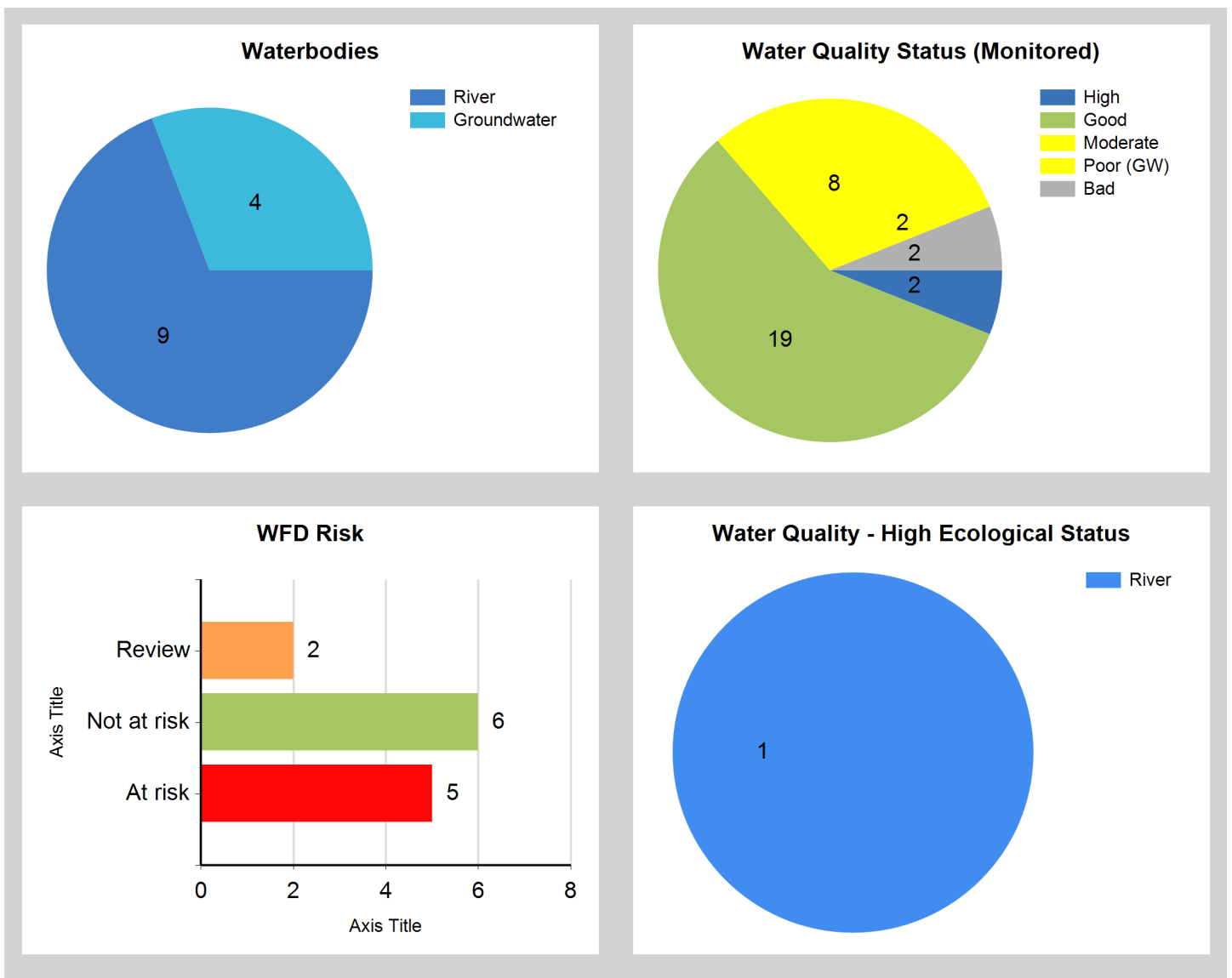
© Ordnance Survey Ireland. All rights reserved. Licence Number EN 0059208

Generated on: 07 Nov 2018

Assessment Purpose

This assessment has been produced as part of the national characterisation programme undertaken for the second cycle of Water Framework Directive river basin management planning. It has been led by the EPA, with input from Local Authorities and other public bodies, and with support from RPS consultants.

The characterisation assessments are automatically generated from the information stored in the WFD Application. They are based on information available to the end of 2015 but may be subject to change until the final 2018-21 river basin management plan is published. Users should ensure that they have the most up to date information by downloading the latest assessment before use.

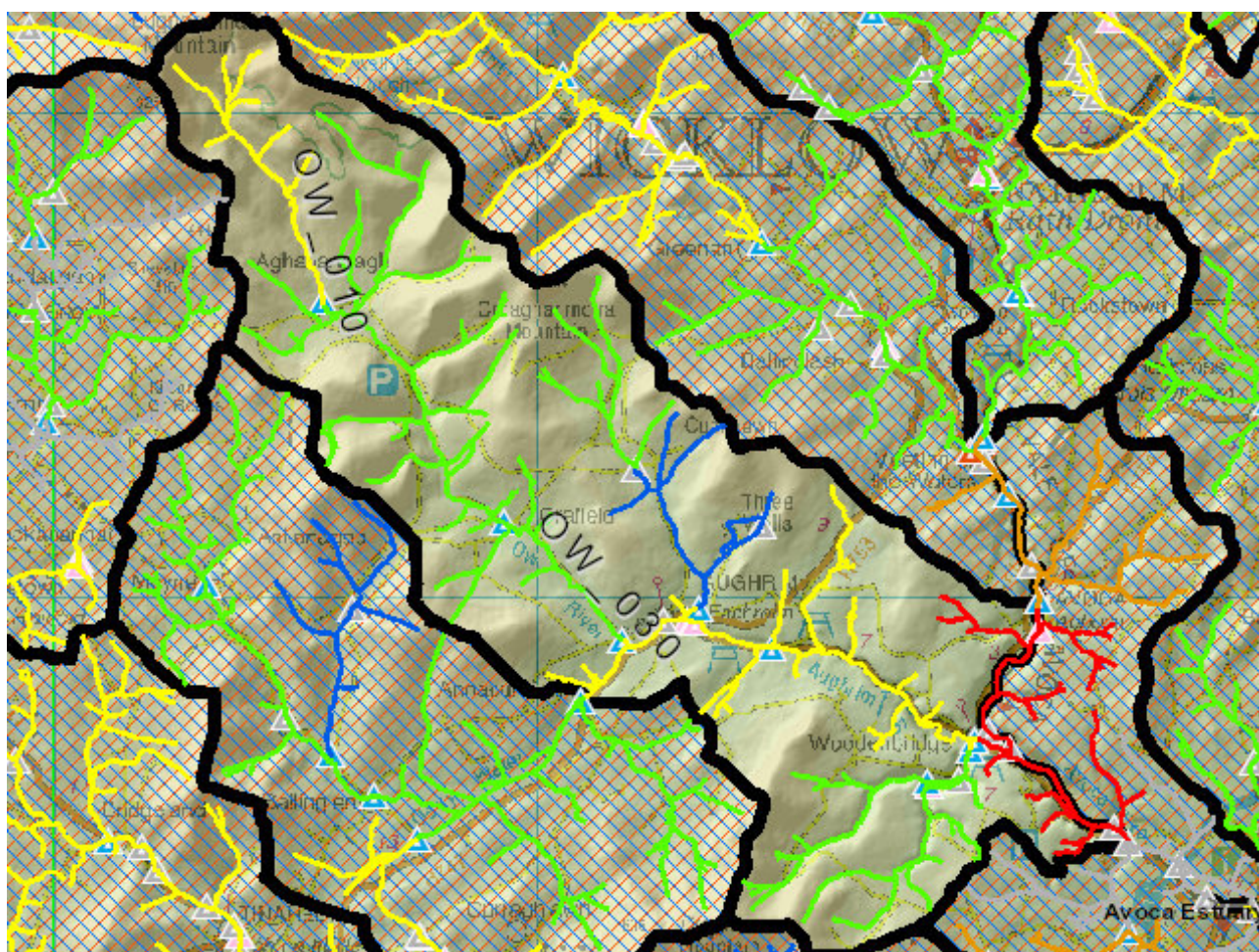


River And Lake Waterbodies: WFD Risk

The following river and lake waterbodies are in the subcatchment.

Code	Name	Type	WFD Risk	Significant Pressure
IE_EA_10A020200	AUGHRIM (WICKLOW)_010	River	At risk	Yes
IE_EA_10A020400	AUGHRIM (WICKLOW)_020	River	At risk	Yes
IE_EA_10A031050	AVOCA_020	River	At risk	Yes
IE_EA_10O010100	OW_010	River	At risk	Yes

Map Subcatchment Water Quality Status Map



River And Lake Waterbodies: Water Quality Status

The water quality status of river and lake waterbodies in the subcatchment is as follows.

Code	Name	Type	2007-09	2010-12	2010-15
IE_EA_10A020200	AUGHRIM (WICKLOW)_010	River	Good	Good	Moderate
IE_EA_10A020400	AUGHRIM (WICKLOW)_020	River	Good	Moderate	Moderate
IE_EA_10A031050	AVOCA_020	River	Unassigned	Bad	Bad
IE_EA_10B020400	BALLYCREEN BROOK_010	River	Good	Good	Good
IE_EA_10B020700	BALLYCREEN BROOK_020	River	Moderate	High	High
IE_EA_10G040500	GOLD MINE_010	River	Good	Good	Good
IE_EA_10O010100	OW_010	River	Moderate	Moderate	Moderate
IE_EA_10O010300	OW_020	River	Moderate	Good	Good
IE_EA_10O010400	OW_030	River	Unassigned	Good	Good

Potentially Dependent Transitional and Coastal Waterbodies

The Transitional and Coastal waterbodies listed below intersect spatially with river and lake waterbodies in the subcatchment ...

Code	Name	Type	Local Authority	WFD Risk
------	------	------	-----------------	----------

Potentially Dependent Groundwater Waterbodies

The groundwaters listed below intersect spatially with river and lake waterbodies in the subcatchment ...

Code	Name	Type	Local Authority	WFD Risk
IE_EA_G_076	Wicklow	Groundwater	Wicklow County Council	Review
IE_EA_G_080	Historic Mine (Avoca)	Groundwater	Wicklow County Council	At risk
IE_SE_G_011	Ballyglass	Groundwater	Wicklow County Council	Review
IE_SE_G_075	Inch	Groundwater	Wexford County Council	Not at risk

Protected Areas intersecting River and Lake Waterbodies

The Protected Areas listed below intersect spatially with river and lake waterbodies in the subcatchment ...

Code	Name	Type	Waterbody Name	Association Type
IEPA1_EA_10A020400	AUGHRIM (WICKLOW)_020	Drinking Water	AUGHRIM (WICKLOW)_020	Within Protected Area
IEPA1_EA_10B020700	BALLYCREEN BROOK_020	Drinking Water	BALLYCREEN BROOK_020	Within Protected Area

Pressures

Below is a list of all significant pressures identified in the subcatchment.

Code	Name	WFD Risk	Pressure Category	Pressure Sub Category
IE_EA_10A020200	AUGHRIM (WICKLOW)_010	At risk	Urban Run-off	Diffuse Sources Run-Off
IE_EA_10A020400	AUGHRIM (WICKLOW)_020	At risk	Aquaculture	Aquaculture
IE_EA_10A031050	AVOCA_020	At risk	Historically Polluted Sites	Mines
IE_EA_10A031050	AVOCA_020	At risk	Urban Waste Water	Agglomeration PE of 500 to 1,000
IE_EA_10O010100	OW_010	At risk	Forestry	Forestry
IE_EA_G_080	Historic Mine (Avoca)	At risk	Historically Polluted Sites	Mines
IE_EA_G_076	Wicklow	Review	Anthropogenic Pressures	Unknown
IE_SE_G_011	Ballyglass	Review	Anthropogenic Pressures	Unknown

Further Characterisation Actions

The following further characterisation actions have been identified. These are necessary to help understand more fully issues in the subcatchment and their likely cause.

Code	Name	Action	Responsible Organisation
IE_EA_10A031050	AVOCA_020	IA1 Provision of Information	Inland Fisheries Ireland
IE_EA_10A031050	AVOCA_020	IA1 Provision of Information	Department of Housing, Planning and Local Government
IE_EA_10A020400	AUGHRIM (WICKLOW)_020	IA4 Regulated Point Sources	Wicklow County Council
IE_EA_10A020400	AUGHRIM (WICKLOW)_020	IA1 Provision of Information	Irish Water
IE_EA_10A020200	AUGHRIM (WICKLOW)_010	IA5 Multiple Sources in defined rural area (1km) or waterbody or rural town	Wicklow County Council
IE_EA_10O010100	OW_010	IA1 Provision of Information	Environmental Protection Agency
IE_EA_10A031050	AVOCA_020	IA1 Provision of Information	Irish Water
IE_EA_10O010100	OW_010	IA1 Provision of Information	Department of Agriculture, Food and the Marine