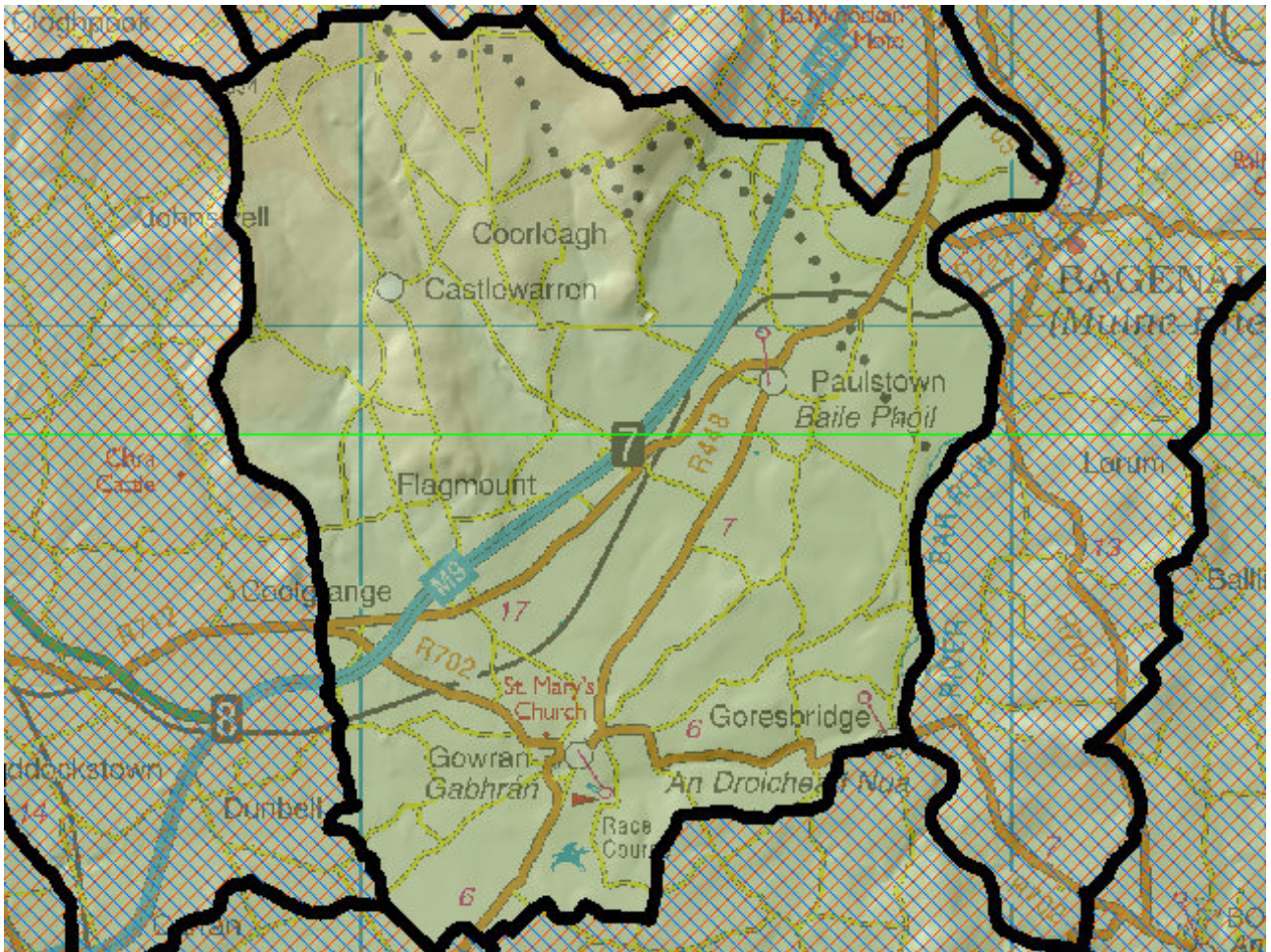


WFD Cycle 2

Catchment Barrow

Subcatchment Barrow_SC_120

Code 14_8



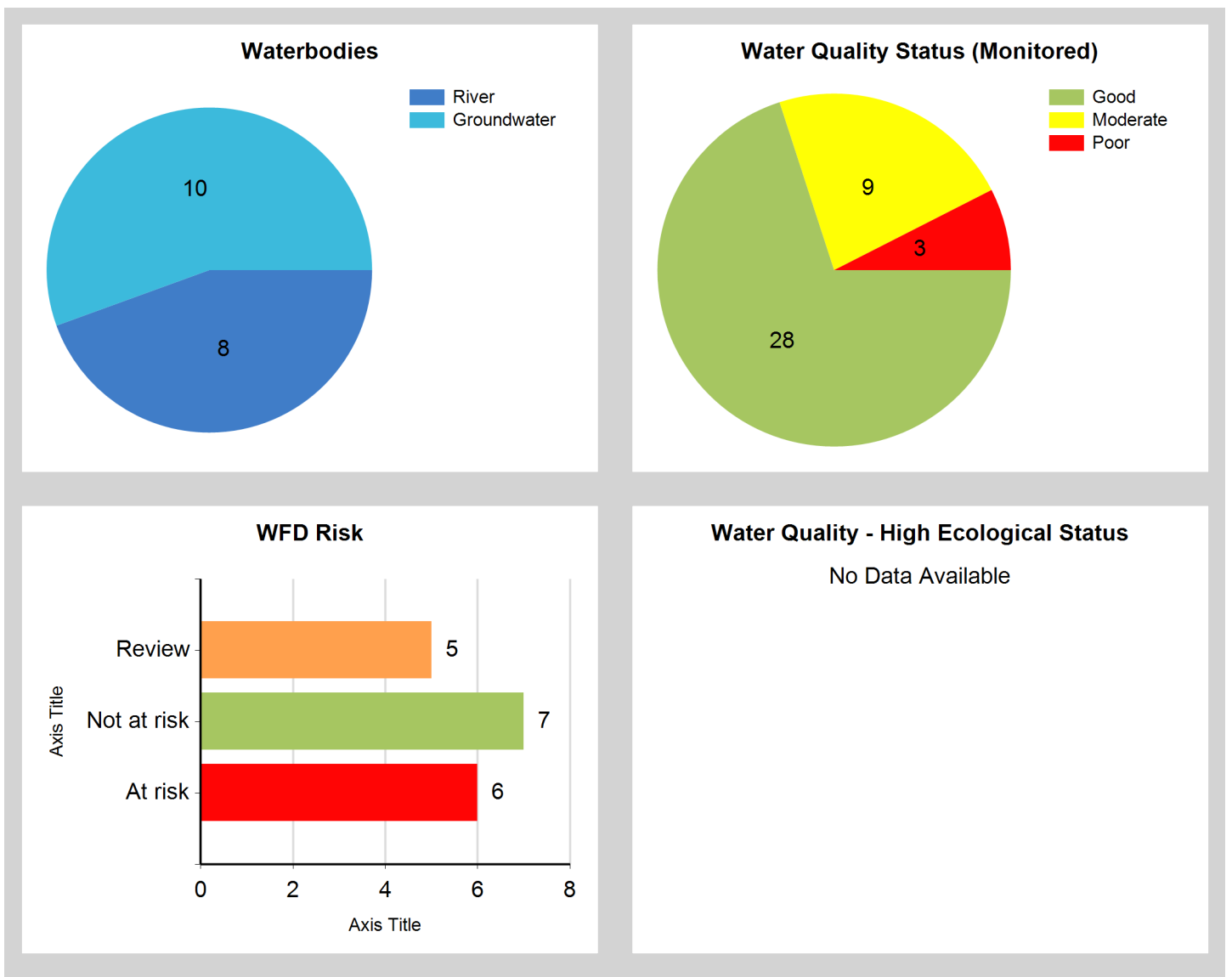
© Ordnance Survey Ireland. All rights reserved. Licence Number EN 0059208

Generated on: 03 Jan 2019

Assessment Purpose

This assessment has been produced as part of the national characterisation programme undertaken for the second cycle of Water Framework Directive river basin management planning. It has been led by the EPA, with input from Local Authorities and other public bodies, and with support from RPS consultants.

The characterisation assessments are automatically generated from the information stored in the WFD Application. They are based on information available to the end of 2015 but may be subject to change until the final 2018-21 river basin management plan is published. Users should ensure that they have the most up to date information by downloading the latest assessment before use.

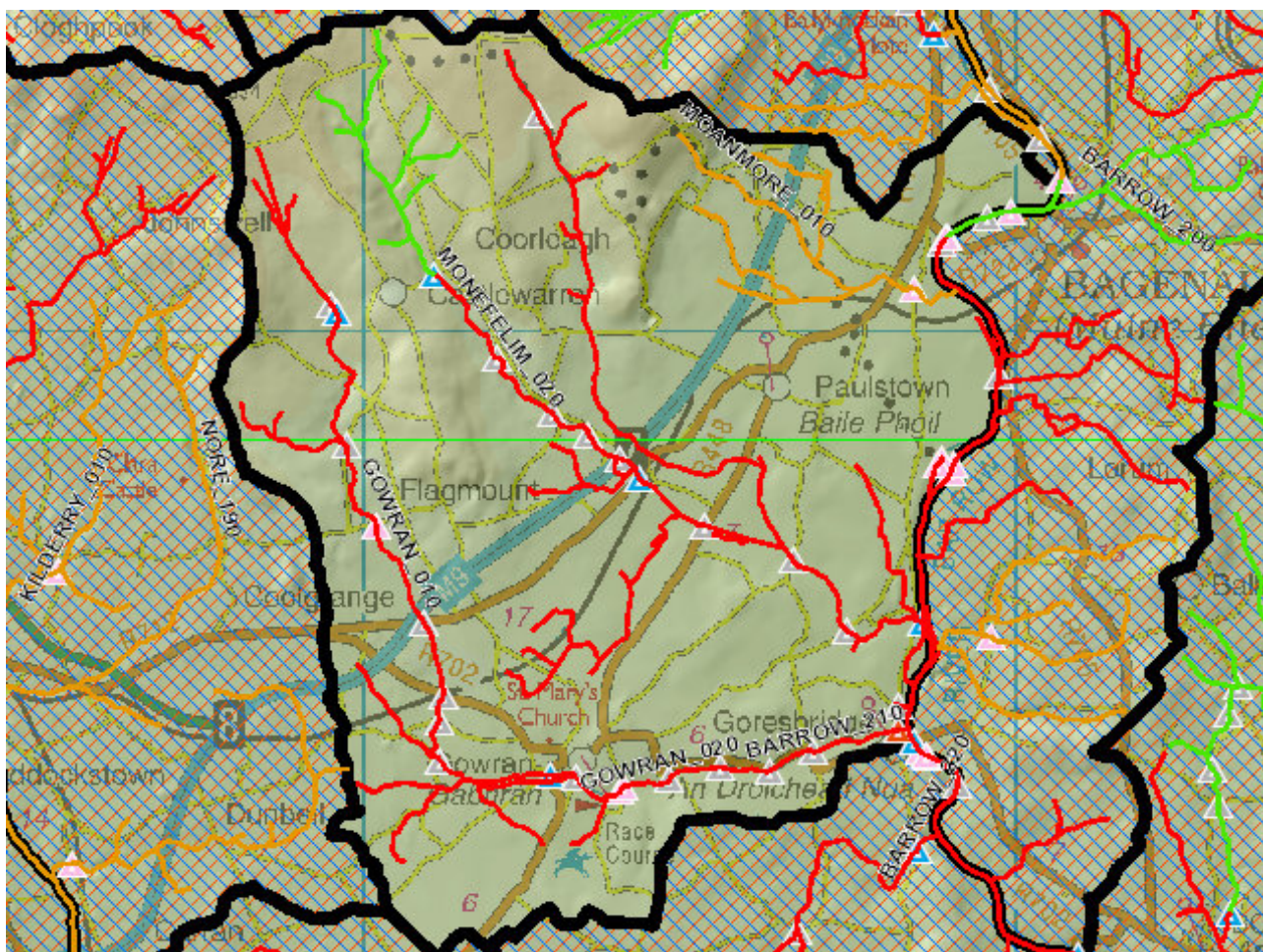


Evaluation of Priority Subcatchment Issues

Five out of eight (Barrow_210, Gowran_010, Gowran_020, Monefelim_020, Monefelim_030) are AT RISK due to less than Good ecological status including elevated phosphate levels within Barrow_210. Moanmore 14_010 is under REVIEW due to its unassigned status.

Diffuse urban pressures exist within Barrow_210 in addition to regulated point sources while in channel barriers may be impacting fish status. The Gowran_010, Gowran_020, Monefelim_020 and Monefelim_030 water bodies are subject to agricultural pressures.

Map Subcatchment Risk Map

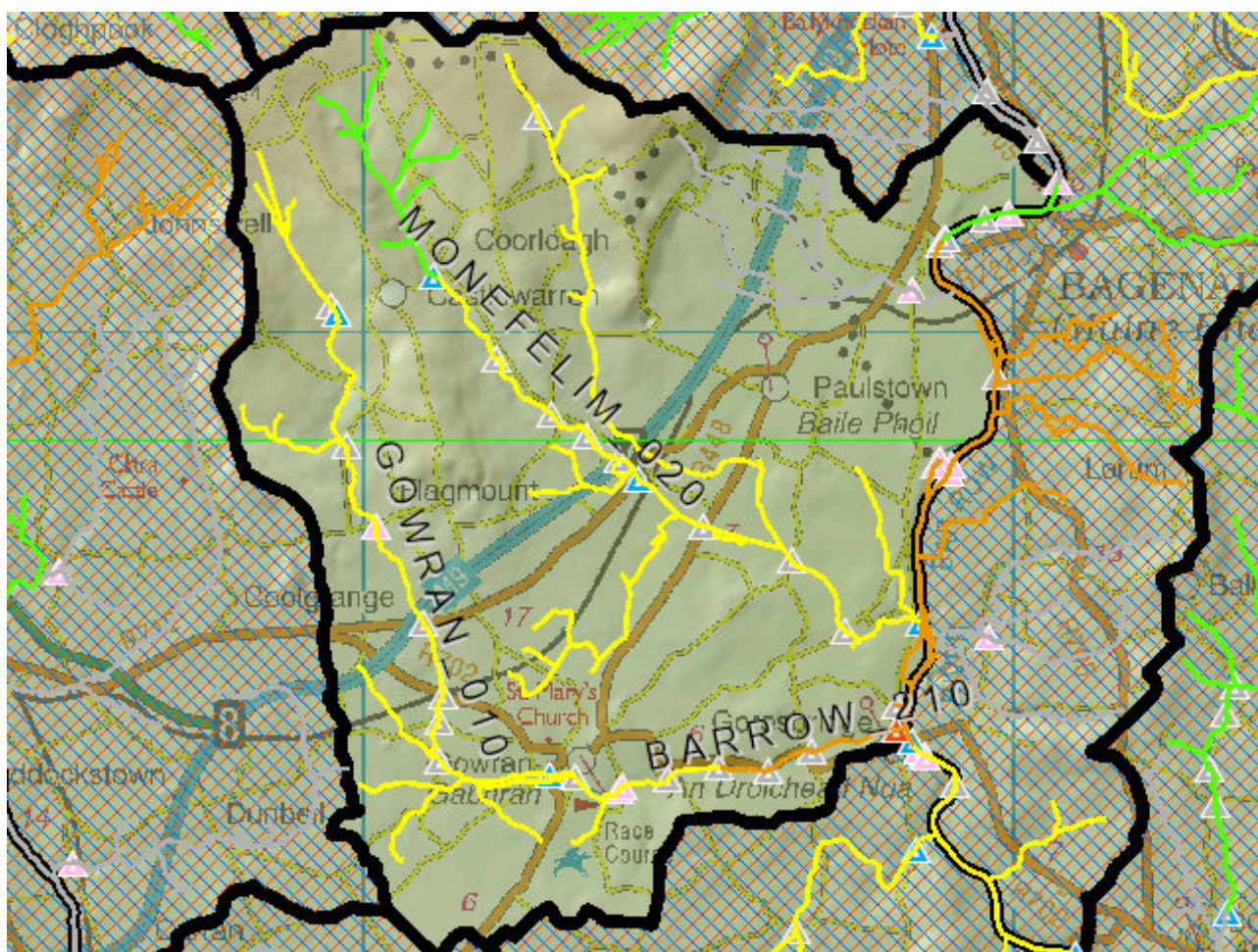


River And Lake Waterbodies: WFD Risk

The following river and lake waterbodies are in the subcatchment.

Code	Name	Type	WFD Risk	Significant Pressure
IE_SE_14B013100	BARROW_210	River	At risk	Yes
IE_SE_14G030100	GOWRAN_010	River	At risk	Yes
IE_SE_14G030220	GOWRAN_020	River	At risk	Yes
IE_SE_14M030600	MONEFELIM_020	River	At risk	Yes
IE_SE_14M031000	MONEFELIM_030	River	At risk	Yes
IE_SE_14M240860	MOANMORE_010	River	Review	Yes
IE_SE_14B012920	BARROW_200	River	Not at risk	Yes
IE_SE_14M030100	MONEFELIM_010	River	Not at risk	No

Map Subcatchment Water Quality Status Map



River And Lake Waterbodies: Water Quality Status

The water quality status of river and lake waterbodies in the subcatchment is as follows.

Code	Name	Type	2007-09	2010-12	2010-15
IE_SE_14B012920	BARROW_200	River	Good	Good	Good
IE_SE_14B013100	BARROW_210	River	Poor	Poor	Poor
IE_SE_14G030100	GOWRAN_010	River	Moderate	Moderate	Moderate
IE_SE_14G030220	GOWRAN_020	River	Unassigned	Moderate	Moderate
IE_SE_14M240860	MOANMORE_010	River	Unassigned	Unassigned	Unassigned
IE_SE_14M030100	MONEFELIM_010	River	Good	Good	Good
IE_SE_14M030600	MONEFELIM_020	River	Good	Good	Moderate
IE_SE_14M031000	MONEFELIM_030	River	Moderate	Moderate	Moderate

Potentially Dependent Transitional and Coastal Waterbodies

The Transitional and Coastal waterbodies listed below intersect spatially with river and lake waterbodies in the subcatchment ...

Code	Name	Type	Local Authority	WFD Risk
------	------	------	-----------------	----------

Potentially Dependent Groundwater Waterbodies

The groundwaters listed below intersect spatially with river and lake waterbodies in the subcatchment ...

Code	Name	Type	Local Authority	WFD Risk
IE_SE_G_009	Ballingarry	Groundwater	Kilkenny County Council	Review
IE_SE_G_021	Bennettsbridge	Groundwater	Kilkenny County Council	Review
IE_SE_G_034	Castlecomer	Groundwater	Kilkenny County Council	Not at risk
IE_SE_G_038	Clifden	Groundwater	Kilkenny County Council	Not at risk
IE_SE_G_078	Kilkenny	Groundwater	Kilkenny County Council	At risk
IE_SE_G_124	Shanragh	Groundwater	Laois County Council	Not at risk
IE_SE_G_157	Bagenalstown Lower	Groundwater	Carlow County Council	Review
IE_SE_G_160	Athy-Bagenalstown Gravels	Groundwater	Laois County Council	Not at risk
IE_SE_G_165	Goresbridge North	Groundwater	Kilkenny County Council	Review
IE_SE_G_166	Goresbridge South	Groundwater	Kilkenny County Council	Not at risk

Protected Areas intersecting River and Lake Waterbodies

The Protected Areas listed below intersect spatially with river and lake waterbodies in the subcatchment ...

Code	Name	Type	Waterbody Name	Association Type
IE0002162	River Barrow And River Nore SAC	SAC	BARROW_200	Overlapping / partly within Protected Area
IE0002162	River Barrow And River Nore SAC	SAC	BARROW_210	Overlapping / partly within Protected Area
IE0002162	River Barrow And River Nore SAC	SAC	MONFELIM_030	Overlapping / partly within Protected Area
IE0002162	River Barrow And River Nore SAC	SAC	MOANMORE_010	Overlapping / partly within Protected Area
IERI_SE_2001_0015	Barrow (River)	Nutrient Sensitive Area	BARROW_210	Overlapping / partly within Protected Area
IERI_SE_2001_0015	Barrow (River)	Nutrient Sensitive Area	BARROW_200	Overlapping / partly within Protected Area

Pressures

Below is a list of all significant pressures identified in the subcatchment.

Code	Name	WFD Risk	Pressure Category	Pressure Sub Category
IE_SE_14B013100	BARROW_210	At risk	Hydromorphology	Dams, barriers, locks, weirs
IE_SE_14B013100	BARROW_210	At risk	Urban Waste Water	Agglomeration PE of 2,001 to 10,000
IE_SE_14B013100	BARROW_210	At risk	Industry	Section 4
IE_SE_14B013100	BARROW_210	At risk	Urban Run-off	Diffuse Sources Run-Off
IE_SE_14G030100	GOWRAN_010	At risk	Agriculture	Agriculture
IE_SE_14G030220	GOWRAN_020	At risk	Agriculture	Agriculture
IE_SE_14M030600	MONFELIM_020	At risk	Agriculture	Pasture
IE_SE_14M031000	MONFELIM_030	At risk	Agriculture	Agriculture
IE_SE_G_078	Kilkenny	At risk	Agriculture	Agriculture
IE_SE_14M240860	MOANMORE_010	Review	Agriculture	Agriculture
IE_SE_G_009	Ballingarry	Review	Anthropogenic Pressures	Unknown
IE_SE_G_021	Bennettsbridge	Review	Anthropogenic Pressures	Unknown
IE_SE_G_157	Bagenalstown Lower	Review	Anthropogenic Pressures	Unknown
IE_SE_G_165	Goresbridge North	Review	Anthropogenic Pressures	Unknown

Further Characterisation Actions

The following further characterisation actions have been identified. These are necessary to help understand more fully issues in the subcatchment and their likely cause.

Code	Name	Action	Responsible Organisation
IE_SE_14M030600	MONEFELIM_020	IA7 Multiple Sources in Multiple Areas	Kilkenny County Council
IE_SE_14G030100	GOWRAN_010	IA7 Multiple Sources in Multiple Areas	Kilkenny County Council
IE_SE_14G030220	GOWRAN_020	IA7 Multiple Sources in Multiple Areas	Kilkenny County Council
IE_SE_14B013100	BARROW_210	IA1 Provision of Information	Inland Fisheries Ireland
IE_SE_14B013100	BARROW_210	IA5 Multiple Sources in defined rural area (1km) or waterbody or rural town	Kilkenny County Council
IE_SE_14M031000	MONEFELIM_030	IA7 Multiple Sources in Multiple Areas	Kilkenny County Council
IE_SE_14M240860	MOANMORE_010	IA3 Determination of Water Quality (unassigned waterbody)	Kilkenny County Council