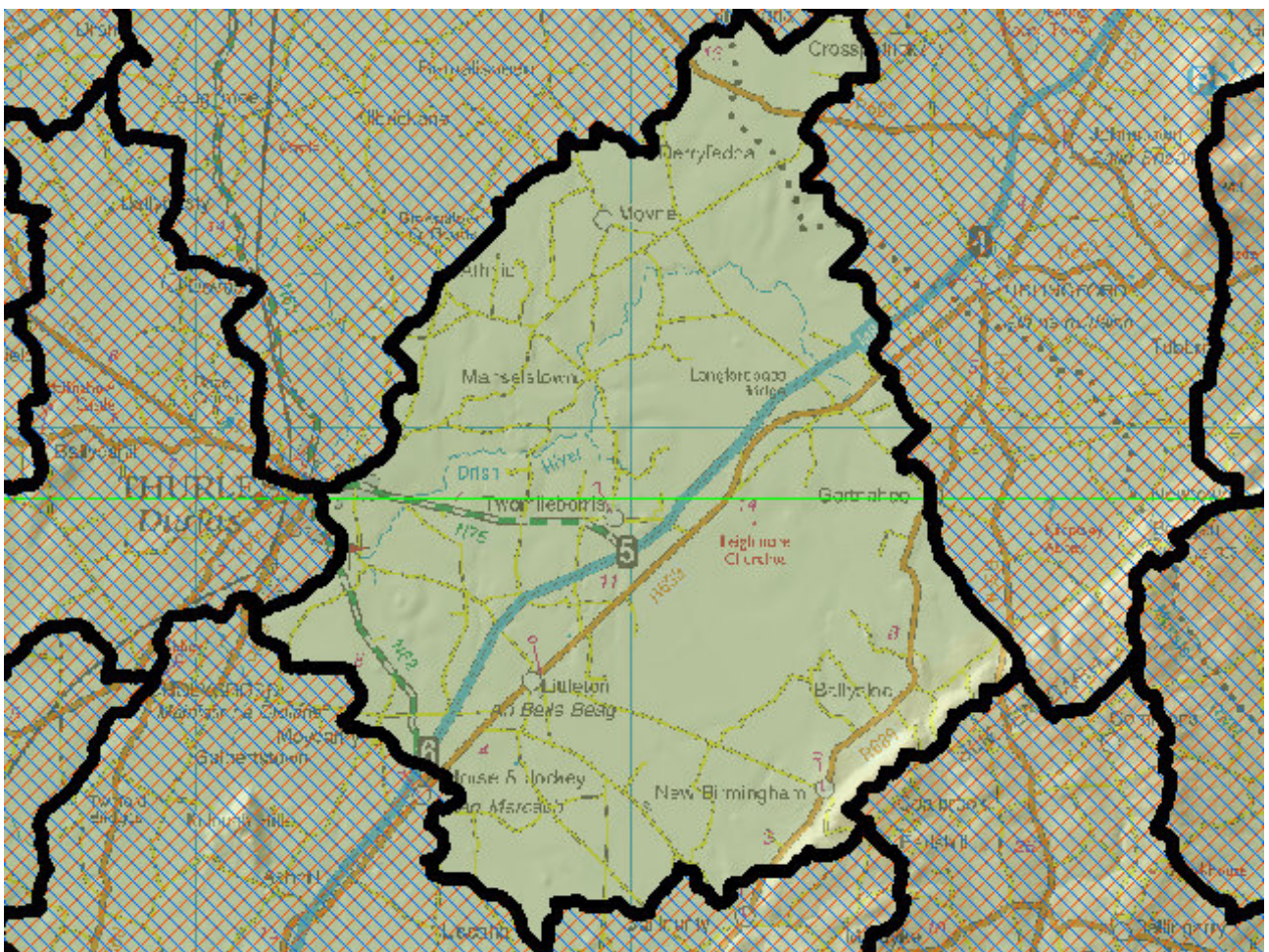


# WFD Cycle 2

Catchment Suir

Subcatchment Suir\_SC\_040

Code 16\_21



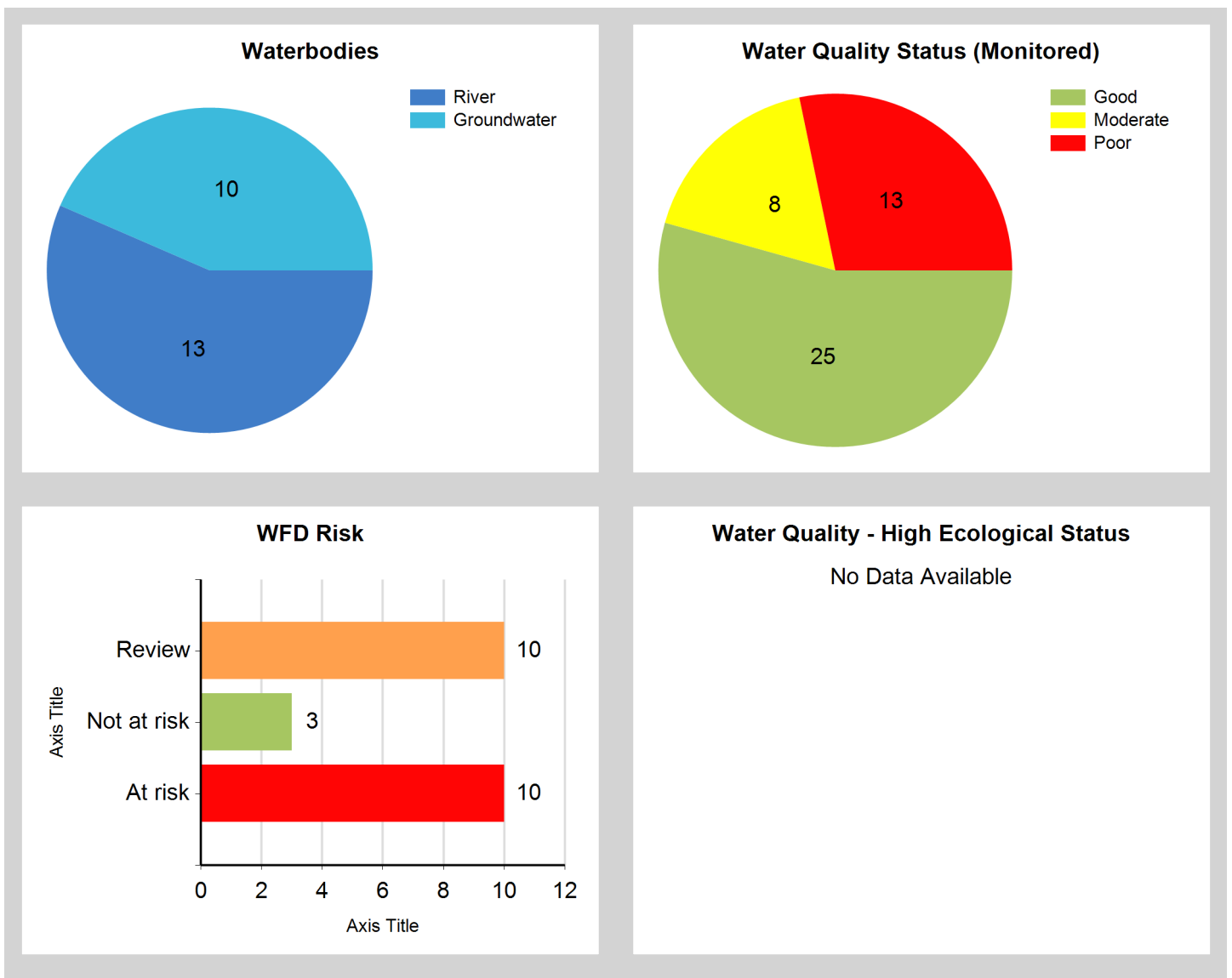
© Ordnance Survey Ireland. All rights reserved. Licence Number EN 0059208

Generated on: 04 Jan 2019

## Assessment Purpose

This assessment has been produced as part of the national characterisation programme undertaken for the second cycle of Water Framework Directive river basin management planning. It has been led by the EPA, with input from Local Authorities and other public bodies, and with support from RPS consultants.

The characterisation assessments are automatically generated from the information stored in the WFD Application. They are based on information available to the end of 2015 but may be subject to change until the final 2018-21 river basin management plan is published. Users should ensure that they have the most up to date information by downloading the latest assessment before use.



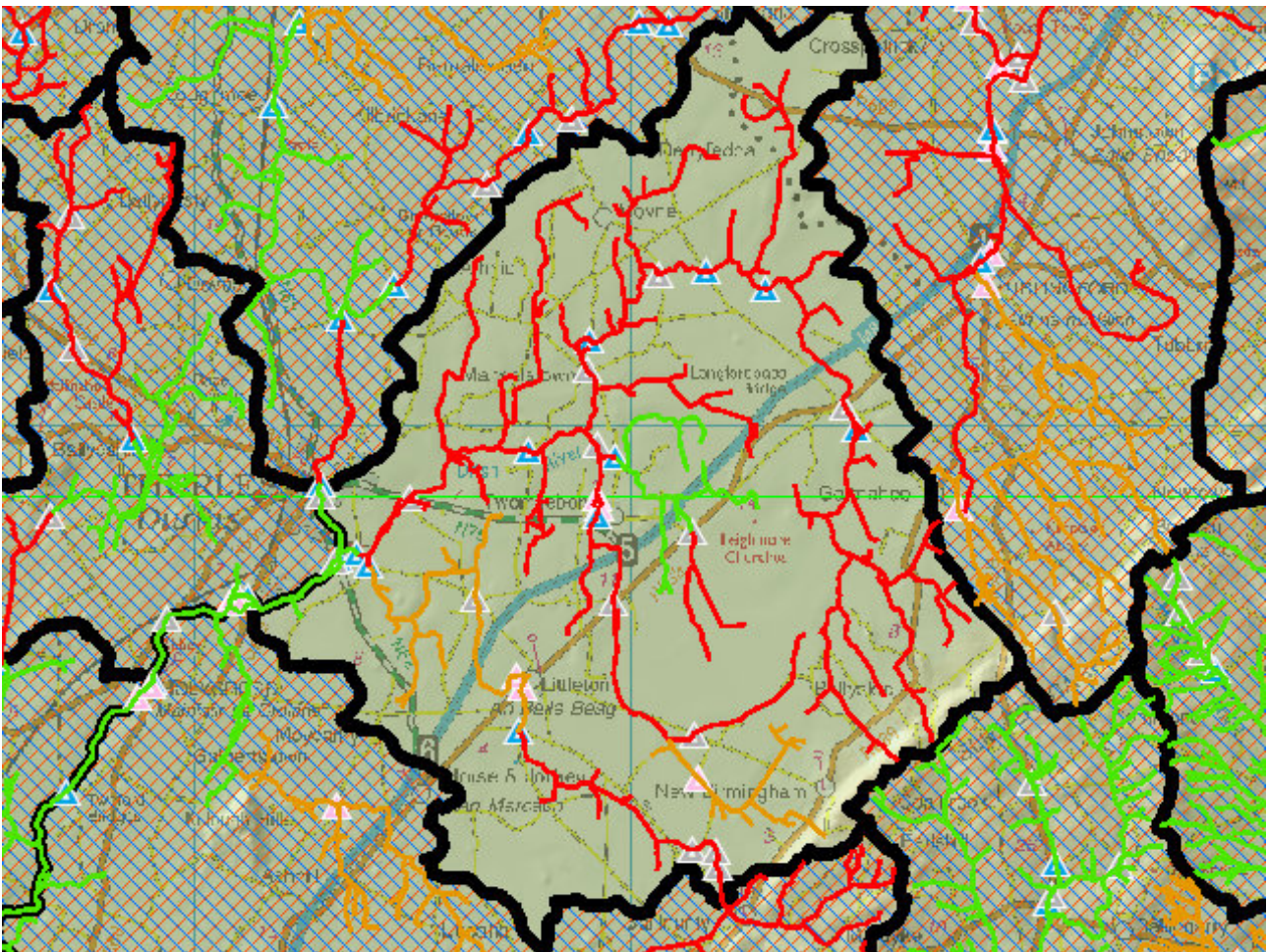
## Evaluation of Priority Subcatchment Issues

The macroinvertebrate data indicates that the biological quality in the upper and middle reaches of the Drish is generally Poor (Drish\_010, Drish\_030 and Drish\_040), elevated ammonia is also observed in Drish\_020, Drish\_030 and Drish\_040. The biology and water quality of Drish\_010 to 040 appear to be influenced by peat harvesting and discharge from a mine. The EPA is due to examine the mine discharge licence and remediation plans.

In the upper (Drish\_010) and lower (Drish\_050) reaches of the River Drish, water quality may also be influenced by two wastewater treatment plants. Tipperary County Council is due to complete an investigative assessment into the operation and possible impact on water quality of the wastewater treatment plants in each RWB.

On the Breagagh (Tipperary)\_010 and 020, there are no biological data available. Water quality data indicates elevated phosphate and ammonia on Breagagh (Tipperary)\_010 and elevated phosphate on Breagagh (Tipperary)\_020. Tipperary County Council are due to complete an investigative assessment to identify pollution sources on Breagagh (Tipperary)\_010.

## Map Subcatchment Risk Map



## River And Lake Waterbodies: WFD Risk

The following river and lake waterbodies are in the subcatchment.

Code	Name	Type	WFD Risk	Significant Pressure
IE_SE_16B010100	BLACK (TWO MILE BORRIS)_010	River	At risk	Yes
IE_SE_16B030200	BREAGAGH (TIPPERARY)_010	River	At risk	Yes
IE_SE_16C040100	CLOVER_010	River	At risk	Yes
IE_SE_16D020040	DRISH_010	River	At risk	Yes
IE_SE_16D020068	DRISH_020	River	At risk	Yes
IE_SE_16D020070	DRISH_030	River	At risk	Yes
IE_SE_16D020100	DRISH_040	River	At risk	Yes
IE_SE_16D020200	DRISH_050	River	At risk	Yes
IE_SE_16D020400	DRISH_060	River	At risk	Yes
IE_SE_16B030400	BREAGAGH (TIPPERARY)_020	River	Review	Yes
IE_SE_16N280780	North Glengoose_010	River	Review	Yes



## River And Lake Waterbodies: Water Quality Status

The water quality status of river and lake waterbodies in the subcatchment is as follows.

Code	Name	Type	2007-09	2010-12	2010-15
IE_SE_16B010100	BLACK (TWO MILE BORRIS)_010	River	Moderate	Good	Moderate
IE_SE_16B030200	BREAGAGH (TIPPERARY)_010	River	Unassigned	Unassigned	Unassigned
IE_SE_16B030400	BREAGAGH (TIPPERARY)_020	River	Unassigned	Unassigned	Unassigned
IE_SE_16C040100	CLOVER_010	River	Unassigned	Poor	Poor
IE_SE_16C040300	CLOVER_020	River	Good	Good	Good
IE_SE_16D020040	DRISH_010	River	Poor	Moderate	Poor
IE_SE_16D020068	DRISH_020	River	Unassigned	Unassigned	Unassigned
IE_SE_16D020070	DRISH_030	River	Poor	Poor	Poor
IE_SE_16D020100	DRISH_040	River	Poor	Poor	Poor
IE_SE_16D020200	DRISH_050	River	Poor	Moderate	Moderate
IE_SE_16D020400	DRISH_060	River	Poor	Moderate	Moderate
IE_SE_16N280780	North Glengoole_010	River	Unassigned	Unassigned	Unassigned
IE_SE_16S020900	SUIR_070	River	Poor	Moderate	Good

## Potentially Dependent Transitional and Coastal Waterbodies

The Transitional and Coastal waterbodies listed below intersect spatially with river and lake waterbodies in the subcatchment ...

Code	Name	Type	Local Authority	WFD Risk
------	------	------	-----------------	----------

## Potentially Dependent Groundwater Waterbodies

The groundwaters listed below intersect spatially with river and lake waterbodies in the subcatchment ...

Code	Name	Type	Local Authority	WFD Risk
IE_SE_G_009	Ballingarry	Groundwater	Kilkenny County Council	Review
IE_SE_G_040	Clonmel	Groundwater	Tipperary County Council	Review
IE_SE_G_081	Killenaule	Groundwater	Tipperary County Council	Not at risk
IE_SE_G_114	Rathdowney	Groundwater	Laois County Council	Review
IE_SE_G_119	Shanahoe	Groundwater	Laois County Council	Review
IE_SE_G_126	Slieveardagh Hills	Groundwater	Tipperary County Council	Review
IE_SE_G_131	Templemore	Groundwater	Tipperary County Council	Review
IE_SE_G_145	Tipperary	Groundwater	Tipperary County Council	Review
IE_SE_G_156	Durrow	Groundwater	Kilkenny County Council	At risk
IE_SE_G_158	Thurles	Groundwater	Tipperary County Council	Review

## Protected Areas intersecting River and Lake Waterbodies

The Protected Areas listed below intersect spatially with river and lake waterbodies in the subcatchment ...

Code	Name	Type	Waterbody Name	Association Type
IERI_SE_2001_001 9	Suir (River)	Nutrient Sensitive Area	SUIR_070	Overlapping / partly within Protected Area

## Pressures

Below is a list of all significant pressures identified in the subcatchment.

Code	Name	WFD Risk	Pressure Category	Pressure Sub Category
IE_SE_16B010100	BLACK (TWO MILE BORRIS)_010	At risk	Extractive Industry	Peat
IE_SE_16B030200	BREAGAGH (TIPPERARY)_010	At risk	Extractive Industry	Peat
IE_SE_16C040100	CLOVER_010	At risk	Industry	Section 4
IE_SE_16C040100	CLOVER_010	At risk	Forestry	Forestry
IE_SE_16D020040	DRISH_010	At risk	Forestry	Forestry
IE_SE_16D020068	DRISH_020	At risk	Extractive Industry	Peat - Harvesting
IE_SE_16D020068	DRISH_020	At risk	Forestry	Forestry
IE_SE_16D020068	DRISH_020	At risk	Agriculture	Agriculture
IE_SE_16D020070	DRISH_030	At risk	Extractive Industry	Peat
IE_SE_16D020100	DRISH_040	At risk	Extractive Industry	Peat
IE_SE_16D020100	DRISH_040	At risk	Extractive Industry	Mines
IE_SE_16D020200	DRISH_050	At risk	Urban Waste Water	Agglomeration PE of 500 to 1,000
IE_SE_16D020200	DRISH_050	At risk	Extractive Industry	Peat
IE_SE_16D020400	DRISH_060	At risk	Anthropogenic Pressures	Unknown
IE_SE_G_156	Durrow	At risk	Agriculture	Agriculture
IE_SE_16B030400	BREAGAGH (TIPPERARY)_020	Review	Anthropogenic Pressures	Unknown
IE_SE_16N280780	North Glengoole_010	Review	Anthropogenic Pressures	Unknown
IE_SE_G_009	Ballingarry	Review	Anthropogenic Pressures	Unknown
IE_SE_G_040	Clonmel	Review	Anthropogenic Pressures	Unknown
IE_SE_G_114	Rathdowney	Review	Anthropogenic Pressures	Unknown
IE_SE_G_119	Shanahoe	Review	Anthropogenic Pressures	Unknown
IE_SE_G_126	Slieveardagh Hills	Review	Anthropogenic Pressures	Unknown
IE_SE_G_131	Templemore	Review	Anthropogenic Pressures	Unknown
IE_SE_G_145	Tipperary	Review	Anthropogenic Pressures	Unknown
IE_SE_G_158	Thurles	Review	Anthropogenic Pressures	Unknown

## Further Characterisation Actions

The following further characterisation actions have been identified. These are necessary to help understand more fully issues in the subcatchment and their likely cause.

Code	Name	Action	Responsible Organisation
IE_SE_16N280780	North Glengoole_010	IA3 Determination of Water Quality (unassigned waterbody)	Tipperary County Council
IE_SE_16C040100	CLOVER_010	IA4 Regulated Point Sources	Tipperary County Council
IE_SE_16B010100	BLACK (TWO MILE BORRIS)_010	IA7 Multiple Sources in Multiple Areas	Tipperary County Council
IE_SE_16D020100	DRISH_040	IA1 Provision of Information	Kilkenny County Council
IE_SE_16D020040	DRISH_010	IA7 Multiple Sources in Multiple Areas	Tipperary County Council
IE_SE_16D020070	DRISH_030	IA1 Provision of Information	Kilkenny County Council
IE_SE_16B030400	BREAGAGH (TIPPERARY)_020	IA3 Determination of Water Quality (unassigned waterbody)	Tipperary County Council
IE_SE_16D020068	DRISH_020	IA1 Provision of Information	Kilkenny County Council
IE_SE_16D020200	DRISH_050	IA4 Regulated Point Sources	Tipperary County Council
IE_SE_16D020400	DRISH_060	IA5 Multiple Sources in defined rural area (1km) or waterbody or rural town	Tipperary County Council
IE_SE_16B030200	BREAGAGH (TIPPERARY)_010	IA7 Multiple Sources in Multiple Areas	Tipperary County Council