

WFD Cycle 2

Catchment Lower Shannon

Subcatchment Nenagh_SC_020

Code 25C_11



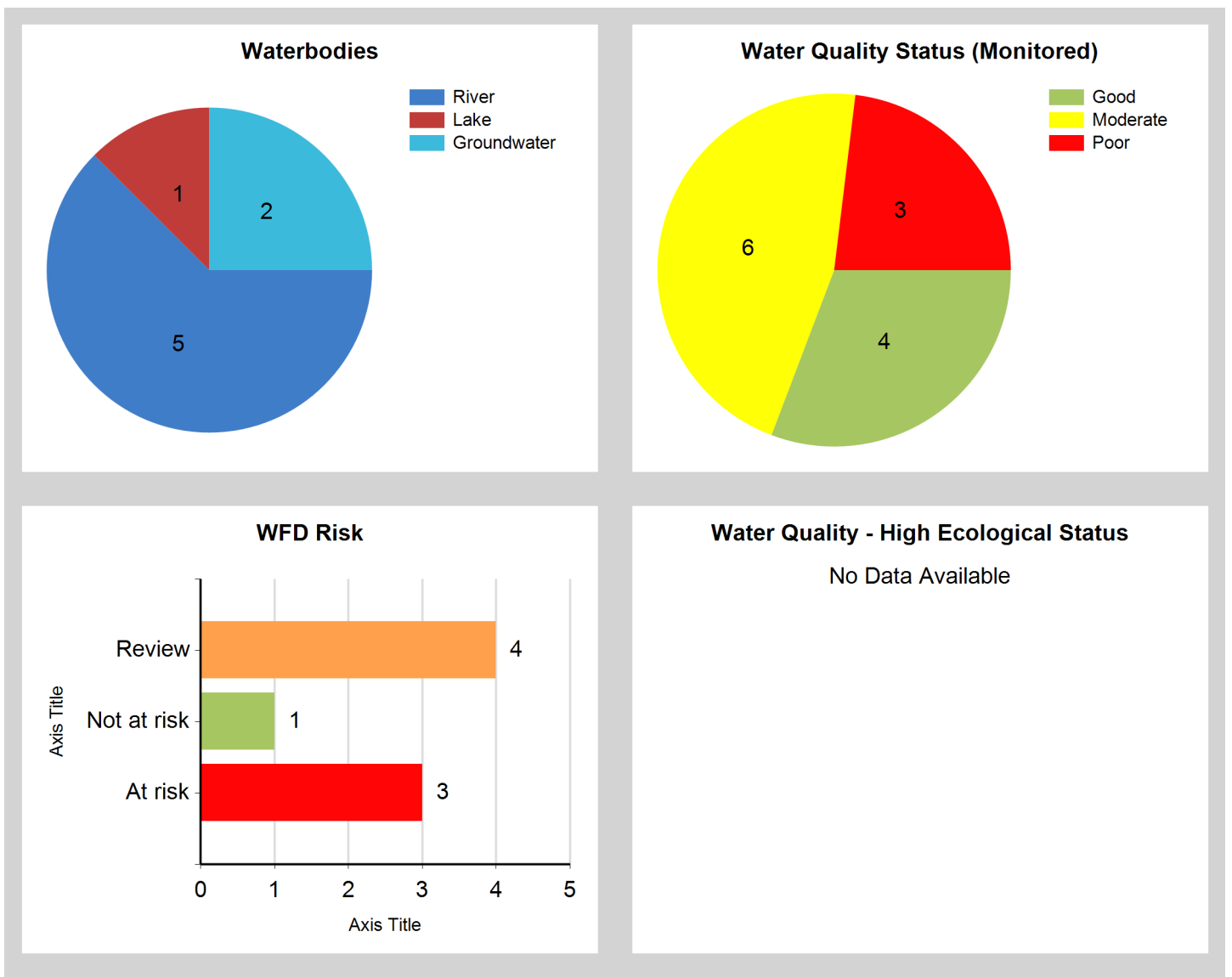
© Ordnance Survey Ireland. All rights reserved. Licence Number EN 0059208

Generated on: 10 Dec 2018

Assessment Purpose

This assessment has been produced as part of the national characterisation programme undertaken for the second cycle of Water Framework Directive river basin management planning. It has been led by the EPA, with input from Local Authorities and other public bodies, and with support from RPS consultants.

The characterisation assessments are automatically generated from the information stored in the WFD Application. They are based on information available to the end of 2015 but may be subject to change until the final 2018-21 river basin management plan is published. Users should ensure that they have the most up to date information by downloading the latest assessment before use.



Evaluation of Priority Subcatchment Issues

The main pathway here is overland flow for phosphate (gley soils and peaty areas along the channels) and this is a potential issue for the area of the lower Nenagh main channel prior to discharge to Lough Derg, which itself consists of a large area of alluvium (an area which tends to flood). Overland flow would also be the dominant pathway for phosphate to surface water around the Gortadalaun and the Clonmakilladuff.

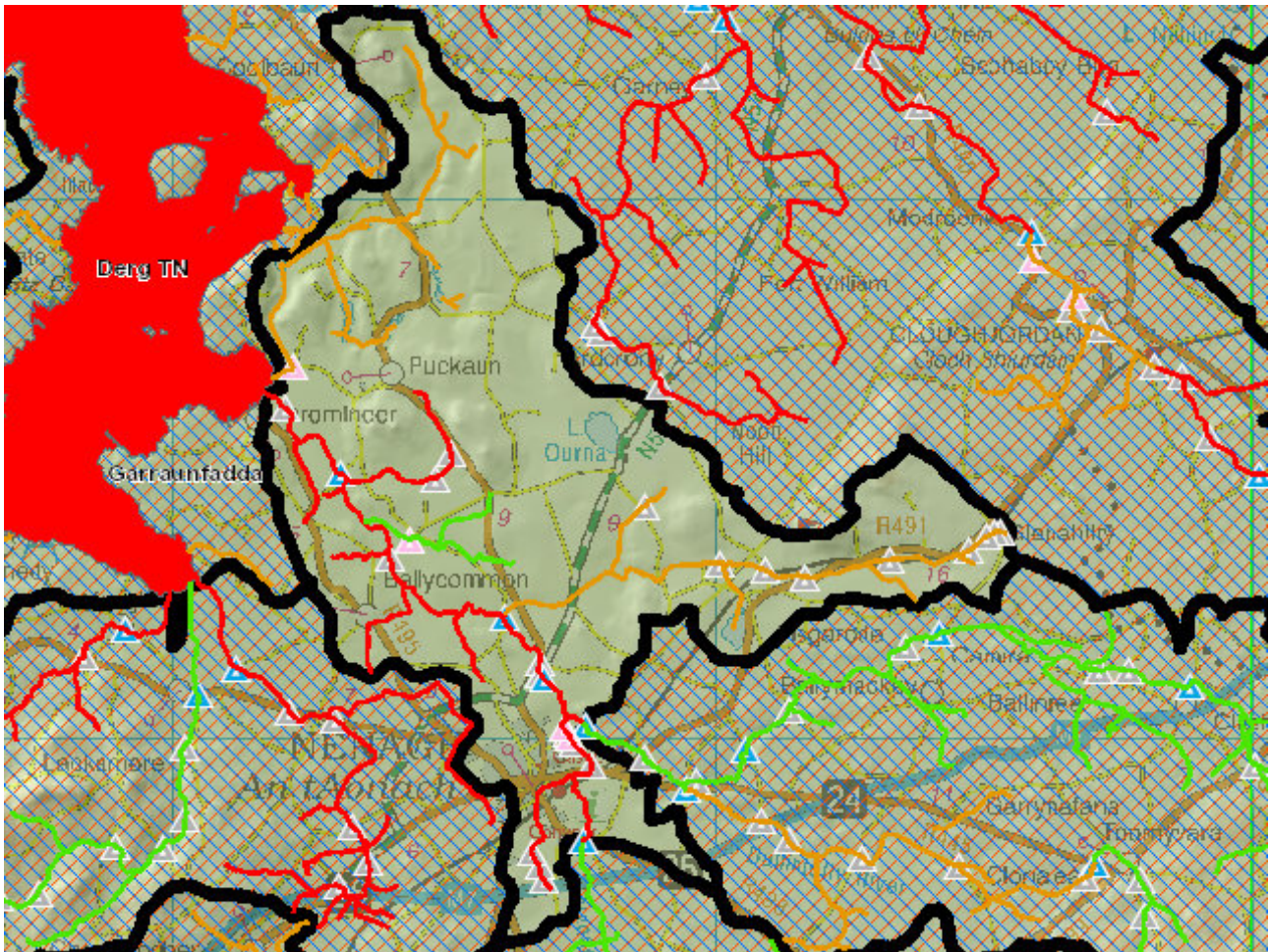
Biology is only available for the two sub-basins of the Nenagh River (Nenagh_060 and _070) both of which maintained Moderate ecological status into the 2013-15 monitoring cycle. The Clareen Stream, which is a tributary to the Nenagh river in the Nenagh_060 sub-basin, is above the ecological quality standard for Good status for phosphate and total ammonia and also has very elevated total oxidised nitrogen and biological oxygen demand levels. The possible significant pressure here is from nutrient enrichment and organic pollution from industry which discharges to the main flow in the Clareen Stream.

The main issue impacting the Nenagh_070 is related to hydromorphology (bank erosion and steep slopes) rather than nutrients issue.

Diffuse loss of nutrients from agriculture are considered the main issues which could be impacting both the Gortadalaun and Clonmakilladuff streams; as there is no biological or chemistry data for either of these, investigative assessment should help clarify whether there are significant impacts.

The Nenagh tributary linking into the Nenagh_070 has no known issues or impacts.

Map Subcatchment Risk Map

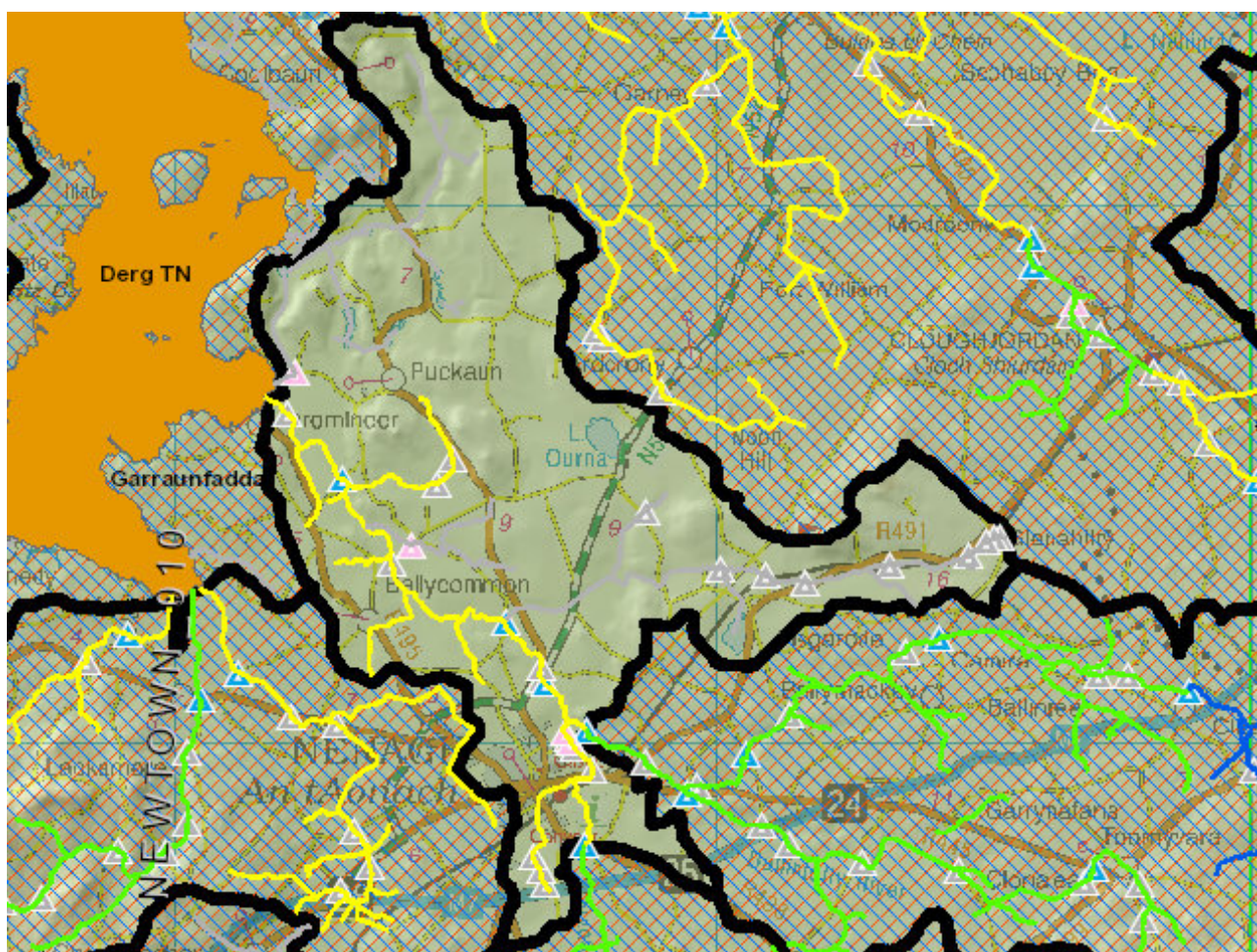


River And Lake Waterbodies: WFD Risk

The following river and lake waterbodies are in the subcatchment.

Code	Name	Type	WFD Risk	Significant Pressure
IE_SH_25_191a	Derg TN	Lake	At risk	Yes
IE_SH_25N010700	NENAGH_060	River	At risk	Yes
IE_SH_25N010800	NENAGH_070	River	At risk	Yes
IE_SH_25C970950	CLONMAKILLADUFF_010	River	Review	Yes
IE_SH_25G200100	GORTADALAUN STREAM_010	River	Review	Yes

Map Subcatchment Water Quality Status Map



River And Lake Waterbodies: Water Quality Status

The water quality status of river and lake waterbodies in the subcatchment is as follows.

Code	Name	Type	2007-09	2010-12	2010-15
IE_SH_25C970950	CLONMAKILLADUFF_010	River	Unassigned	Unassigned	Unassigned
IE_SH_25_191a	Derg TN	Lake	Poor	Poor	Poor
IE_SH_25G200100	GORTADALAUN STREAM_010	River	Unassigned	Unassigned	Unassigned
IE_SH_25N120710	NENAGH TRIBUTARY_010	River	Unassigned	Unassigned	Unassigned
IE_SH_25N010700	NENAGH_060	River	Moderate	Moderate	Moderate
IE_SH_25N010800	NENAGH_070	River	Moderate	Moderate	Moderate

Potentially Dependent Transitional and Coastal Waterbodies

The Transitional and Coastal waterbodies listed below intersect spatially with river and lake waterbodies in the subcatchment ...

Code	Name	Type	Local Authority	WFD Risk
------	------	------	-----------------	----------

Potentially Dependent Groundwater Waterbodies

The groundwaters listed below intersect spatially with river and lake waterbodies in the subcatchment ...

Code	Name	Type	Local Authority	WFD Risk
IE_SH_G_147	Lismaline	Groundwater	Tipperary County Council	Review
IE_SH_G_178	Nenagh	Groundwater	Tipperary County Council	Review

Protected Areas intersecting River and Lake Waterbodies

The Protected Areas listed below intersect spatially with river and lake waterbodies in the subcatchment ...

Code	Name	Type	Waterbody Name	Association Type
IE0002165	Lower River Shannon SAC	SAC	Derg TN	Overlapping / partly within Protected Area
IELK_SH_1994_0007	Lough Derg on the River Shannon	Nutrient Sensitive Area	Derg TN	Overlapping / partly within Protected Area
IEPA1_SH_25_191a	Derg TN	Drinking Water	Derg TN	Within Protected Area
IERI_SH_1994_0005	Nenagh (River)	Nutrient Sensitive Area	NENAGH_060	Overlapping / partly within Protected Area
IERI_SH_1994_0005	Nenagh (River)	Nutrient Sensitive Area	NENAGH_070	Overlapping / partly within Protected Area
IESHBWL25_191a_0100	Bathing Place at Portumna	Bathing Water	Derg TN	Overlapping / partly within Protected Area
IESHBWL25_191a_0200	Mountshannon, Lough Derg	Bathing Water	Derg TN	Overlapping / partly within Protected Area
IESHBWL25_191a_0300	Ballycuggeran	Bathing Water	Derg TN	Overlapping / partly within Protected Area

Pressures

Below is a list of all significant pressures identified in the subcatchment.

Code	Name	WFD Risk	Pressure Category	Pressure Sub Category
IE_SH_25_191a	Derg TN	At risk	Hydromorphology	Dams, barriers, locks, weirs
IE_SH_25_191a	Derg TN	At risk	Urban Waste Water	Agglomeration PE of 2,001 to 10,000
IE_SH_25_191a	Derg TN	At risk	Invasive Species	Invasive species
IE_SH_25_191a	Derg TN	At risk	Agriculture	Pasture
IE_SH_25N010700	NENAGH_060	At risk	Industry	IE
IE_SH_25N010800	NENAGH_070	At risk	Hydromorphology	Channelisation
IE_SH_25C970950	CLONMAKILLADUFF_010	Review	Agriculture	Pasture
IE_SH_25C970950	CLONMAKILLADUFF_010	Review	Agriculture	Arable
IE_SH_25G200100	GORTADALAUN STREAM_010	Review	Agriculture	Agriculture
IE_SH_25G200100	GORTADALAUN STREAM_010	Review	Agriculture	Arable
IE_SH_25G200100	GORTADALAUN STREAM_010	Review	Agriculture	Pasture
IE_SH_G_147	Lismaline	Review	Anthropogenic Pressures	Unknown
IE_SH_G_178	Nenagh	Review	Anthropogenic Pressures	Unknown

Further Characterisation Actions

The following further characterisation actions have been identified. These are necessary to help understand more fully issues in the subcatchment and their likely cause.

Code	Name	Action	Responsible Organisation
IE_SH_25C970950	CLONMAKILLADUFF_010	IA3 Determination of Water Quality (unassigned waterbody)	Tipperary County Council
IE_SH_25N010700	NENAGH_060	IA1 Provision of Information	Environmental Protection Agency
IE_SH_25G200100	GORTADALAUN STREAM_010	IA3 Determination of Water Quality (unassigned waterbody)	Tipperary County Council
IE_SH_25N010800	NENAGH_070	IA1 Provision of Information	Office of Public Works