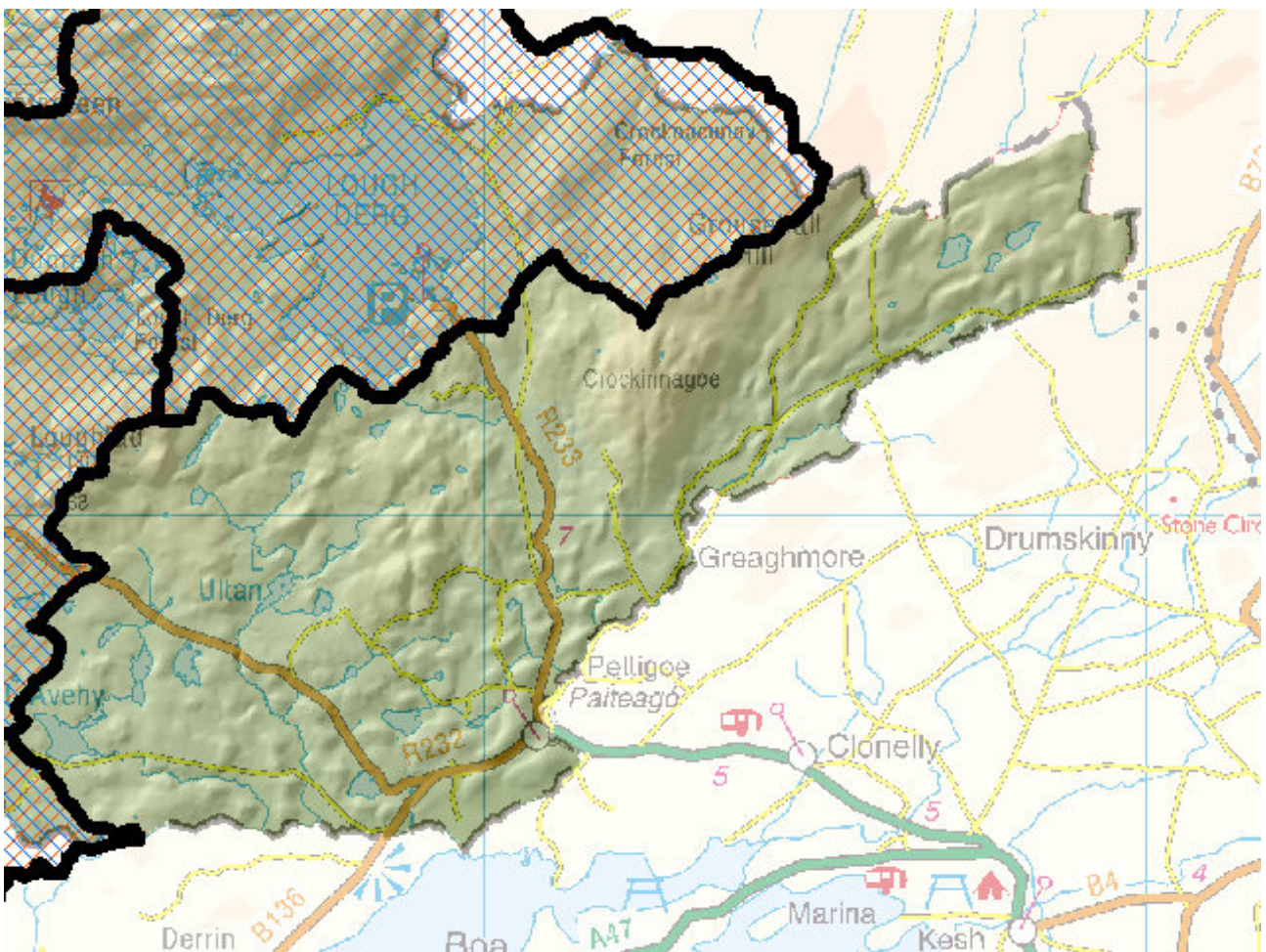


WFD Cycle 2

Catchment Erne

Subcatchment BILLARY_SC_010

Code 36_25



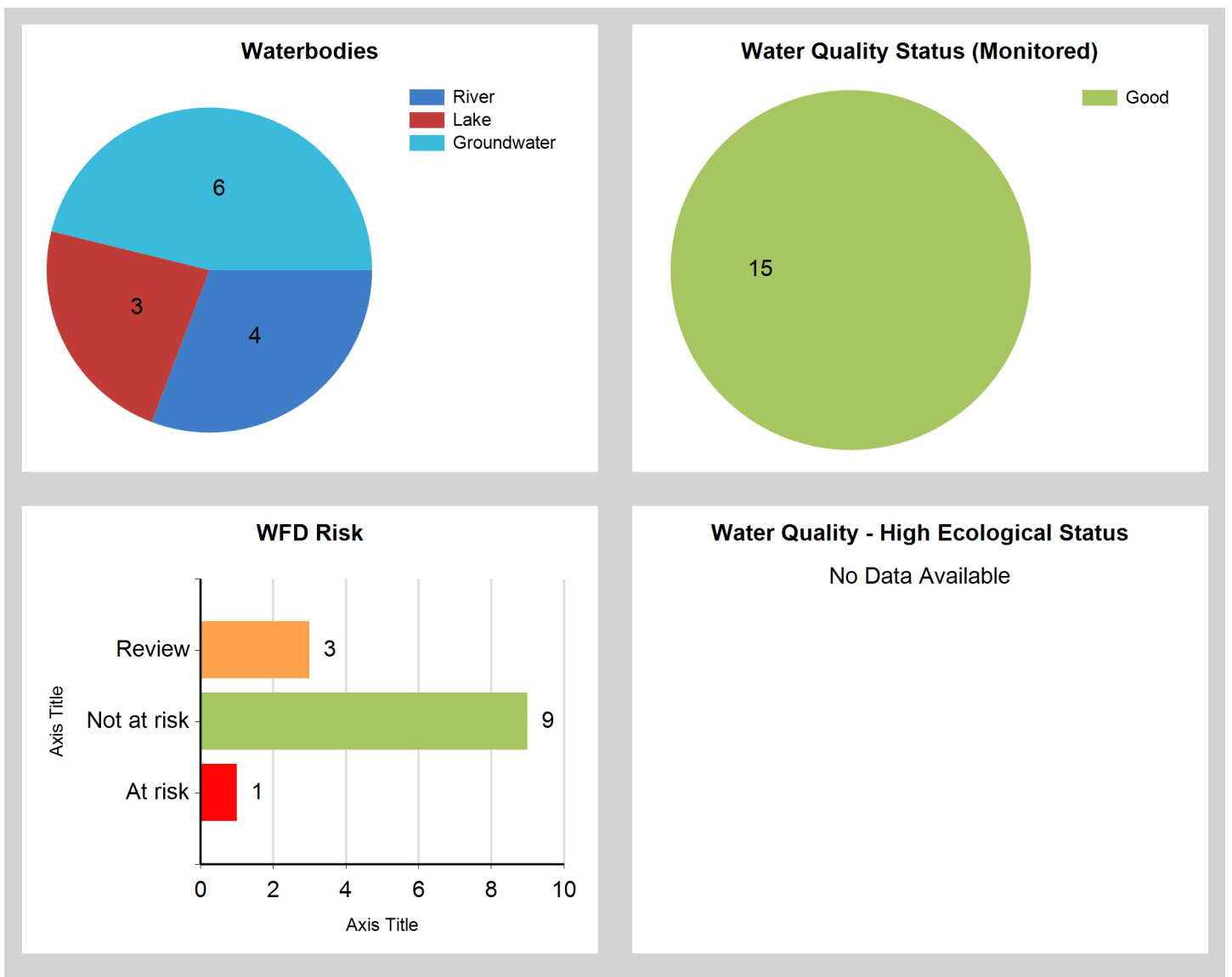
© Ordnance Survey Ireland. All rights reserved. Licence Number EN 0059208

Generated on: 16 Jan 2019

Assessment Purpose

This assessment has been produced as part of the national characterisation programme undertaken for the second cycle of Water Framework Directive river basin management planning. It has been led by the EPA, with input from Local Authorities and other public bodies, and with support from RPS consultants.

The characterisation assessments are automatically generated from the information stored in the WFD Application. They are based on information available to the end of 2015 but may be subject to change until the final 2018-21 river basin management plan is published. Users should ensure that they have the most up to date information by downloading the latest assessment before use.

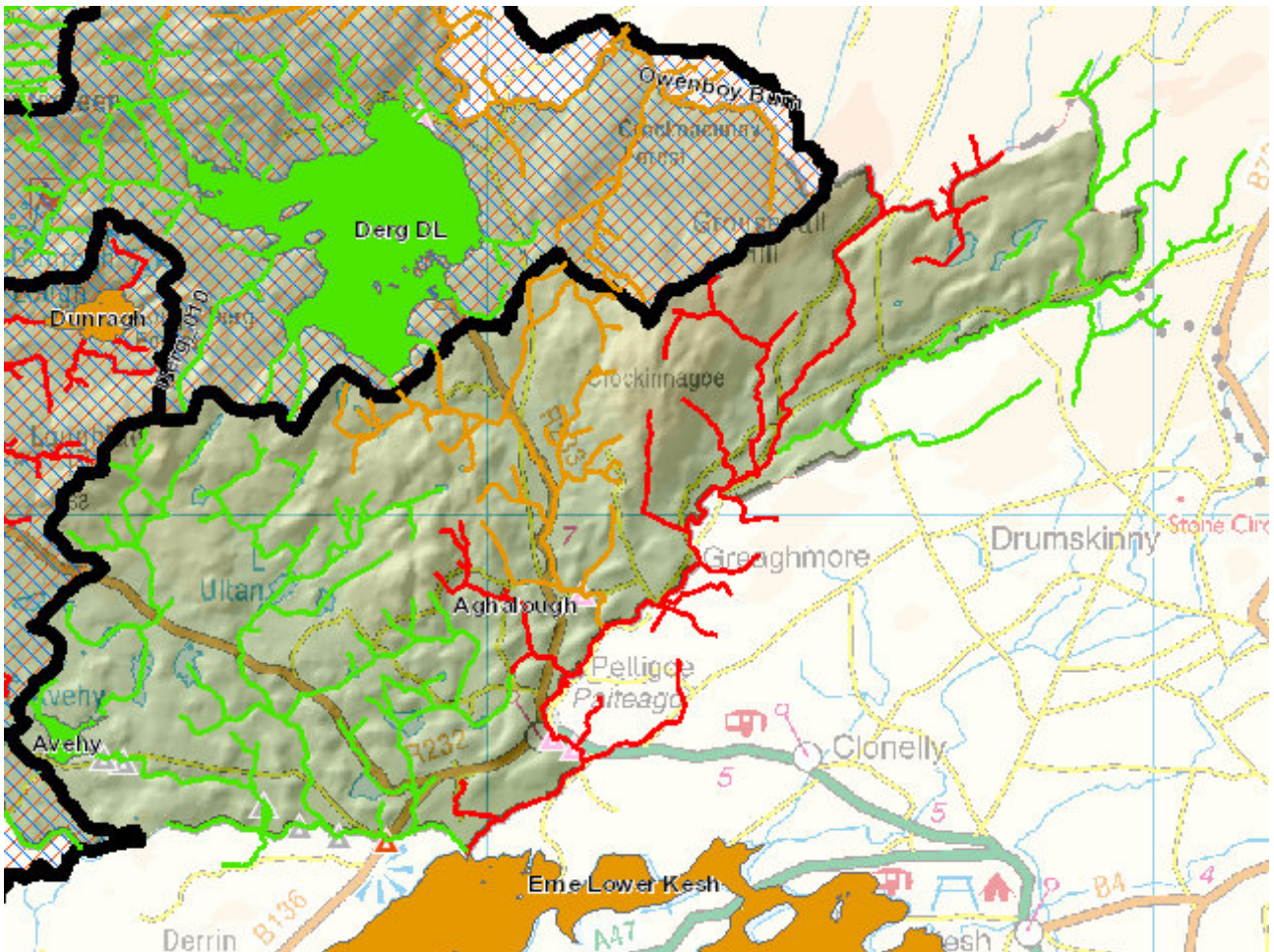


Evaluation of Priority Subcatchment Issues

Peat dominates the upper reaches of the sub-catchment and surrounding areas. However based on the data that is available for one river, this does not appear to be having a negative impact. With the exception of a single CoA, there are no point pressures in this sub-catchment, however the data does not cover areas that fall within Northern Ireland. Potential diffuse pressures include agriculture, forestry and peat. The two lakes within the subcatchment, should be put under review by the EPA Lakes monitoring team for safety and 'fit for purpose' requirement under the monitoring programme. One lake had the abstraction supply removed due to water quality issues

There is a large farm within the subcatchment on the Temon River which has been issued with a Section 12 by Donegal CoCo in the past and is often under close observation with both point source discharge and diffuse risks. The main issues are with pathways and drainage/quick pathways through improved land.

Map Subcatchment Risk Map

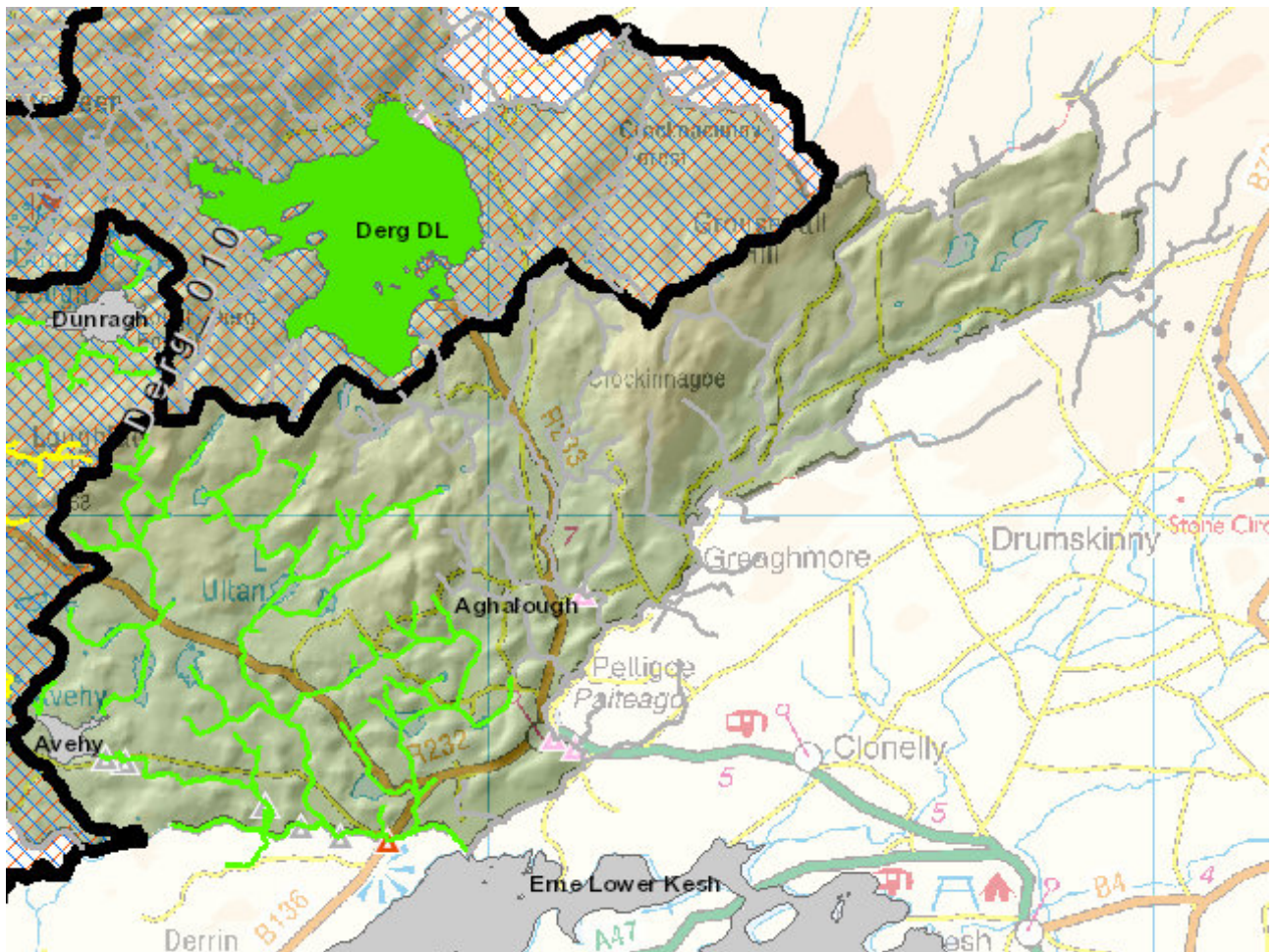


River And Lake Waterbodies: WFD Risk

The following river and lake waterbodies are in the subcatchment.

Code	Name	Type	WFD Risk	Significant Pressure
UKGBNI1NW363604064	Termon River (Pettigoe)	River	At risk	Yes
IE_NW_36S530890	SESSIAGHKEELTA_010	River	Review	Yes

Map Subcatchment Water Quality Status Map



River And Lake Waterbodies: Water Quality Status

The water quality status of river and lake waterbodies in the subcatchment is as follows.

Code	Name	Type	2007-09	2010-12	2010-15
IE_NW_36_142	Aghalough	Lake	Unassigned	Unassigned	Unassigned
IE_NW_36_423	Avehy	Lake	Unassigned	Unassigned	Unassigned
UKGBNI3NW0006	Erne Lower Kesh	Lake	Unassigned	Unassigned	Unassigned
IE_NW_36S530890	SESSIAGHKEELTA_010	River	Unassigned	Unassigned	Unassigned
UKGBNI1NW36360 4064	Termon River (Pettigoe)	River	Unassigned	Unassigned	Unassigned
UKGBNI1NW36360 2088	Termon River (Tullynamaltra)	River	Unassigned	Unassigned	Unassigned
UKGBNI1NW36360 4078	WATERFOOT_010	River	Good	Good	Good

Potentially Dependent Transitional and Coastal Waterbodies

The Transitional and Coastal waterbodies listed below intersect spatially with river and lake waterbodies in the subcatchment ...

Code	Name	Type	Local Authority	WFD Risk
------	------	------	-----------------	----------

Potentially Dependent Groundwater Waterbodies

The groundwaters listed below intersect spatially with river and lake waterbodies in the subcatchment ...

Code	Name	Type	Local Authority	WFD Risk
GBNI4NW008	Ederney	Groundwater	Donegal County Council	Not at risk
IE_NW_G_047	Donegal South	Groundwater	Donegal County Council	Not at risk
IEGBNI_NW_G_00 5	Castledearg	Groundwater	Donegal County Council	Not at risk
IEGBNI_NW_G_00 9	Pettigo	Groundwater	Donegal County Council	Not at risk
IEGBNI_NW_G_01 0	Crilly	Groundwater	Donegal County Council	Not at risk
IEGBNI_NW_G_01 1	Ballyshannon East	Groundwater	Donegal County Council	Not at risk

Protected Areas intersecting River and Lake Waterbodies

The Protected Areas listed below intersect spatially with river and lake waterbodies in the subcatchment ...

Code	Name	Type	Waterbody Name	Association Type
------	------	------	----------------	------------------

Pressures

Below is a list of all significant pressures identified in the subcatchment.

Code	Name	WFD Risk	Pressure Category	Pressure Sub Category
UKGBNI1NW363604064	Termon River (Pettigoe)	At risk	Urban Waste Water	Agglomeration PE < 500
UKGBNI1NW363604064	Termon River (Pettigoe)	At risk	Agriculture	Agriculture
IE_NW_36S530890	SESSIAGHKEELTA_010	Review	Agriculture	Agriculture
IE_NW_36S530890	SESSIAGHKEELTA_010	Review	Forestry	Forestry

Further Characterisation Actions

The following further characterisation actions have been identified. These are necessary to help understand more fully issues in the subcatchment and their likely cause.

Code	Name	Action	Responsible Organisation
IE_NW_36_142	Aghalough	IA1 Provision of Information	Environmental Protection Agency
UKGBNI1NW363604064	Termon River (Pettigoe)	IA5 Multiple Sources in defined rural area (1km) or waterbody or rural town	Donegal County Council
UKGBNI1NW363604064	Termon River (Pettigoe)	IA1 Provision of Information	Irish Water
UKGBNI3NW0006	Erne Lower Kesh	IA1 Provision of Information	Northern Ireland Environment Agency
IE_NW_36S530890	SESSIAGHKEELTA_010	IA3 Determination of Water Quality (unassigned waterbody)	Donegal County Council