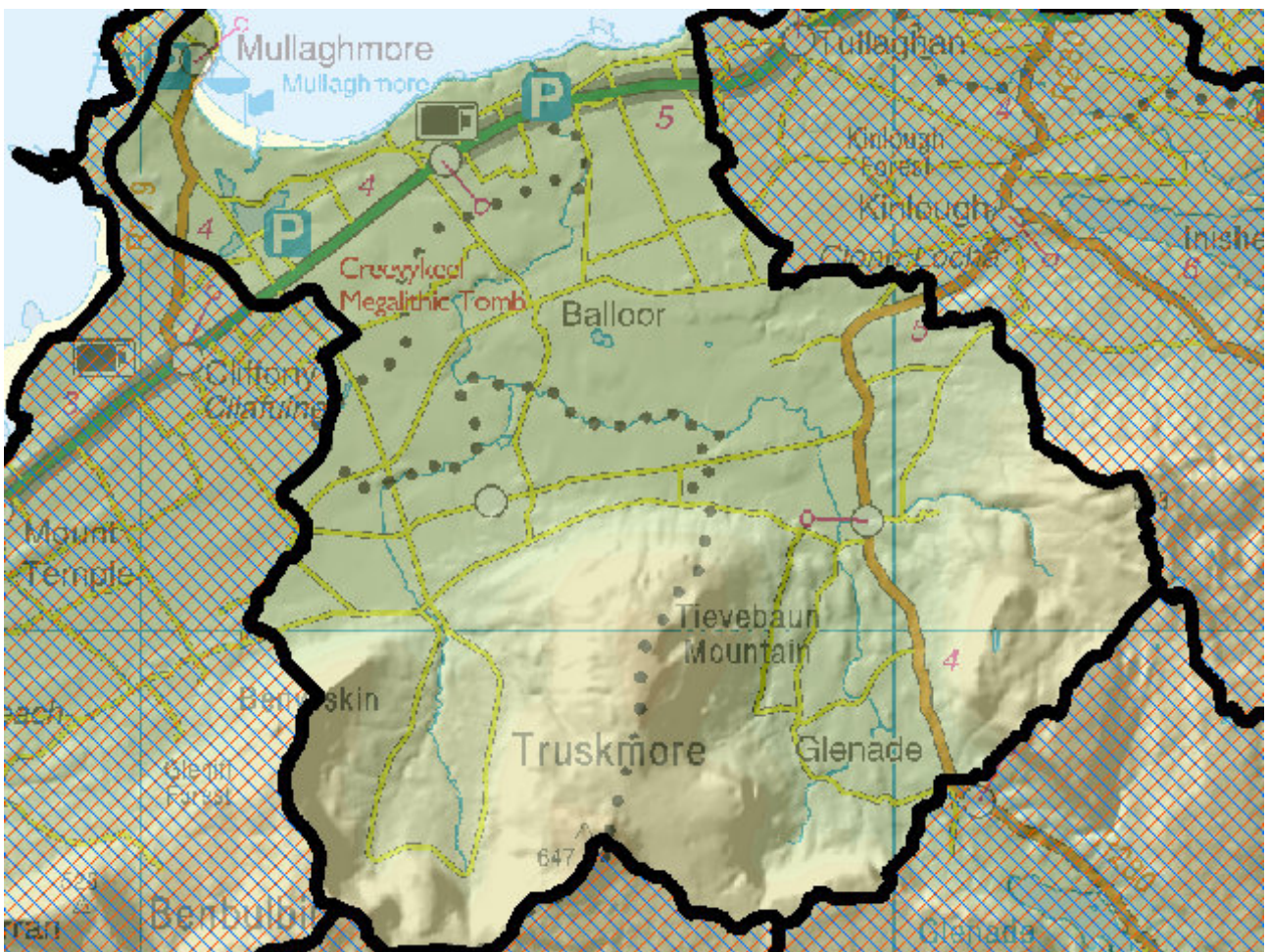


WFD Cycle 2

Catchment Erne

Subcatchment Duff_SC_010

Code 36_28



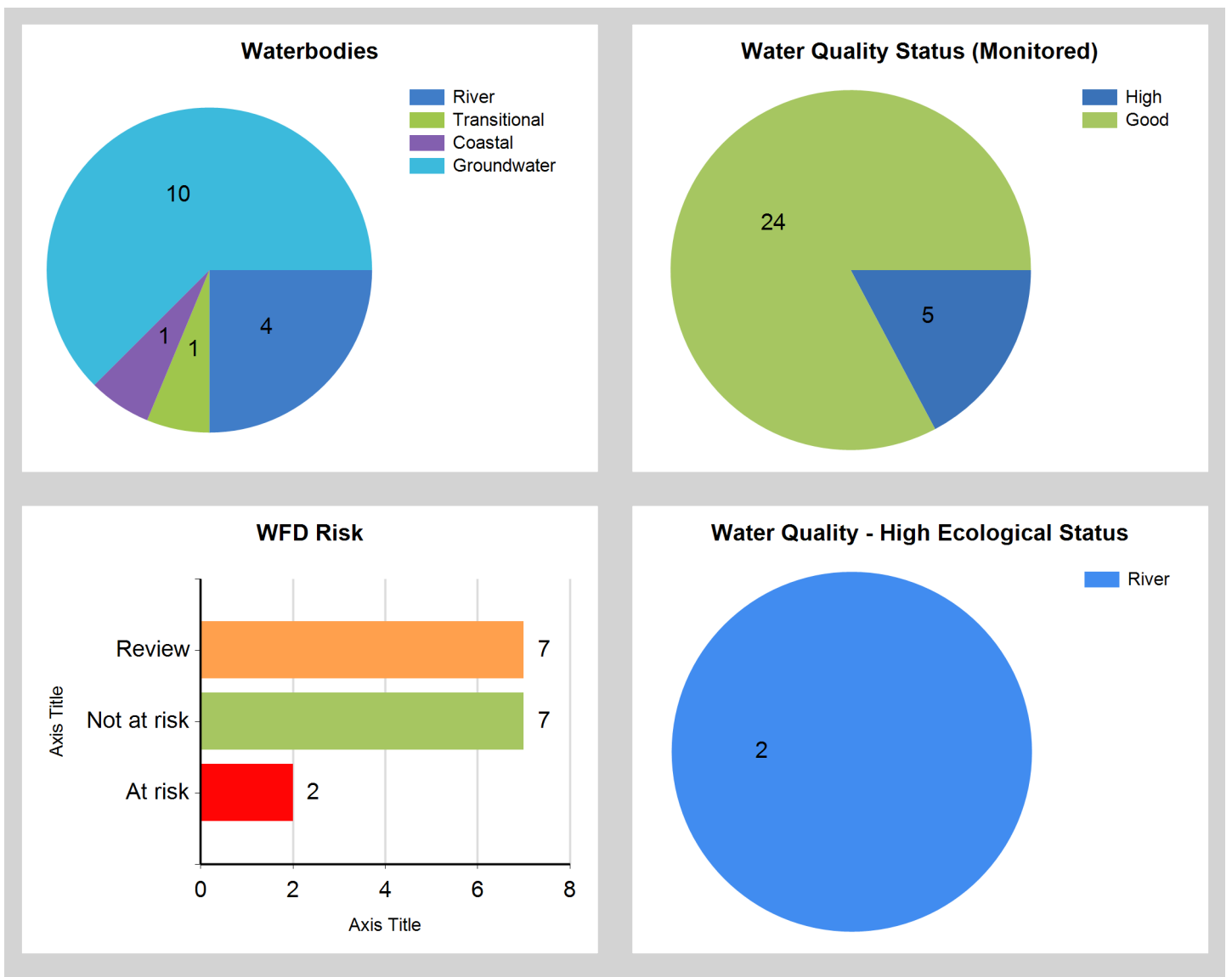
© Ordnance Survey Ireland. All rights reserved. Licence Number EN 0059208

Generated on: 16 Jan 2019

Assessment Purpose

This assessment has been produced as part of the national characterisation programme undertaken for the second cycle of Water Framework Directive river basin management planning. It has been led by the EPA, with input from Local Authorities and other public bodies, and with support from RPS consultants.

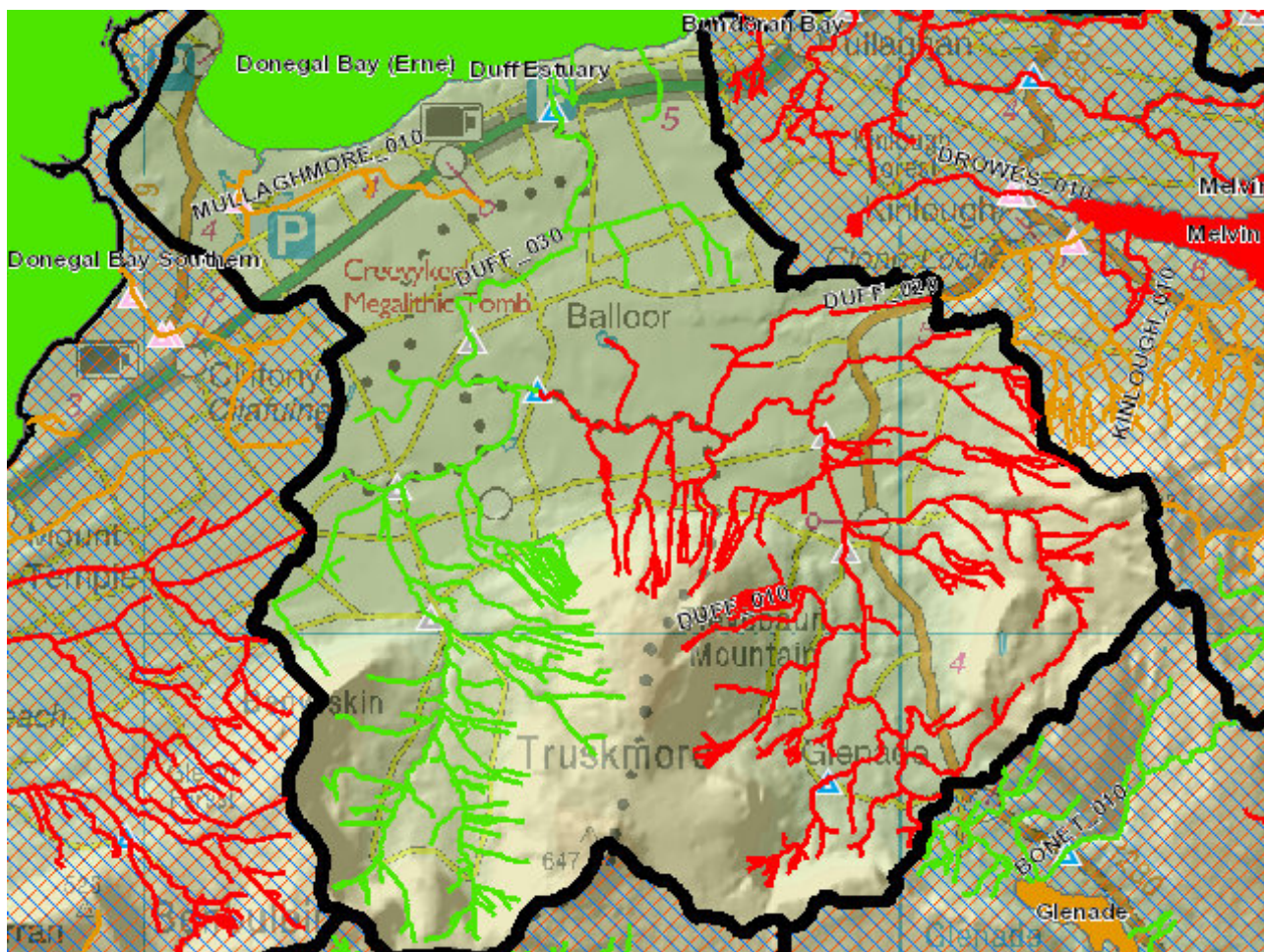
The characterisation assessments are automatically generated from the information stored in the WFD Application. They are based on information available to the end of 2015 but may be subject to change until the final 2018-21 river basin management plan is published. Users should ensure that they have the most up to date information by downloading the latest assessment before use.



Evaluation of Priority Subcatchment Issues

There are four river waterbodies in this subbasin, the river Duff (Duff_010, _020 and _030) and Mullaghmore 35_050. Two of these waterbodies Duff_010 and Duff_020 are High Ecological Objective Status Sites. Duff_010 and Duff_020 are At Risk because biological status declined from High to Good. Within the sub-basins, agriculture is the main land use and there are large areas of peaty soils. Forestry activities with recent felling reported may also be a significant pressure. Further characterisation is needed to determine what has caused the deterioration in high status. Mullaghmore 35_010 was revised from Unassigned to Review due to the presence of potential pressures in the within the waterbody, mainly septic tanks and agriculture. Duff_030 is Not at Risk because ecological status improved from Good to High in 2013-2015 cycle.

Map Subcatchment Risk Map

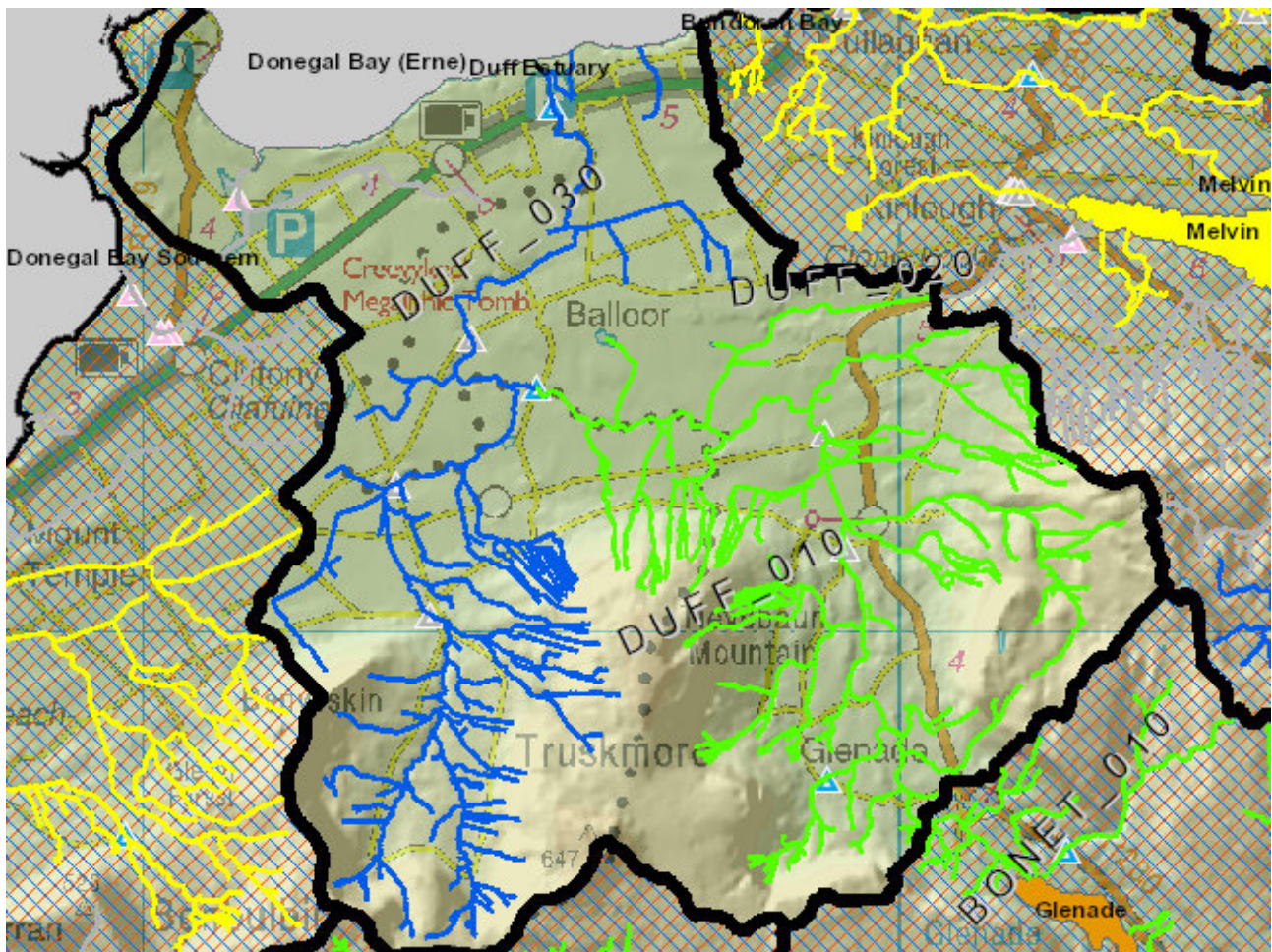


River And Lake Waterbodies: WFD Risk

The following river and lake waterbodies are in the subcatchment.

Code	Name	Type	WFD Risk	Significant Pressure
IE_NW_35D050100	DUFF_010	River	At risk	Yes
IE_NW_35D050250	DUFF_020	River	At risk	Yes
IE_WE_35M540870	MULLAGHMORE_010	River	Review	Yes

Map Subcatchment Water Quality Status Map



River And Lake Waterbodies: Water Quality Status

The water quality status of river and lake waterbodies in the subcatchment is as follows.

Code	Name	Type	2007-09	2010-12	2010-15
IE_NW_35D050100	DUFF_010	River	High	High	Good
IE_NW_35D050250	DUFF_020	River	High	High	Good
IE_NW_35D050400	DUFF_030	River	Good	Good	High
IE_WE_35M540870	MULLAGHMORE_010	River	Unassigned	Unassigned	Unassigned

Potentially Dependent Transitional and Coastal Waterbodies

The Transitional and Coastal waterbodies listed below intersect spatially with river and lake waterbodies in the subcatchment ...

Code	Name	Type	Local Authority	WFD Risk
IE_NW_010_0000	Donegal Bay (Erne)	Coastal	Donegal County Council	Not at risk
IE_NW_010_0100	Duff Estuary	Transitional	Leitrim County Council	Not at risk

Potentially Dependent Groundwater Waterbodies

The groundwaters listed below intersect spatially with river and lake waterbodies in the subcatchment ...

Code	Name	Type	Local Authority	WFD Risk
IE_NW_G_043	Glenaniff	Groundwater	Leitrim County Council	Review
IE_NW_G_045	Largydonnell	Groundwater	Leitrim County Council	Not at risk
IE_NW_G_046	Ballaghnatrillick	Groundwater	Leitrim County Council	Not at risk
IE_NW_G_073	Tievebaun	Groundwater	Leitrim County Council	Review
IE_WE_G_0044	Drumcliff-Strandhill	Groundwater	Sligo County Council	Review
IE_WE_G_0059	Glenade	Groundwater	Leitrim County Council	Review
IE_WE_G_0060	Glencar	Groundwater	Leitrim County Council	Review
IE_WE_G_0062	Grange East	Groundwater	Sligo County Council	Not at risk
IEGBNI_NW_G_01 4	Tullaghan-Lough Melvin	Groundwater	Leitrim County Council	Not at risk
IEGBNI_NW_G_04 4	Rossinver	Groundwater	Leitrim County Council	Review

Protected Areas intersecting River and Lake Waterbodies

The Protected Areas listed below intersect spatially with river and lake waterbodies in the subcatchment ...

Code	Name	Type	Waterbody Name	Association Type
IE0000625	Bunduff Lough And Machair/Trawalua/Mullaghmore SAC	SAC	MULLAGHMORE_010	Overlapping / partly within Protected Area

Pressures

Below is a list of all significant pressures identified in the subcatchment.

Code	Name	WFD Risk	Pressure Category	Pressure Sub Category
IE_NW_35D050100	DUFF_010	At risk	Agriculture	Pasture
IE_NW_35D050250	DUFF_020	At risk	Agriculture	Pasture
IE_NW_35D050250	DUFF_020	At risk	Extractive Industry	Peat
IE_NW_G_043	Glenaniff	Review	Anthropogenic Pressures	Unknown
IE_NW_G_073	Tievebaun	Review	Anthropogenic Pressures	Unknown
IE_WE_35M540870	MULLAGHMORE_010	Review	Agriculture	Pasture
IE_WE_35M540870	MULLAGHMORE_010	Review	Domestic Waste Water	Waste Water discharge
IE_WE_35M540870	MULLAGHMORE_010	Review	Forestry	Forestry
IE_WE_G_0044	Drumcliff-Strandhill	Review	Anthropogenic Pressures	Unknown
IE_WE_G_0059	Glenade	Review	Anthropogenic Pressures	Unknown
IE_WE_G_0060	Glencar	Review	Anthropogenic Pressures	Unknown
IEGBNI_NW_G_044	Rossinver	Review	Anthropogenic Pressures	Unknown

Further Characterisation Actions

The following further characterisation actions have been identified. These are necessary to help understand more fully issues in the subcatchment and their likely cause.

Code	Name	Action	Responsible Organisation
IE_NW_35D050100	DUFF_010	IA8 High status RWB pressures	Leitrim County Council
IE_NW_35D050250	DUFF_020	IA8 High status RWB pressures	Leitrim County Council
IE_WE_35M540870	MULLAGHMORE_010	IA3 Determination of Water Quality (unassigned waterbody)	Sligo County Council