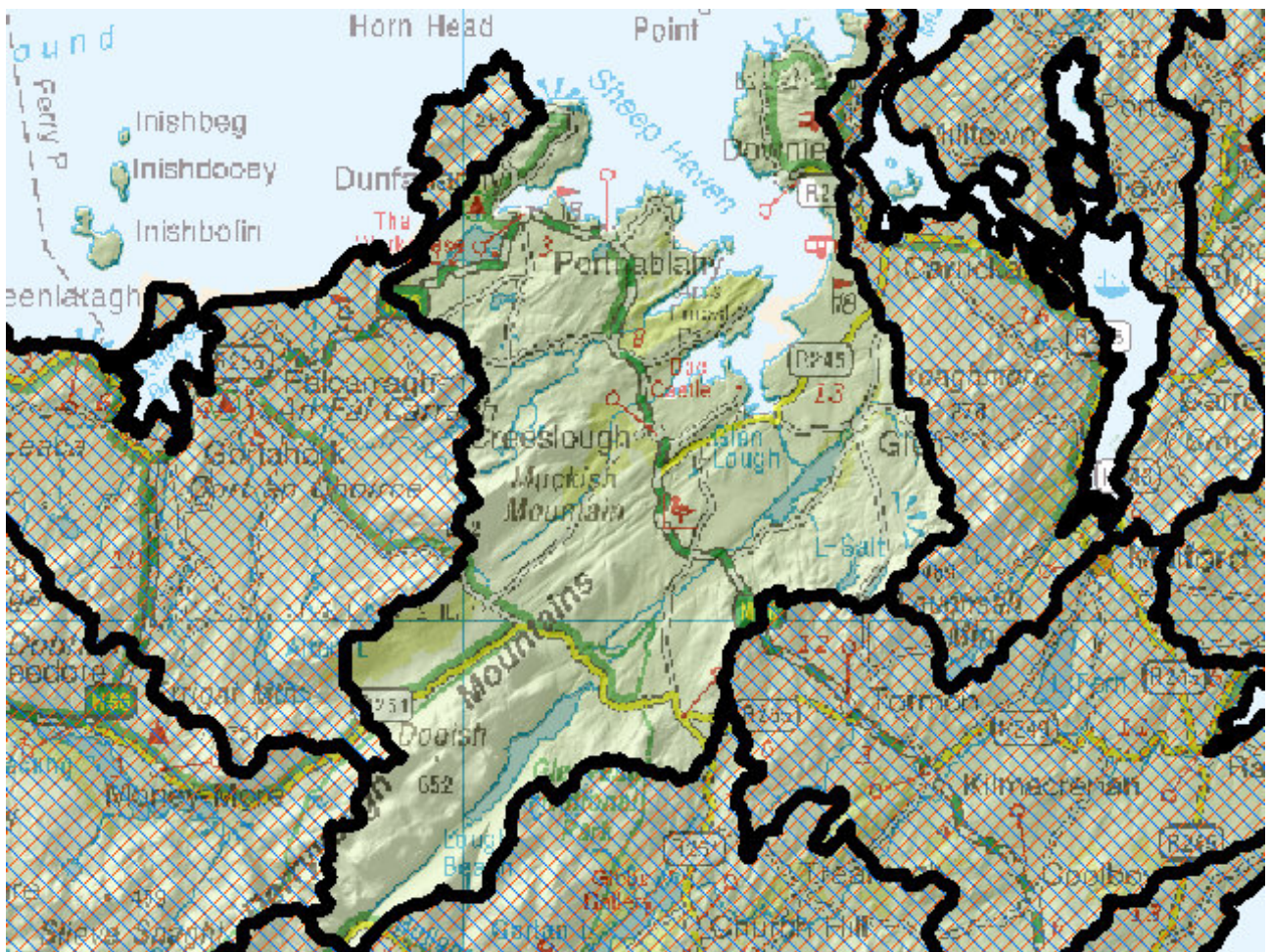


WFD Cycle 2

Catchment Gweebarra-Sheephaven

Subcatchment Lackagh_SC_010

Code 38_5



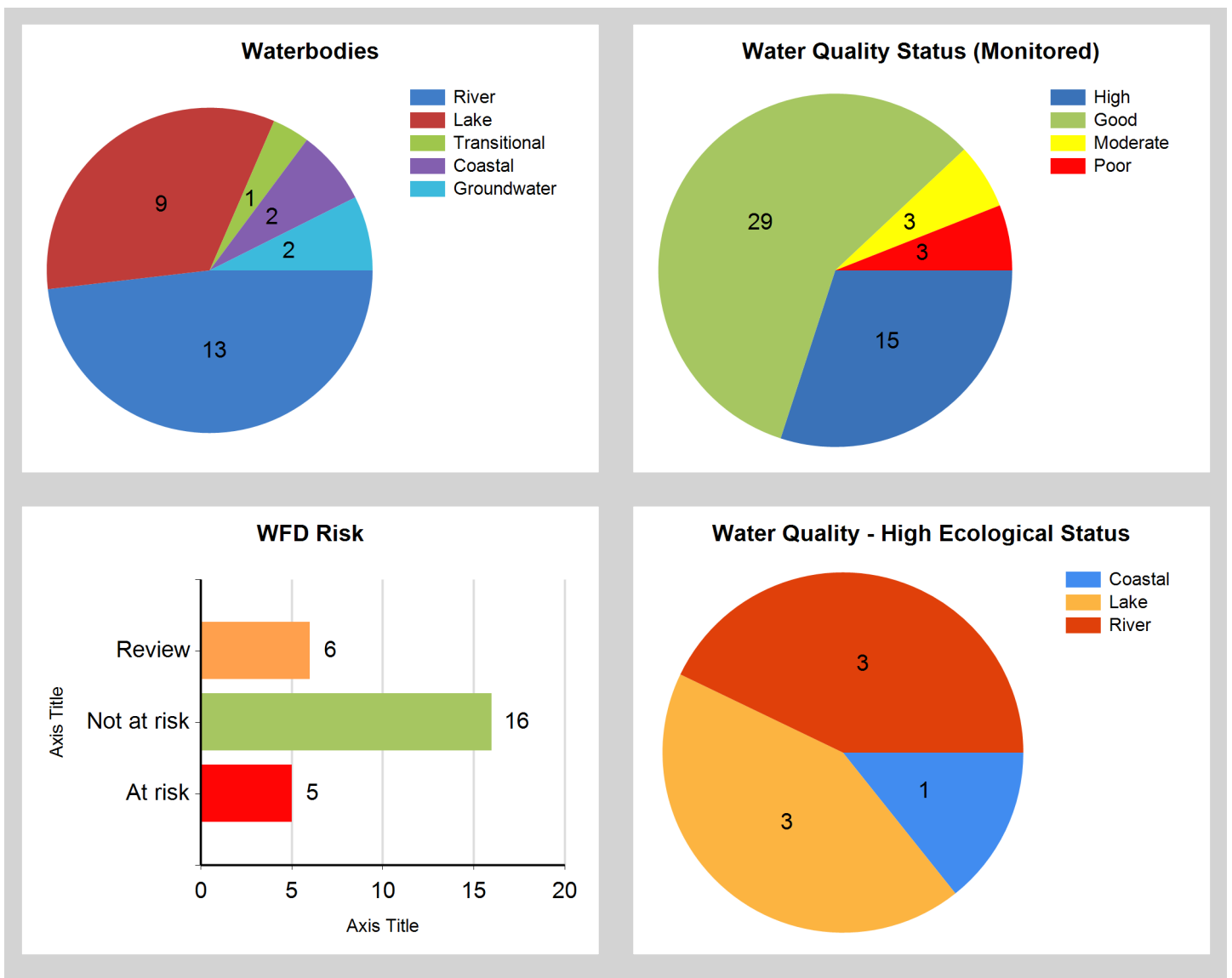
© Ordnance Survey Ireland. All rights reserved. Licence Number EN 0059208

Generated on: 16 Jan 2019

Assessment Purpose

This assessment has been produced as part of the national characterisation programme undertaken for the second cycle of Water Framework Directive river basin management planning. It has been led by the EPA, with input from Local Authorities and other public bodies, and with support from RPS consultants.

The characterisation assessments are automatically generated from the information stored in the WFD Application. They are based on information available to the end of 2015 but may be subject to change until the final 2018-21 river basin management plan is published. Users should ensure that they have the most up to date information by downloading the latest assessment before use.



Evaluation of Priority Subcatchment Issues

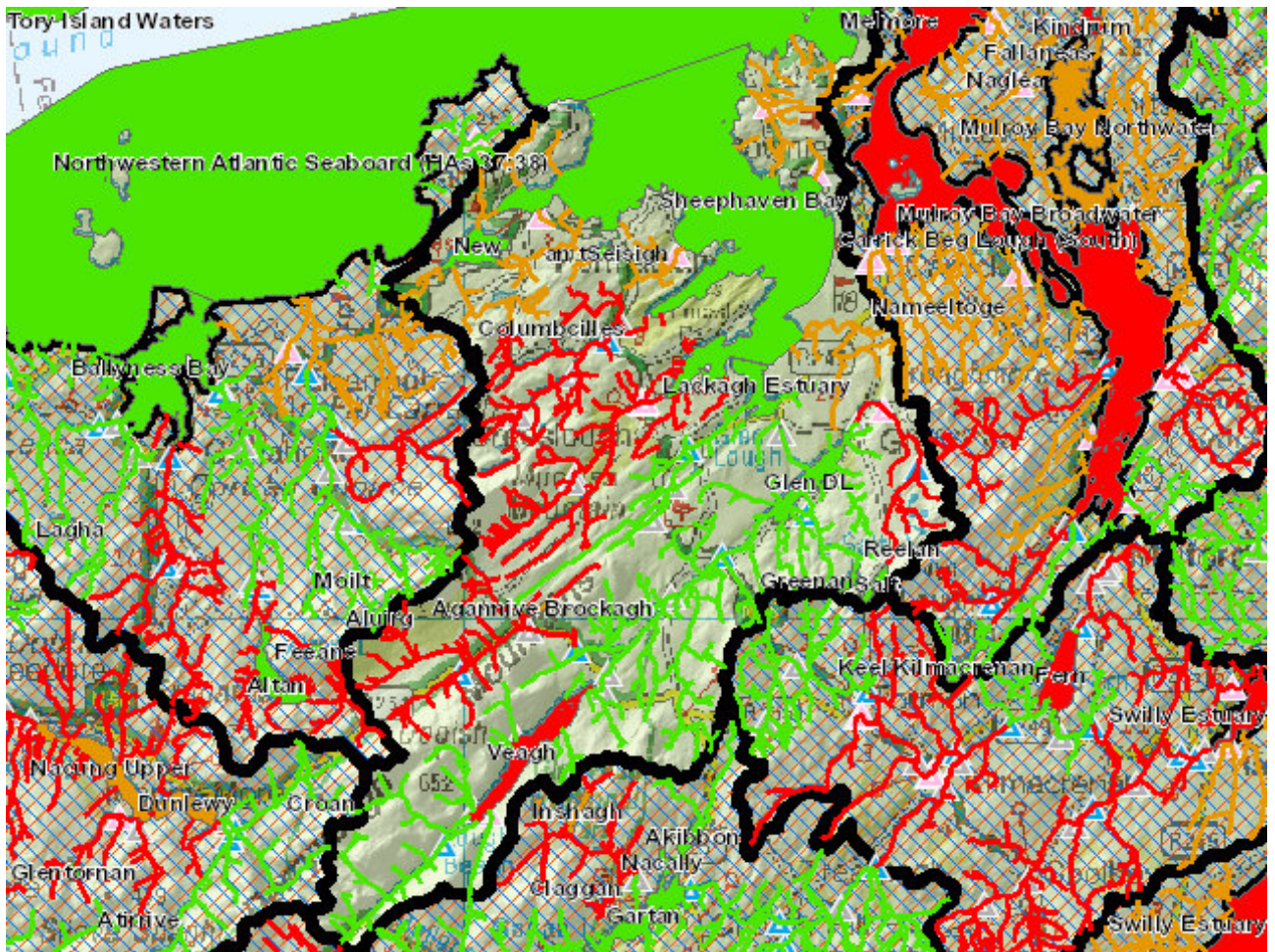
The main pathway here is overland flow for phosphate and this is a potential issue for the area of the northern section of the subcatchment around Sheephaven Bay. This is a coastal catchment consists of many short coastal streams which experience elevated topography from Slievetoohy before a short, steep, spatey run before discharging to coast. The natural hydromorphology issues associated with such topography and high rainfall contribute to sedimentation. Upland grazing may also increase the mobility of sediment and surface run-off and toxic effects possibly owing to the use of cypermethrin as sheep dip have been noted in the subcatchment.

Four of the nine monitored river water bodies in this subcatchment were of less than Good ecological status (driven by invertebrate monitoring data) in 2013-2015 monitoring cycle. These water bodies, Faymore_010, Calabber_010, Carrownamaddy_010 and Glen (Lackagh)_ are AT RISK with domestic waste water treatment (septic tanks), quarries, hydromorphology and agriculture identified as the significant pressures. Three river water bodies have High Ecological Status objectives, Owenveagh_010, Owenwee (Glen Lough)_010 and Owencarrow_020, all of which met this requirement during the 2013-2015 monitoring cycle.

Five of the nine lake water bodies in the subcatchment have ecological data and chemistry data available. Ecological status at these five lakes for 2013-2015 resulted in all being at least Good status with Greenan being of High status. Lough Veagh has a High Ecological Status objective assigned to it and is AT RISK as it is not meeting its objective, abstraction may be impacting status but a local catchment assessment will be required to assess this and other possible pressures.

The remaining water bodies in the subcatchment, four rivers and four lakes, were not monitored. All of the four unmonitored are in REVIEW with possible impacting pressures of mainly septic tanks with some agriculture. All four unmonitored lake water bodies deemed NOT AT RISK due to the lack of identifiable pressures in the vicinity of the lake.

Map Subcatchment Risk Map

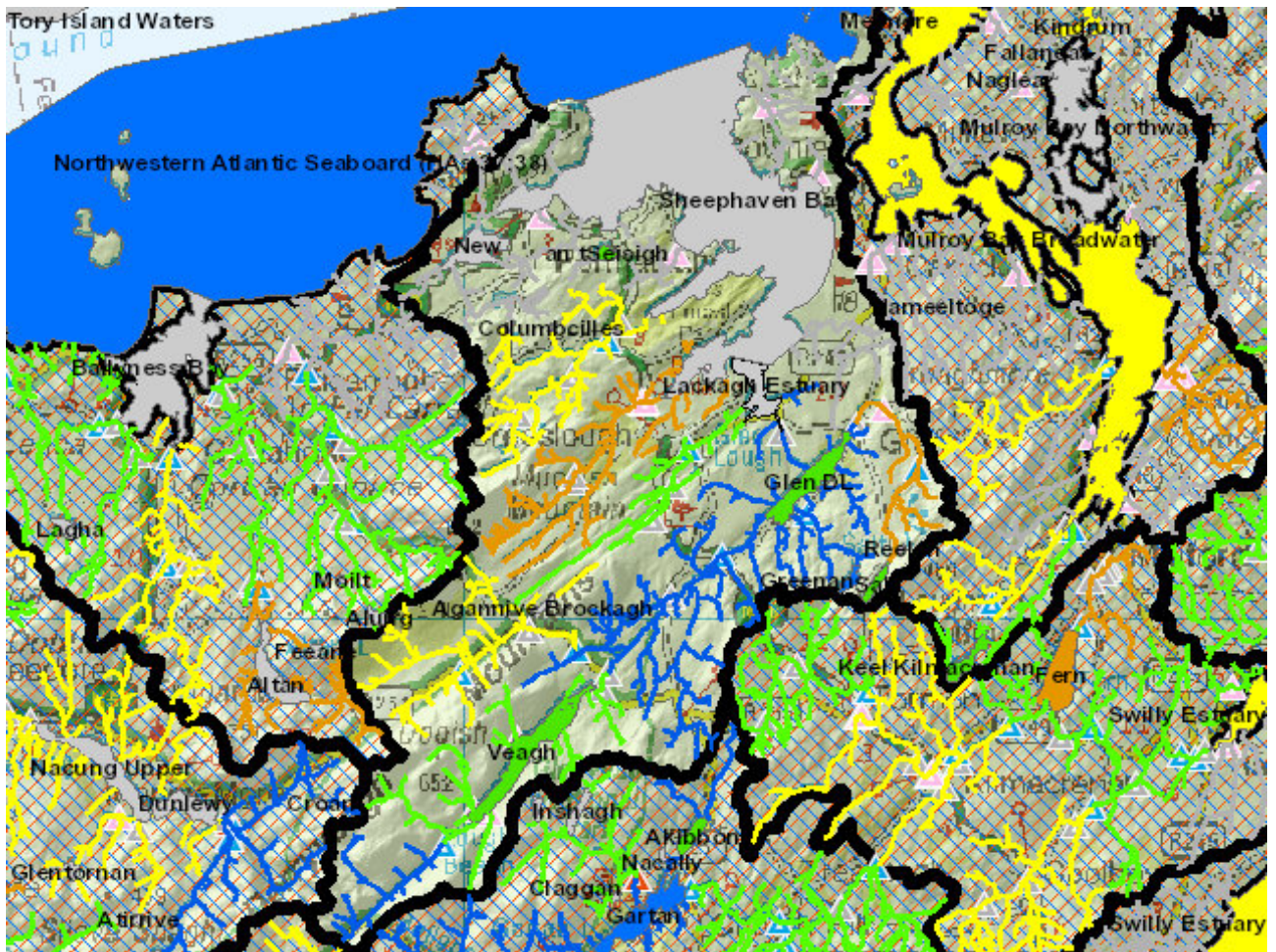


River And Lake Waterbodies: WFD Risk

The following river and lake waterbodies are in the subcatchment.

Code	Name	Type	WFD Risk	Significant Pressure
IE_NW_38_693	Veagh	Lake	At risk	Yes
IE_NW_38C010300	CALABBER_010	River	At risk	Yes
IE_NW_38C020300	CARROWNAMADDY_010	River	At risk	Yes
IE_NW_38F010200	FAYMORE_010	River	At risk	Yes
IE_NW_38G040900	GLEN (LACKAGH)_010	River	At risk	Yes
IE_NW_38D240730	DOIRE_CHASÁIN_010	River	Review	Yes
IE_NW_38D500770	DUNFANAGHY_010	River	Review	Yes
IE_NW_38R050930	ROCKHILL (Donegal)_010	River	Review	Yes
IE_NW_38R090870	ROSEPENNA_010	River	Review	Yes
IE_NW_38_31	New	Lake	Not at risk	No
IE_NW_38O030300	OWENCARROW_020	River	Not at risk	No

Map Subcatchment Water Quality Status Map



River And Lake Waterbodies: Water Quality Status

The water quality status of river and lake waterbodies in the subcatchment is as follows.

Code	Name	Type	2007-09	2010-12	2010-15
IE_NW_38_665	Agannive Brockagh	Lake	High	Unassigned	Unassigned
IE_NW_38_61	an tSeisigh	Lake	Good	Good	Good
IE_NW_38C010300	CALABBER_010	River	Good	Good	Moderate
IE_NW_38C020300	CARROWNAMADDY_010	River	Good	Good	Moderate
IE_NW_38_232	Columbcilles	Lake	Unassigned	Unassigned	Unassigned
IE_NW_38D240730	DOIRE_CHASÁIN_010	River	Unassigned	Unassigned	Unassigned
IE_NW_38D500770	DUNFANAGHY_010	River	Unassigned	Unassigned	Unassigned
IE_NW_38D030500	DUNTALLY_010	River	Good	Good	Good
IE_NW_38F010200	FAYMORE_010	River	Moderate	Good	Poor
IE_NW_38G040900	GLEN (LACKAGH)_010	River	Good	Poor	Poor
IE_NW_38_22	Glen DL	Lake	Good	Good	Good
IE_NW_38_635	Greenan	Lake	High	High	High
IE_NW_38_31	New	Lake	Unassigned	Unassigned	Unassigned
IE_NW_38O030150	OWENCARROW_010	River	Good	Good	Good
IE_NW_38O030300	OWENCARROW_020	River	High	Unassigned	High
IE_NW_38O140080	OWENVEAGH_010	River	High	High	High
IE_NW_38O130100	OWENWEE (GLEN LOUGH)_010	River	Good	High	High
IE_NW_38_514	Reelan	Lake	Good	Unassigned	Unassigned
IE_NW_38R050930	ROCKHILL (Donegal)_010	River	Unassigned	Unassigned	Unassigned
IE_NW_38R090870	ROSEPENNA_010	River	Unassigned	Unassigned	Unassigned
IE_NW_38_649	Salt	Lake	Good	High	Good
IE_NW_38_693	Veagh	Lake	High	Good	Good

Potentially Dependent Transitional and Coastal Waterbodies

The Transitional and Coastal waterbodies listed below intersect spatially with river and lake waterbodies in the subcatchment ...

Code	Name	Type	Local Authority	WFD Risk
IE_NW_100_0000	Northwestern Atlantic Seaboard (HAs 37;38)	Coastal	Donegal County Council	Not at risk
IE_NW_190_0000	Sheephaven Bay	Coastal	Donegal County Council	Not at risk
IE_NW_190_0100	Lackagh Estuary	Transitional	Donegal County Council	Not at risk

Potentially Dependent Groundwater Waterbodies

The groundwaters listed below intersect spatially with river and lake waterbodies in the subcatchment ...

Code	Name	Type	Local Authority	WFD Risk
IE_NW_G_049	Northwest Donegal	Groundwater	Donegal County Council	Review
IEGBNI_NW_G_059	Lough Swilly	Groundwater	Donegal County Council	Not at risk

Protected Areas intersecting River and Lake Waterbodies

The Protected Areas listed below intersect spatially with river and lake waterbodies in the subcatchment ...

Code	Name	Type	Waterbody Name	Association Type
IE0000147	Horn Head And Rinclevan SAC	SAC	DUNFANAGHY_010	Overlapping / partly within Protected Area
IE0000147	Horn Head And Rinclevan SAC	SAC	New	Overlapping / partly within Protected Area
IE0000194	Tranarossan And Melmore Lough SAC	SAC	DOIRE_CHASÁIN_010	Overlapping / partly within Protected Area
IE0001190	Sheephaven SAC	SAC	ROCKHILL (Donegal)_010	Overlapping / partly within Protected Area
IE0001190	Sheephaven SAC	SAC	ROSEPENNA_010	Overlapping / partly within Protected Area
IE0001190	Sheephaven SAC	SAC	FAYMORE_010	Overlapping / partly within Protected Area
IE0001190	Sheephaven SAC	SAC	CARROWNAMADDY_010	Overlapping / partly within Protected Area
IEPA1_NW_38_635	Greenan	Drinking Water	Greenan	Within Protected Area
IEPA1_NW_38_649	Salt	Drinking Water	Salt	Within Protected Area
IEPA1_NW_38_693	Veagh	Drinking Water	Veagh	Within Protected Area
IEPA1_NW_38C020300	CARROWNAMADDY_010	Drinking Water	CARROWNAMADDY_010	Within Protected Area
IEPA1_NW_38O030150	OWENCARROW_010	Drinking Water	OWENCARROW_010	Within Protected Area
IEPA2_0041	Sheephaven	Shellfish Area	ROSEPENNA_010	Overlapping / partly within Protected Area

Pressures

Below is a list of all significant pressures identified in the subcatchment.

Code	Name	WFD Risk	Pressure Category	Pressure Sub Category
IE_NW_38_693	Veagh	At risk	Abstractions	Water supply
IE_NW_38C010300	CALABBER_010	At risk	Hydromorphology	Embankments
IE_NW_38C020300	CARROWNAMADDY_010	At risk	Extractive Industry	Quarries
IE_NW_38F010200	FAYMORE_010	At risk	Urban Waste Water	Agglomeration PE of 500 to 1,000
IE_NW_38F010200	FAYMORE_010	At risk	Domestic Waste Water	Waste Water discharge
IE_NW_38F010200	FAYMORE_010	At risk	Agriculture	Pasture
IE_NW_38G040900	GLEN (LACKAGH)_010	At risk	Agriculture	Farmyards
IE_NW_38D240730	DOIRE_CHASÁIN_010	Review	Domestic Waste Water	Waste Water discharge
IE_NW_38D500770	DUNFANAGHY_010	Review	Domestic Waste Water	Waste Water discharge
IE_NW_38R050930	ROCKHILL (Donegal)_010	Review	Domestic Waste Water	Waste Water discharge
IE_NW_38R090870	ROSEPENNA_010	Review	Agriculture	Pasture
IE_NW_38R090870	ROSEPENNA_010	Review	Domestic Waste Water	Waste Water discharge
IE_NW_G_049	Northwest Donegal	Review	Anthropogenic Pressures	Unknown

Further Characterisation Actions

The following further characterisation actions have been identified. These are necessary to help understand more fully issues in the subcatchment and their likely cause.

Code	Name	Action	Responsible Organisation
IE_NW_38D500770	DUNFANAGHY_010	IA3 Determination of Water Quality (unassigned waterbody)	Donegal County Council
IE_NW_38R090870	ROSEPENNA_010	IA3 Determination of Water Quality (unassigned waterbody)	Donegal County Council
IE_NW_38D240730	DOIRE_CHASÁIN_010	IA3 Determination of Water Quality (unassigned waterbody)	Donegal County Council
IE_NW_38R050930	ROCKHILL (Donegal)_010	IA1 Provision of Information	Donegal County Council
IE_NW_38_693	Veagh	IA8 High status RWB pressures	Environmental Protection Agency
IE_NW_38F010200	FAYMORE_010	IA4 Regulated Point Sources	Donegal County Council
IE_NW_38_665	Agannive Brockagh	IA1 Provision of Information	Environmental Protection Agency
IE_NW_38C020300	CARROWNAMADDY_010	IA5 Multiple Sources in defined rural area (1km) or waterbody or rural town	Donegal County Council
IE_NW_38_693	Veagh	IA1 Provision of Information	Inland Fisheries Ireland
IE_NW_38G040900	GLEN (LACKAGH)_010	IA5 Multiple Sources in defined rural area (1km) or waterbody or rural town	Donegal County Council
IE_NW_38C010300	CALABBER_010	IA3 Determination of Water Quality (unassigned waterbody)	Donegal County Council