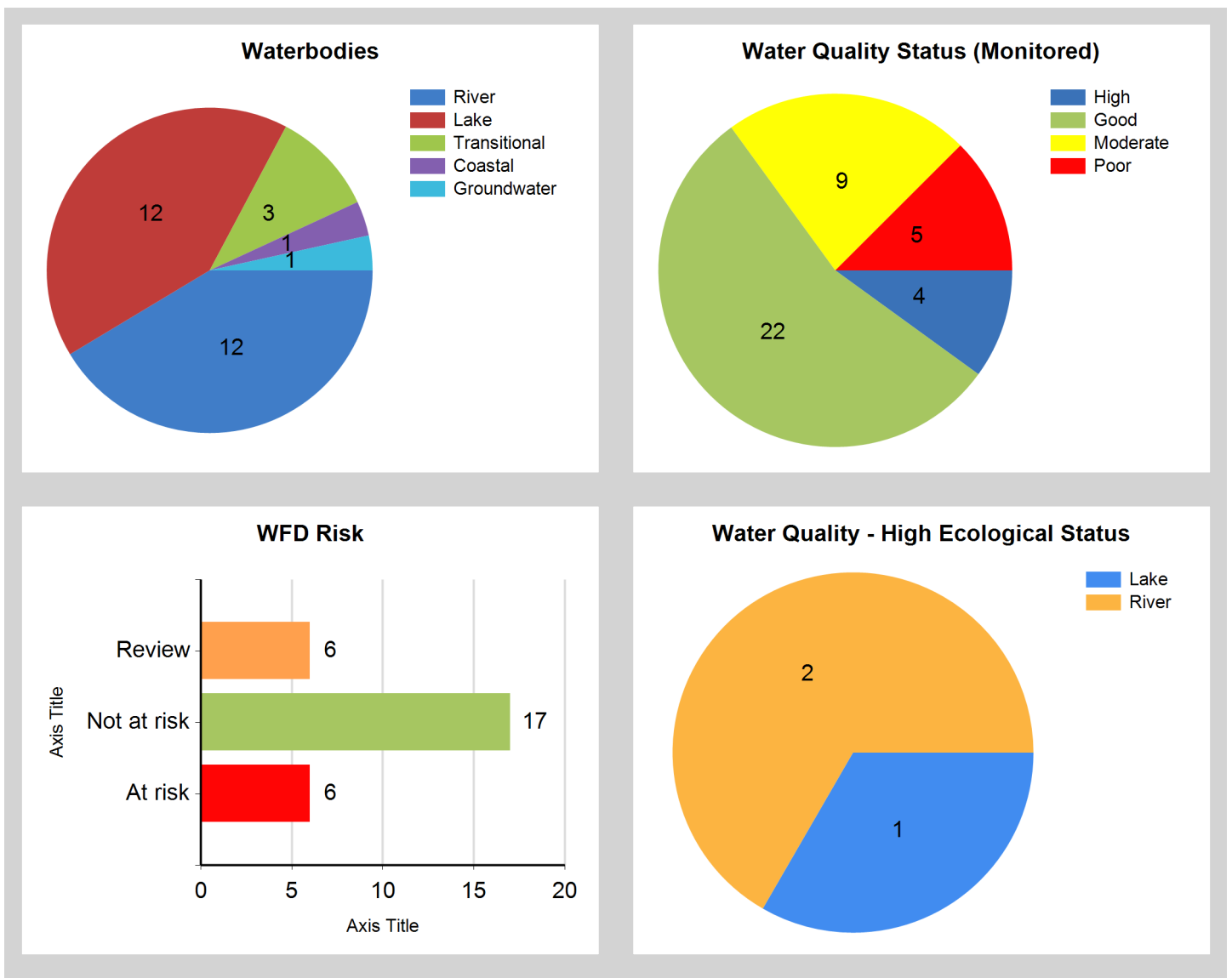


Assessment Purpose

This assessment has been produced as part of the national characterisation programme undertaken for the second cycle of Water Framework Directive river basin management planning. It has been led by the EPA, with input from Local Authorities and other public bodies, and with support from RPS consultants.

The characterisation assessments are automatically generated from the information stored in the WFD Application. They are based on information available to the end of 2015 but may be subject to change until the final 2018-21 river basin management plan is published. Users should ensure that they have the most up to date information by downloading the latest assessment before use.



Evaluation of Priority Subcatchment Issues

There are two High Ecological Status river water bodies in the subcatchment, Cronaniv Burn_010 and Devlin (Donegal)_010 both of which are NOT AT RISK as they both met this objective in 2013-2015. There is also one High Status Objective lake, Anure which is AT RISK due to its continuing Good ecological Status in 2013-2015 monitoring cycle so further investigation required

Organic pollution and/or morphological changes from the effects of siltation from Peat, which covers a significant portion of the subcatchment, may be a contributing factor, along with quarrying activities, in the Status being less than Good in Corveen_010, therefore causing it to be AT RISK. Quarrying, along with septic tanks, is also identified as a significant pressure in Catheen_010. Agriculture is not considered to be a priority subcatchment issue due to a low PIP Ranking and the fact that the land cover is dominated by Peat.

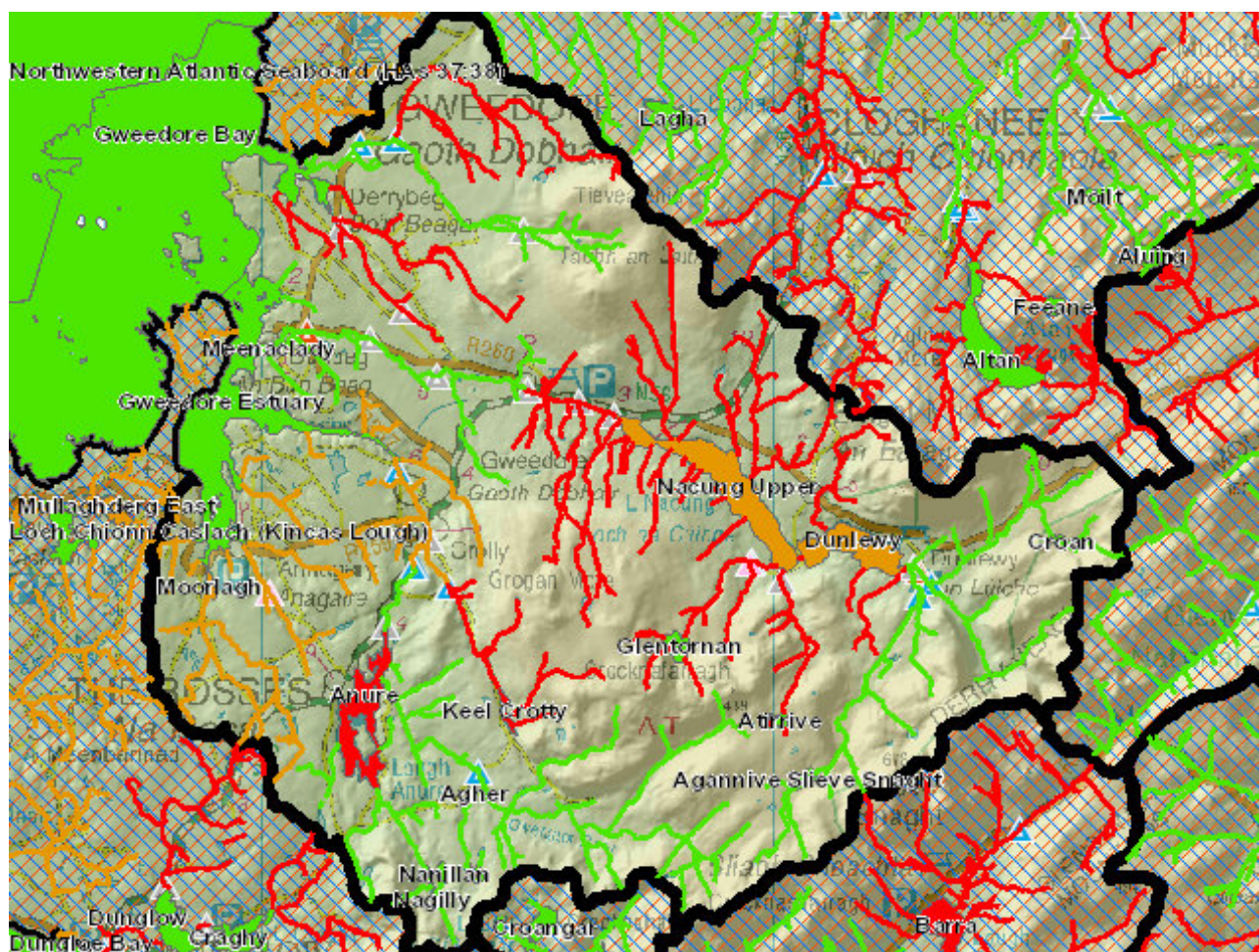
Point Sources discharges are not considered significant from a subcatchment perspective, however, two section 4 licences, and 2 COAs (discharge to ground) are located adjacent to Catheen_010, and warrant further investigation. The EPA Biologists flagged WTP discharges as a suspected cause of pollution in Keel Lough Stream_010. WTP discharges can have a very high suspended solids content, which may be a contributing factor in the heavy siltation noted by the EPA Biologists in this water body in 2012, this as confirmed following discussions with Donegal County Council. Abstraction volumes on Keel Crolly lake have also been identified as a pressure that requires further investigation.

However it is not meeting its HES objective .

Septic tanks from huge numbers of one-off housing is predominant significant pressure in certain popular areas, such as Rinnarfest, Bunbeg and Derrybeg.

Two unassigned Lakes, Dunlewy and Nacung Upper are highly modified water bodies.

Map Subcatchment Risk Map



River And Lake Waterbodies: WFD Risk

The following river and lake waterbodies are in the subcatchment.

Code	Name	Type	WFD Risk	Significant Pressure
IE_NW_38_576	Keel Crotty	Lake	At risk	Yes
IE_NW_38_83	Anure	Lake	At risk	Yes
IE_NW_38C030200	CATHEEN_010	River	At risk	Yes
IE_NW_38C040150	CLADY (DONEGAL)_010	River	At risk	Yes
IE_NW_38C050200	CORVEEN_010	River	At risk	Yes
IE_NW_38K010200	KEEL LOUGH STREAM_010	River	At risk	Yes
IE_NW_38_683	Dunlewy	Lake	Review	No
IE_NW_38G030300	GWEEDORE_020	River	Review	Yes
IE_NW_38L150630	LOUGHANURE_010	River	Review	Yes

River And Lake Waterbodies: Water Quality Status

The water quality status of river and lake waterbodies in the subcatchment is as follows.

Code	Name	Type	2007-09	2010-12	2010-15
IE_NW_38_565	Agannive Slieve Snaght	Lake	Unassigned	Unassigned	Unassigned
IE_NW_38_613	Agher	Lake	Unassigned	Unassigned	Unassigned
IE_NW_38_83	Anure	Lake	High	Good	Good
IE_NW_38_18	Atirrive	Lake	Unassigned	Unassigned	Unassigned
IE_NW_38C030200	CATHEEN_010	River	Unassigned	Poor	Poor
IE_NW_38C040150	CLADY (DONEGAL)_010	River	Moderate	Good	Moderate
IE_NW_38C040300	CLADY (DONEGAL)_020	River	Good	Good	Good
IE_NW_38C050200	CORVEEN_010	River	Moderate	Moderate	Moderate
IE_NW_38_661	Croan	Lake	Unassigned	Unassigned	Unassigned
IE_NW_38C060100	CRONANIV BURN_010	River	Good	Good	High
IE_NW_38D010080	DEVLIN (DONEGAL)_010	River	High	Good	High
IE_NW_38_683	Dunlewy	Lake	Unassigned	Unassigned	Unassigned
IE_NW_38_546	Glentoran	Lake	Unassigned	Unassigned	Unassigned
IE_NW_38G030100	GWEEDORE_010	River	Moderate	Good	Good
IE_NW_38G030300	GWEEDORE_020	River	Moderate	Good	Good
IE_NW_38_576	Keel Crotty	Lake	Moderate	Good	Moderate
IE_NW_38K010200	KEEL LOUGH STREAM_010	River	Poor	Poor	Poor
IE_NW_38_612	Lack More	Lake	Unassigned	Unassigned	Unassigned
IE_NW_38L150630	LOUGHANURE_010	River	Unassigned	Unassigned	Unassigned
IE_NW_38_26	Nacung Upper	Lake	Unassigned	Unassigned	Unassigned
IE_NW_38_477	Nagilly	Lake	Unassigned	Unassigned	Unassigned
IE_NW_38_493	Nanillan	Lake	Unassigned	Unassigned	Unassigned
IE_NW_38O010100	OWENATOR_010	River	Good	Good	Good
IE_NW_38O090300	OWENCRONAHULLA_010	River	Good	Good	Good

Potentially Dependent Transitional and Coastal Waterbodies

The Transitional and Coastal waterbodies listed below intersect spatially with river and lake waterbodies in the subcatchment ...

Code	Name	Type	Local Authority	WFD Risk
IE_NW_160_0000	Gweedore Bay	Coastal	Donegal County Council	Not at risk
IE_NW_160_0200	Gweedore Estuary	Transitional	Donegal County Council	Not at risk
IE_NW_160_0300	Moorlagh	Transitional	Donegal County Council	Review
IE_NW_160_0500	Meenaclady	Transitional	Donegal County Council	Not at risk

Potentially Dependent Groundwater Waterbodies

The groundwaters listed below intersect spatially with river and lake waterbodies in the subcatchment ...

Code	Name	Type	Local Authority	WFD Risk
IE_NW_G_049	Northwest Donegal	Groundwater	Donegal County Council	Review

Protected Areas intersecting River and Lake Waterbodies

The Protected Areas listed below intersect spatially with river and lake waterbodies in the subcatchment ...

Code	Name	Type	Waterbody Name	Association Type
IE0001141	Gweedore Bay And Islands SAC	SAC	GWEEODORE_020	Overlapping / partly within Protected Area
IE0001141	Gweedore Bay And Islands SAC	SAC	LOUGHANURE_010	Overlapping / partly within Protected Area
IE0001141	Gweedore Bay And Islands SAC	SAC	OWENCRONAHULLA_010	Overlapping / partly within Protected Area
IE0001141	Gweedore Bay And Islands SAC	SAC	CATHEEN_010	Overlapping / partly within Protected Area
IE0001141	Gweedore Bay And Islands SAC	SAC	CLADY (DONEGAL)_020	Overlapping / partly within Protected Area
IEPA1_NW_38_576	Keel Crotty	Drinking Water	Keel Crotty	Within Protected Area
IEPA2_0040	Gweedore Bay	Shellfish Area	CLADY (DONEGAL)_020	Overlapping / partly within Protected Area

Pressures

Below is a list of all significant pressures identified in the subcatchment.

Code	Name	WFD Risk	Pressure Category	Pressure Sub Category
IE_NW_38_576	Keel Crotty	At risk	Abstractions	Water supply
IE_NW_38_83	Anure	At risk	Urban Waste Water	Agglomeration PE < 500
IE_NW_38_83	Anure	At risk	Domestic Waste Water	Waste Water discharge
IE_NW_38C030200	CATHEEN_010	At risk	Urban Waste Water	Agglomeration PE < 500
IE_NW_38C030200	CATHEEN_010	At risk	Domestic Waste Water	Waste Water discharge
IE_NW_38C030200	CATHEEN_010	At risk	Extractive Industry	Quarries
IE_NW_38C030200	CATHEEN_010	At risk	Urban Run-off	Diffuse Sources Run-Off
IE_NW_38C040150	CLADY (DONEGAL)_010	At risk	Forestry	Forestry
IE_NW_38C050200	CORVEEN_010	At risk	Extractive Industry	Quarries
IE_NW_38C050200	CORVEEN_010	At risk	Extractive Industry	Peat
IE_NW_38K010200	KEEL LOUGH STREAM_010	At risk	Water Treatment	Discharges
IE_NW_160_0300	Moorlagh	Review	Anthropogenic Pressures	Unknown
IE_NW_38G030300	GWEEDORE_020	Review	Industry	Section 4
IE_NW_38G030300	GWEEDORE_020	Review	Hydromorphology	Dams, barriers, locks, weirs
IE_NW_38L150630	LOUGHANURE_010	Review	Domestic Waste Water	Waste Water discharge
IE_NW_G_049	Northwest Donegal	Review	Anthropogenic Pressures	Unknown

Further Characterisation Actions

The following further characterisation actions have been identified. These are necessary to help understand more fully issues in the subcatchment and their likely cause.

Code	Name	Action	Responsible Organisation
IE_NW_38G030300	GWEEDORE_020	IA1 Provision of Information	Environmental Protection Agency
IE_NW_38C030200	CATHEEN_010	IA5 Multiple Sources in defined rural area (1km) or waterbody or rural town	Donegal County Council
IE_NW_38_683	Dunlewy	IA1 Provision of Information	Donegal County Council
IE_NW_38L150630	LOUGHANURE_010	IA1 Provision of Information	Environmental Protection Agency
IE_NW_38C030200	CATHEEN_010	IA1 Provision of Information	Donegal County Council
IE_NW_38_26	Nacung Upper	IA1 Provision of Information	Donegal County Council
IE_NW_38C050200	CORVEEN_010	IA7 Multiple Sources in Multiple Areas	Donegal County Council
IE_NW_38_576	Keel Crotty	IA1 Provision of Information	Environmental Protection Agency
IE_NW_38C030200	CATHEEN_010	IA6 Multiple Sources in Large Urban Area	Donegal County Council
IE_NW_38C030200	CATHEEN_010	IA1 Provision of Information	Irish Water
IE_NW_38_83	Anure	IA8 High status RWB pressures	Donegal County Council
IE_NW_38_576	Keel Crotty	IA1 Provision of Information	Environmental Protection Agency
IE_NW_38C040150	CLADY (DONEGAL)_010	IA5 Multiple Sources in defined rural area (1km) or waterbody or rural town	Donegal County Council
IE_NW_38_576	Keel Crotty	IA1 Provision of Information	Irish Water
IE_NW_38K010200	KEEL LOUGH STREAM_010	IA1 Provision of Information	Irish Water
IE_NW_38_83	Anure	IA1 Provision of Information	Environmental Protection Agency